

Blair-Athol Haroldsons & Friends

Mil-Wray Polled Herefords ~ Roselawn Polled Herefords ~ Til-Toba Polled Herefords

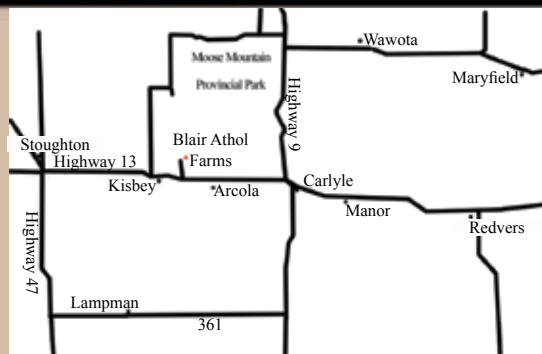


OCTOBER 20, 2013
1 PM - ARCOLA, SK

BLAIR-ATHOL HAROLDSONS

Friends

1:00 p.m. SUNDAY, OCTOBER 20, 2013
AT THE FARM, ARCOLA, SK



BLAIR ATHOL



Blair Athol Farms
The Lees Family
Box 386, Arcola, SK S0C 0G0
blairatholfarms@sasktel.net
www.blairatholfarms.com

Duncan & Val
Ph/fax: 306-455-2619
Cell: 306-577-9703
Jeff, Grace, Christin, Kylee,
Jackson & Hannah
Ph: 306-455-2128
Cell: 306-577-1375

4 miles west of Arcola,
3 miles north on RR #2052
4 miles east of Kisbey,
3 miles north on RR #2052

HAROLDSON'S



Jarrett
Ph: 306-891-9719

Haroldson's Polled Herefords
Lenna, Kristy, Chad Wilson
Box 372, Wawota, SK S0G 5A0
Ph: 306-739-2643 Fax: 306-739-2902
Cell: 306-577-1256
chad_wilson79@hotmail.com
www.haroldsons.com

MIL-WRAY



Mil-Wray Polled Herefords
Don & Wanda Wray & Family
Box 75, Tilston, MB ROM 2B0
Ph: 204-686-2295
Email: milwray@hotmail.com

ROSELAWN



Roselawn Polled Herefords
Wally & Jackie Mitchell & Family
Box 782, Killarney, MB R0K 1G0
Ph: 204-523-8713
C: 204-534-8204
Fax: 204-523-5668
Email: jmitchell@goinet.ca

TIL-TOBA



Til-Toba Polled Herefords
Ken & Judy Wray & Family
Box 65, Tilston, MB ROM 2B0
Ph/fax: 204-686-2289
Cell: 204-522-6117
Email: tiltoba@yahoo.com

BE A PART OF THE SASKATCHEWAN SWEEP "STEAKS"

Friday, October 18 – Meadow Acres Farms Complete Polled Hereford Dispersal – 1:00 p.m.
Saturday, October 19 – ANL Polled Herefords & Guests Sale – 1:00 p.m.
Saturday, October 19 – C & T "Take The Next Step" Sale – 5:00 p.m.
Sunday, October 20 – Blair-Athol/Haroldson's & Friends – 1:00 p.m.
Monday, October 21 – Square-D Annual Production Sale – 1:00 p.m.

THE WINTERING & JUNIOR PROGRAM

Why not let us look after your bull calf purchase until spring of 2014 for a fee of \$400.00. Juniors wishing to leave Bonanza 2014 purchases...make arrangements with the consignors. We'll make sure the deal will be very good! We do require that you purchase insurance for full value and that payment for bull wintering is done at the time of settlement.



VIEW THE CATALOGUE ONLINE AT www.buyagro.com

From T Bars' desk ...

After a "barn-burner" in the new sale facility last October, the barn has survived and is ready for the 2013 event. Jeff has been busy expanding the program in all areas and I'm quite sure that Duncan is tired of putting up hay. After a very successful exhibition at Bonanza in Brandon, your hosts and their friends are gearing up for October 20th with a powerful offering of Polled Hereford breeding stock. For those who attend, you will have the opportunity of meeting one of Manitoba's leading money winners in golf for 2013.

Blair-Athol/Haroldson's offers the largest group of selected bred yearling heifers in Canada. Many carry early services to the industry's leading sires and while they are selected from four diverse breeding operations, the strength of the offering is amazing. As in the past, there are opportunities for all programs and more importantly, all budgets. The results of purchases throughout the past years have yielded a host of front pasture brood matrons throughout North America.

For those who are looking for 2013 heifer calves to exhibit, whether you are a teenager or an over-the-hill junior, look no further. If you have attended major competitions or read about them, you will quickly find that these operations have supplied the industry with some of the most competitive seed stock available. 2013 offers (by far) the best lineup of show prospects assembled in this sale and foremost is the diversity of phenotypes with great numbers.

The "Sweep Steaks" weekend is an exciting time in the Hereford industry. It combines a mixing of Canadians from various provinces, as well as rubbing shoulders with our neighbors south of the 49th parallel. This weekend offers great cattle that will forge new paths for years to follow and a warm "down-home" hospitality for all who attend. As we watch this rising market, few realize that 2013 might well be the last opportunity for some time, to purchase affordable replacement stock.

On behalf of the Lees, Wilsons, Wrays and Mitchells, this is your special invitation to be a part of another day of history in October.

If we, at T Bar C, may be of assistance, prior to or sale day, do not hesitate to give Chris, Shane or myself a call.

See you at Duncan's
Ted



Sale Management



SALE BROADCAST LIVE BY:



WWW.CATTLEINMOTION.COM

Watch & Bid Live

For more information contact
Sarah Buchanan 519-546-3352
sarah@cattleinmotion.com

Sale Day Phones

Ted's cell 306-221-2711
Chris' cell 306-220-5006

Sale Staff

Auctioneers:
Dale Stith 918-760-1550
Chris Poley 306-220-5006
Ringside:
Ted Serhienko, T Bar C Cattle Co. Ltd 306-221-2711
Shane Michelson, T Bar C Cattle Co. Ltd 403-363-9973
Levi Landers, American Hereford Assoc. 308-730-1396
Craig Flewelling, Flewelling Cattle Co. 403-556-0515
Consultants:
Marc Hotchkiss, Hereford America 605-490-1513
Joe Palsson 613-897-3417
Brad Dubeau, Canadian Hereford Digest 403-512-2235

Trucking

H.S. Knill
877-422-3106

Insurance:

Alameda Agencies LTD
Bonnie Thompson
306-489-2258

Sale Representatives

Canadian Hereford Association
Burt Grundy, President
Daryl Kirton, Vice President
Gordon Stephenson, General Manager

Saskatchewan Hereford Association
Doug Mann, President
Dale Shillington, Vice President
Marilyn Charlton, General Manager

Manitoba Hereford Association
Brent Blaine, President
Andrew Kopeechuk, Vice President
Kailey Penner, Secretary Manager

Hotel Accommodations

Bear Claw Casino & Hotel, Carlyle, SK (Sale Headquarters) 306-577-4588
Days Inn, Estevan, SK 306-634-6456
Perfect Inn & Suites, Estevan, SK 306-634-8585
Kenosee Inn, Kenosee, SK 306-577-2099
Ramada, Carlyle, SK 866-654-7128 or 306-453-2686
Western Star Inns & Suites, Carlyle, SK 306-453-2700
Chaparral Inn, Arcola, SK 306-455-2275
Poplar Tree Inn, Stoughton, SK 306-457-3540
Western Star Inn & Suites, Stoughton, SK 306-457-3000
*Please call directly to the accommodation of your choice.

REMEMBER ACCOMMODATIONS ARE AT A
PREMIUM – SO BOOK EARLY!

PLEASE JOIN US FOR LUNCH SALE DAY!

PLEASE BRING THIS CATALOGUE WITH YOU TO THE SALE

Honey Boo Boo 19A



LOT 1

Blair-Athol *Honey Boo Boo* 19A

FEMALE PC02984131 DVL 19A Feb 17, 2013

LOT 2

Blair-Athol *High Falutin* 117A

FEMALE PC02984124 DVL 117A Apr 13, 2013

BLAIR-ATHOL 20 THE ROCK ET 19M
P C02816335

REMITALL KEYNOTE 20X
MHR 35A HAZEL 54A 18D

SQUARE-D PLAINSMAN 946Y
DLF IEF HYF P C02958214

SQUARE-D RANCHMAN 257R DLF IEF HYF
SQUARE-D JAEDEN 846U DLF IEF HYF

BLAIR-ATHOL NASDAQ DEB ET 35W
P C02930324

PW MOHICAN NASDAQ P316
RU 8G LAST 41L

WSF LADY ONSTAR 829
P C02941734

MC RANGER 9615
WSF STAR LADY 653

CE: -2.2 BW: 5.4 WW: 57.3 YW: 92.8 MM: 18.6 TM: 47.3

CE: -3.3 BW: 5.9 WW: 49.2 YW: 78.9 MM: 21.4 TM: 46.0

BW: 94 lbs.

BW: 95 lbs.

T bar's pick and he is definitely not alone, Honey Boo Boo is one of the best heifer calves we have ever sold. Tremendous depth and thickness, with enough femininity to turn into real cow power. Both sire and dam are the results of embryos and we flushed her dam (35W) this past spring . . . a pretty good indication of what we think of 19A's genetic makeup.

Entered in Agribition.

Our youngest heifer and she just may be the best one! Dark colored, big red eyes, lots of length and depth, tied together with a fantastic hip structure. To complete this sweet little package, she comes with a beautiful long neck and is really clean fronted. Her dam is an MC Ranger daughter Ted picked for us out of the Wooden Shoe herd in Idaho. A maternal sister is working in the Polegi herd at Jedburgh, SK.

Entered in Agribition.

High Falutin 117A





LASHES 22A

LOT 3

Blair-Athol 118P *Lashes* 22A

FEMALE PC02984094 DVL 22A Feb 21, 2013

MHCvB 68M PROWLER 118P

P C02848089

STAR AMERICA BNMHPH SS MKS 68M DLF IEF HYF
DS 23C KATE 2K

RU 67N ROSIE 25R

P C02876074

RU 65F NEXT IN LINE 67N
RU 65F MAE 25N

CE: 0.1 BW: 5.0 WW: 47.0 YW: 75.4 MM: 23.0 TM: 46.5

BW: 90 lbs.

At times, I wish I didn't have to make a living in this business ... and could keep them all! Lashes 22A is so-o-o sexy ... red goggle eyed, deep ribbed, soft made and sweet fronted. She will look awesome when she gets ready to go to town. Her mother is really cool and has a flawless udder. We have two maternal sisters in the herd. Here's your chance to participate in a super female.

Entered in Agribition.

LOT 4

Blair-Athol 4T *Miranda* 95A

FEMALE PC02984108 DVL 95A APR 3, 2013

HAROLDSON'S WLL ANCHOR 4T

P C02909574

REMITALL GOVERNOR 236G

HAROLDSON'S 37H MIRA ET 62K

BLAIR-ATHOL 13 KISSES 17T

P C02900618

BLAIR-ATHOL 65F ON LINE 13K

BLAIR-ATHOL 36F KISSES 112P

CE: 0.9 BW: 3.8 WW: 47.8 YW: 80.9 MM: 19.6 TM: 43.6

BW: 97 lbs.

I think so much of these heifer calves that the further I go in writing footnotes, I realize how deep we are cutting in making this sale offering our best yet. 95A is sired by Haroldson's Anchor and out of our donor dam 17T. This is the fifth calf out of Gold Trophy dam, 17T; her first four calves all went to Agribition and I fully expect to take Miranda as well. This April baby has a little more frame and lots of length and broodiness.

Entered in Agribition.



MIRANDA 95A

Scrumptious 41A



LOT 5

Blair-Athol 70X *Scrumptious* 41A

FEMALE PC02984107 DVL 41A MAR 4, 2013

STAR MARKET INDEX 70X ET RVP STAR 533P CAN-AM ET 57U
DLF IEF HYF P C02965481 NJW 29M INVESTOR GAL 129R DLF IEF HYF

BLAIR-ATHOL 13K SALLY ANN 118S BLAIR-ATHOL 65F ON LINE 13K
P C02895698 WIN-DEL ANN 87J

CE: -0.9 BW: 4.3 WW: 53.6 YW: 83.9 MM: 18.1 TM: 44.9

BW: 98 lbs.

A very pretty daughter by Market Index with lots of style and a nice pattern ... nice fronted with lots of length, rib shape and color. A full sister sold last year to Danny Richards in North Dakota and Brooks Farms of Alameda have a maternal sister they think a lot of.

Hope 46A



LOT 6

Blair-Athol 161 *Hope* 46A

FEMALE PC02984091 DVL 46A MAR 6, 2013

REMITALL HEATER 161U BNMHPH 13P HEAT 101S DLF IEF HYF
DLF IEF HYF P C02909574 RU 2M DEBRA 141P

LAKEFORD FAITHFUL 882P LAKEFORD IMPRESSIVE 56M
DLF IEF HYF P C02847142 ANL 57G FAITH 88L

CE: -0.1 BW: 4.6 WW: 48.4 YW: 71.8 MM: 19.6 TM: 43.8

BW: 104 lbs.

Here's an opportunity to purchase a daughter out of Jeff's donor dam, 882P. Her progeny have averaged \$4440.00 on eight head and sold across North America. 46A is a sister to Shasta, the 2012 Red Coat Classic \$10,000.00 for Kate Webb. 882P is also the dam of Jazz 26Y, the herd sire we own in partnership with Arthur Farms ... and what a wonderful job he is doing! You need to take a trip to Tyler's place at Alida and see those calves; it will be worth your time.

Diana 85A



LOT 7

Blair-Athol 161 *Diana* 85A

FEMALE PC02984115 DVL 85A MAR 28, 2013

REMITALL HEATER 161U BNMHPH 13P HEAT 101S DLF IEF HYF
DLF IEF HYF P C02909574 RU 2M DEBRA 141P

BLAIR-ATHOL 103 DIANE 33U BLAIR-ATHOL BOND DIRECT 103P
P C02916114 BLAIR-ATHOL 122L DEE 13R

CE: 1.4 BW: 2.3 WW: 47.5 YW: 78.5 MM: 22.5 TM: 46.3

BW: 96 lbs.

Diana 85A is a real complete Heater daughter; thick, deep and structurally correct. She's a "can't miss" cow prospect and may get a chance to show as well. Give 85A more than one check mark ... she could be a sleeper.

LOT 8

Blair-Athol *Roxy Rolla* 8A

FEMALE PC02984140 DVL 8A Feb 8, 2013

REMITALL HEATER 161U BNMMPH 13P HEAT 101S DLF IEF HYF
DLF IEF HYF P C02909574 RU 2M DEBRA 141P

MEADOW-ACRES 72M ROXY 148W HAROLDSON WLB MUTUMBO ET 72M
P C02925839 QCB 169N ROXY 41R

CE: -0.9 BW: 4.8 WW: 55.3 YW: 87.8 MM: 17.9 TM: 45.6

BW: 94 lbs.

Roxy Rolla is a nice Heater daughter with extra frame and length. Her dam is a beautiful uddered, hard milking young cow that Jarrett purchased from Meadow Acres. The Heaters are turning out very well and 8A will be no exception.



Roxy Rolla 8A

LOT 9

Blair-Athol T *Pearl* 9A

FEMALE PC02984411 DVL 9A Feb 9, 2013

GLENLEES ECV 75R TONIC 89W GHC RATTLER 75R
DLF IEF HYF P C02927836 SQUARE-D PEARL 37M

JAC CONNIE ET 18X PW VICTOR BOOMER P606
DLF IEF HYF P C02946100 SHORTY-CROFT CONNIE 20M DLF IEF HYF

CE: -4.7 BW: 6.9 WW: 55.4 YW: 88.4 MM: 23.3 TM: 51.0

BW: 92 lbs.

This Tonic daughter is out of a P606 daughter, who in turn is out of Jeromy and Arden's donor dam, Connie 20M. 9A can take a walk on the "catwalk" any day; tremendous hip and quarter, standing on a powerful hind leg. She shows the cleanliness and length of neck through her front end that can show with the best! She's a super show prospect out of a great cow family.

Entered in Agribition.



Pearl 9A

LOT 10

Blair-Athol 946 *Dee-Lee* 25A

FEMALE PC02984257 DVL 25A Feb 23, 2013

SQUARE-D PLAINSMAN 946Y SQUARE-D RANCHMAN 257R DLF IEF HYF
DLF IEF HYF P C02958214 SQUARE-D JAEDEN 846U DLF IEF HYF

BLAIR-ATHOL 19M DELLA 22X BLAIR-ATHOL 20 THE ROCK ET 19M
P C02944461 BLAIR-ATHOL 6L DEE-LEE 72T

CE: -1.7 BW: 5.5 WW: 55.4 YW: 87.3 MM: 20.5 TM: 48.2

BW: 63 lbs.

A real pretty Plainsman daughter ... out of a Rock three year old. Muscle shape, pattern and color, so typical of the job Plainsman did for us. We didn't get our calving information in before the June deadline, but I feel pretty sure the birth weight number will lower considerably on Plainsman progeny. Eight heifer calves had an average birth weight of just 84 lbs. and 6 bull calves averaged 92.5 lbs.



Dee-Lee 25A

SHAKIRA 41Z



LOT 11

Blair-Athol 161 *Shakira* 41Z
FEMALE PC02970043 DVL 41Z MAR 4, 2012

REMITALL HEATER 161U
DLF IEF HYF P C02909574

BNMHPH 13P HEAT 101S DLF IEF HYF
RU 2M DEBRA 141P

BLAIR-ATHOL 20X SHAKIRA ET 34R
P C02871564

REMITALL KEYNOTE 20X
MHR 2B MILDRED 76B 56D

CE: -1.2 BW: 4.4 WW: 47.0 YW: 84.6 MM: 20.0 TM: 43.5

BW: 99 lbs.

Cow power to burn!! Shakira's, Keynote dam is a maternal sister to Blair Athol Online 13K. This long and broody female is my pick of our bred heifers offered for sale. Her service is doubly exciting ... Time's A Wastin was overall Grand Champion Hereford Bull in Denver in January 2013. Not only did we appreciate the bull, we were very impressed with his first set of calves in the Thomas string.

Bred May 23, 2013 to RST Time's A Wastin 0124.

Projected calving date, March 3, 2014.

Entered in Agribition

LOT 12

Blair-Athol 69T *Carol* ET 63Z DLF IEF HYF
FEMALE PC02979432 DVL 63Z MAR 21, 2012

HARVIE TRAVELER 69T
DLF IEF HYF P C02895589

KAIRURU ABERDEEN 03 0047
HARVIE PEARL 129P

BLAIR-ATHOL 20 GRETCHEN ET 36R
P C02871566

REMITALL KEYNOTE 20X
MHR 35A HAZEL 54A 18D

CE: -3.7 BW: 6.4 WW: 63.2 YW: 105.0 MM: 19.5 TM: 51.1

BW: 95 lbs.

Carol 63Z was a late addition to our group of bred heifers. Full sister to National and Agribition Reserve Grand Champion Bull ... NBG 69T The Wonderer ET 3W. Right out of our replacement pen 63Z is a powerful hipped, deep ribbed brood cow prospect with lots of pigment. Full sister to 57W one of the best young cows at Blair Athol ... she has a beautiful udder and has given us three bull calves in a row.

Exposed to Blair Athol 20X Jazz ET 26Y from June 26 to August 11, 2013.

Preg checked safe for an April calf.

LOT 13

Blair-Athol *Market Dew* ET 62Z DLF IEF HYF
FEMALE PC02978755 DVL 62Z MAR 21, 2012

STAR MARKET INDEX 70X ET
DLF IEF HYF P C02965481

RVP STAR 533P CAN-AM ET 57U
NJW 29M INVESTOR GAL 129R DLF IEF HYF

RU 65F KIMBERLY 31K
DLF IEF HYF P C02771617

RU 20X FUTURE 65F
RU 22D JANA 31H

CE: -2.6 BW: 5.0 WW: 61.0 YW: 96.1 MM: 21.2 YW: 51.7

BW: 75 lbs.

A Market Index embryo out of the great breeding 31K cow, dam of Classic 53U. This female is structurally sound and very pretty. Any time that you can get a 31K daughter, I would recommend you do it! 31K progeny are in Finland, Germany, USA and Canada. A full brother sold in our spring bull sale to Don Priddy for \$3500.00.

Exposed to Blair Athol 6 Solid 131T from May 21 to August 12, 2013.

MARKET DEW 62Z



LOT 14

Blair-Athol 26X *Heather* 75Z

FEMALE PC02970832 DVL 75Z MAR 28, 2012

BLAIR-ATHOL 36N TRUMP 26X
DLF IEF HYF P C02943764

HF 4L BEYOND 36N
BLAIR-ATHOL 20X CARRIE ET 46R

ICF LASS 59M 114T

P C02895608

GHC STAR MOOSE 59M
BARHAVEN LASS 28U 4M

CE: -3.8 BW: 6.2 WW: 58.2 YW: 102.6 MM: 11.4 TM: 40.5

BW: 85 lbs.

A Beyond granddaughter out of a cow we purchased from Bruce and Heather Ribey, Ontario. It certainly looks like she'll make a good cow.

Exposed to Blair Athol 6 Solid 131T from May 21 to August 12, 2013.



HEATHER 75Z

LOT 15

Blair-Athol *Rose Marie* 96Z

FEMALE PC02970085 DVL 96Z APR 17, 2012

BLAIR-ATHOL 6 SOLID 131T
P C02908586

RU 25C LEE 6L
BLAIR-ATHOL 20 GRETCHEN ET 36R

BLAIR-ATHOL FUTURE ROSIE 115X
C02944447

BLAIR-ATHOL FUTURE LUCK 50U DLF IEF HYF
RU 67N ROSIE 25R

CE: -1.9 BW: 7.0 WW: 62.2 YW: 100.6 MM: 21.3 TM: 52.4

BW: 90 lbs.

This young, April heifer is one that we really like ... big barreled and feminine. Her dam is a maternal sister to Lot 3 (22A) a feature heifer calf in the sale. Here's a good one to score high!

Bred May 16, 2013 to Square D Plainsman 946Y.

Projected calving date, February 24, 2014.



ROSE MARIE 96Z

LOT 16

Blair-Athol *Tyra's Wonder* 10Z

FEMALE PC02985355 DVL 10Z FEB 18, 2012

NBG 69T THE WONDERER 36R ET 3W
DLF IEF HYF P C02927066

HARVIE TRAVELER 69T DLF IEF HYF
BLAIR-ATHOL 20 GRETCHEN ET 36R

TWIN-VIEW 80L TYRA 50U
P C02912138

BBSF 7C LONE RANGER 80L
TWIN-VIEW 9G LADY LUCK 4J

CE: 0.6 BW: 2.7 WW: 50.0 YW: 79.0 MM: 19.3 TM: 44.3

BW: 90 lbs.

A real attractive daughter of Agribition Reserve Champion Bull ... "the Wonderer." Short marked, sweet fronted and square hipped, out of a hard working Twin View cow. A maternal sister sold in 2011 to Jamie O'Shea, Ontario.

Bred May 24, 2013 to Square D Plainsman 946Y.

Projected calving date, March 4, 2014.



TYRA'S WONDER 10Z

BRIANA 33Z



LOT 17

Blair-Athol 161 *Briana* 33Z

FEMALE PC02970046 DVL 33Z Feb 27, 2012

REMITALL HEATER 161U BNMHPH 13P HEAT 101S DLF IEF HYF
DLF IEF HYF P C02909574 RU 2M DEBRA 141P

BLAIR-ATHOL 6 A LADY 2S RU 25C LEE 6L
P C02879110 BRAESWOLD 20X LDY KEYNOTE 792G

CE: -1.6 BW: 5.6 WW: 53.5 YW: 90.7 MM: 21.3 TM: 48.1

BW: 76 lbs.

Probably our largest framed heifer on offer this year. Big, deep ribbed and a good cow family to back her up. A maternal sister works at Triple H, the Heideckers of Middle Lake, SK.

Bred May 24, 2013 to BBSF 719T Zach 60Z and then exposed to Square D Plainsman 946Y from June 24 to August 11, 2013.

ELLY MAE 50Z



LOT 18

Blair-Athol 70X *Elly Mae* 50Z

FEMALE PC02970399 DVL 50Z MAR 10, 2012

STAR MARKET INDEX 70X ET RVP STAR 533P CAN-AM ET 57U
DLF IEF HYF P C02965481 NUJ 29M INVESTOR GAL 129R DLF IEF HYF

BLAIR-ATHOL 80P CENTERFOLD 42U LAGRAN RELOAD 80P ET DLF IEF HYF
P C02916109 WILGOR 47K DANCETTE 37H 41N

CE: -5.8 BW: 8.1 WW: 72.2 YW: 116.9 MM: 20.9 TM: 57.0

BW: 106 lbs.

Elly Mae is sired by Market Index and out of Centerfold 42U. A big, solid female with lots of substance and capacity, just like her illustrious ancestors ... the Wilgor Dancette cows.

Bred June 3, 2013 to Blair Athol 13K Major 101N.

Projected calving date, March 14, 2013.

Owned jointly with Abby Hill Farms.

MAJORETTE 79Z



LOT 19

Blair-Athol 101 *Majorette* 79Z

FEMALE PC02970036 DVL 79Z MAR 31, 2012

BLAIR-ATHOL 13K MAJOR 101N BLAIR-ATHOL 65F ON LINE 13K
DLF IEF HYF P C02849990 BLAIR-ATHOL 25C AMIGA 20K

J/C ADVANCEY LADY 15P J/C REDPATH CHOICE 23L
P C02848373 J/C ADVANCEY LASS 17H

CE: 0.3 BW: 4.8 WW: 46.6 YW: 75.5 MM: 22.9 TM: 46.2

BW: 90 lbs.

Our only Major daughter to sell. In this past year the Major daughters have made an impact across Canada. Big barreled, pigmented, with beautiful udders, is their trademark. 79Z will be the same; the Classic/Major cross has been exceptional.

Bred May 5, 2013 to Blair Athol Classic 53U.

Projected calving date, February 13, 2014.

LOT 20

Blair-Athol 131T *Julia* 106Z

FEMALE PC02970079 DVL 106Z APR 28, 2012

BLAIR-ATHOL 6 SOLID 131T
P C02908586

RU 25C LEE 6L
BLAIR-ATHOL 20 GRETCHEN ET 36R

BLAIR-ATHOL 80P JULIA 11W
P C02930268

LAGRAND RELOAD 80P ET DLF IEF HYF
EASTON QUEEN 3H

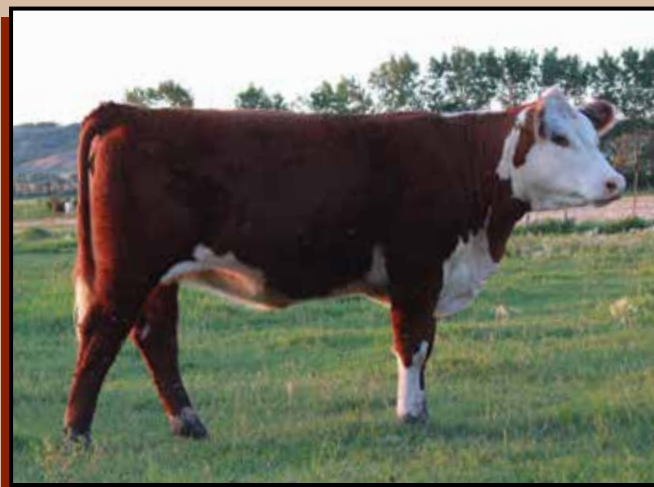
CE: -4.4 BW: 8.3 WW: 58.3 YW: 100.6 MM: 17.4 TM: 46.6

BW: 103 lbs.

This big, roomy, Solid daughter is just that ... big and solid, feminine with muscle. Her dam is one of our best young cows and is an own daughter of Eaton Queen 3H. There are some pretty darn good cows around the country that go back to 3H ... Maple Hill, River Valley, Medonte and Glenlees, just to name a few.

Bred May 14, 2013 to Blair Athol 13K Major 101N.

Projected calving date, February 22, 2014.



Julia 106Z

LOT 21

Blair-Athol *Classy Lassy* 111Z

FEMALE PC02970052 DVL 111Z MAY 1, 2012

BLAIR-ATHOL CLASSIC 53U
P C02916096

MHCVB 68M PROWLER 118P
RU 65F KIMBERLY 31K DLF IEF HYF

BLAIR-ATHOL 101 SASS 65S
P C02885111

BLAIR-ATHOL 13K MAJOR 101N DLF IEF HYF
BLAIR-ATHOL 234 SASSY 189K

CE: 1.0 BW: 2.5 WW: 41.2 YW: 74.8 MM: 22.8 TM: 43.4

BW: 80 lbs.

Classy Lassy is so well named ... beautiful extension through her front end, long bodied, milky looking, dark colored and pigmented. As nice a set of numbers as we have. For those that like to calve a little later ... she calves in early April 2014.

Exposed to Blair Athol 20X Jazz ET 26Y from June 26 to August 11, 2013.



Classy Lassy 111Z

LOT 22

Ru Ba 33T *Melody* 215Z

FEMALE PC02971397 EKD 215Z FEB 20, 2012

LOEWEN M326 SIR 33T
DLF IEF HYF P C02956736

KCF BENNETT 3008 M326 DLF IEF HYF
HVH OKSANA 4L 33N DLF IEF HYF

MCCOY 25M MELODY 144X
DLF IEF HYF P C02954941

GHR MILLIONAIRE 10E 25M
MCCOY 58G MELODY 103L

CE: 1.1 BW: 5.2 WW: 57.4 YW: 93.0 MM: 19.5 TM: 48.2

BW: 90 lbs.

Purchased in dam from McCoy Herefords of Milestone, SK. Red, soggy, easy fleshing and "cowy" looking. Chad didn't get many calves sired by the Loewen bull ... so here's something a little different.

Exposed to Blair Athol Classic 53U from May 26 to June 20, 2013.

Preg checked safe.



Melody 215Z

MAJOR 101N



Ref Blair-Athol *Major* 101N {DLF IEF HYF}
 MALE PC02849990 DVL 101N DEC 17, 2003

BLAIR-ATHOL 65F ON LINE 13K RU 20X FUTURE 65F
 P C02760396 MHR 2B MILDRED 76B 56D

BLAIR-ATHOL 25C AMIGA 20K NJW Z17 VAQUERO 25C
 P C02764695 BLAIR-ATHOL LADY GRACE 14F

CE: 1.3 BW: 5.3 WW: 47.4 YW: 83.3 MM: 34.1 TM: 57.8

Sire of lot 19

Service sire to lots 18 & 20

SOLID 131T



Ref Blair-Athol *Solid* 131T
 MALE PC02908586 DVL 131T Jul 17, 2007

RU 25C LEE 6L NJW Z17 VAQUERO 25C
 P C02826786 HAROLDSON'S FAITH 20X 26J

BLAIR-ATHOL 20 GRETCHEN ET 36R REMITALL KEYNOTE 20X
 P C02871566 MHR 35A HAZEL 54A 18D

CE: 0.7 BW: 5.0 WW: 59.0 YW: 97.6 MM: 16.6 TM: 46.1

Sire of lots 15 & 20

Service sire to lot 13 & 14

CLASSIC 53U



Ref Blair-Athol *Classic* 53U
 MALE PC02916096 DVL 53U MAR 10, 2008

MHCVB 68M PROWLER 118P STAR AMERICA BNMHPH SS MKS 68M DLF IEF HYF
 P C02848089 DC 23S KATE 2K

RU 65F KIMBERLY 31K RU 20X FUTURE 65F
 DLF IEF HYF P C02771617 RU 22D JANA 31H

CE: -1.4 BW: 4.8 WW: 49.3 YW: 89.0 MM: 19.5 TM: 44.2

Sire of lot 21

Service sire to lots 19 & 22

PLAINSMAN 946Y



Ref SQUARE-D *Plainsman* 946Y {DLF IEF HYF}
 MALE PC02958214 SAZ 946Y MAR 22, 2011

SQUARE-D RANCHMAN 257R SQUARE-D STINGER 779K
 DLF IEF HYF P C02892941 SQUARE-D AMANDA 975K DLF IEF HYF

SQUARE-D JAEDEN 846U SADDLE-VALLEY 203E HAMM 822H
 DLF IEF HYF P C02921154 NCX MERAIDIE 469M

CE: -2.1 BW: 5.3 WW: 50.2 YW: 75.3 MM: 22.8 TM: 47.9

Sire of lot 2 & 10

Service sire to lots 15, 16 & 17



ROCKETT 12T 28W



ALANA 28W 15A

LOT 23 Til-Toba *Rockett* 12T 28W
 FEMALE PC02930254 WRAY 28W MAR 17, 2009

LOT 23A Til-Toba *Alana* 28W 15A
 FEMALE PC02984713 WRAY 15A MAR 5, 2013

MIL-WRAY ROCKET 8R
 P C02865370 TILTOBA ROCKET 4W 8A
 KJE DAYLITE 119L DLF IEF HYC

MEADOW-ACRES CONNECTED 13K 86R BLAIR-ATHOL 65F ON LINE 13K
 P C02861117 MEADOW-ACRES 66E ADA 102M 5G

TIL-TOBA TANIS 11J 12T
 P C02900425 ANL 4L MATADOR 76P
 TCPH MS FELICIA 11J

TIL-TOBA ROCKETT 12T 28W
 P C02930254 MIL-WRAY ROCKET 8R
 TIL-TOBA TANIS 11J 12T

CE: -0.3 BW: 3.0 WW: 37.5 YW: 64.9 MM: 17.7 TM: 36.5
 BW: 79 lbs.

(PE)
 CE: 0.4 BW: 4.0 WW: 43.1 YW: 73.7 MM: 21.7 TM: 43.3
 BW: 91 lbs.

It took a long time to decide to part with this young 8R daughter. Her mother is a full sister to the Sign Up bull we own with David Irwin and then sold him to Doug Troop. 28W is a moderate framed cow with loads of milk ... her Connected heifer calf has the same look! 28W sells bred to the Denver Reserve Junior Bull Calf Champion. Bred May 11, 2013 to TDP Crossover Z400. Preg checked safe to service.

15A is a very showy, dark red, ring eyed Connected daughter ... the Connected daughters all work very well. 15A and her dam, 28W, make a very good pair!

LOT 24 Til-Toba *Zeeba* 23W 1Z
 FEMALE PC02976064 WRAY 1Z JAN 2, 2012

BAR-J-M FUSSION 9S
 DLF IEF HYF P C02878829 GH COL PATTON 20P
 BAR-J-M GLORIA 9P

BAR-J-M TWIP 23W
 DLF IEF HYF P C02926892 BAR-J-M ROJO 5T
 BAR-J-M TULIP 7T

CE: -1.6 BW: 3.4 WW: 40.7 YW: 74.7 MM: 21.4 YW: 41.8
 BW: 82 lbs.

1Z is out of a good four year old cow we purchased from Bar J-M Herefords. Zeeba is a very feminine Fussion daughter. Exposed to WSF Can - Am Prince 143 from June 1 to August 1, 2013. Preg checked safe for 50 days on August 12, 2013.



ZEEBA 23W 1Z

Zella 315U 25Z



LOT 25 Til-Toba *Zella* 315U 25Z
 FEMALE PC02972252 WRAY 25Z MAR 10, 2012

GH ADAMS 179R STANLEY 180U FE 17L STAN BRIT 179R
 P C02911604 BLAIR-ATHOL LD GEENA 8P

XLP CLF 61P SARA 315U GH LD WILDCARD 61P DLF IEF HYF
 P C02923756 XLP CLF 108N SARA 315S

CE: 1.3 BW: 3.9 WW: 46.0 YW: 83.0 MM: 18.1 TM: 41.1

BW: 86 lbs.

A Stanley daughter out of a very good producing cow. She is very stout with lots of rib and will make an easy doing cow.

Exposed to WSF Can – Am Prince 143 from June 1 to August 1, 2013.

Preg checked safe for 55 days on August 12, 2013.

Zella 24R 35Z



LOT 26 Til-Toba *Zella* 24R 35Z
 FEMALE PC02972241 WRAY 35Z MAR 19, 2012

GH ADAMS 179R STANLEY 180U FE 17L STAN BRIT 179R
 P C02911604 BLAIR-ATHOL LD GEENA 8P

TIL-TOBA MARLA 3M 24R DTHF MARLBOURGH 44M
 P C02866286 TIL-TOBA PRINCESS 4K 3M

CE: 1.9 BW: 3.7 WW: 46.6 YW: 76.3 MM: 18.7 TM: 42.0

BW: 87 lbs.

Zella is another very thick, deep bodied Stanley daughter out of a good uddered Marlborough daughter, who has always produced very good offspring.

Exposed to WSF Can – Am Prince 143 from June 1 to August 1, 2013.

Preg checked safe for 50 days on August 12, 2013.

Zina 58T 55Z



LOT 27 Til-Toba *Zina* 58T 55Z
 FEMALE PC02972248 WRAY 55Z APR 26, 2012

MEADOW-ACRES CONNECTED 13K 86R BLAIR-ATHOL 65F ON LINE 13K
 P C02861117 MEADOW-ACRES 66E ADA 102M 5G

TWIN-VIEW 30N KAYLEE 58T TWIN-VIEW 48G REMINGTON 30N
 P C02895773 TWIN-VIEW 3Z JOSEPHINE 41L

CE: -1.0 BW: 7.0 WW: 50.1 YW: 83.9 MM: 23.9 TM: 49.0

BW: 102 lbs.

55Z is a short marked, red eyed Connected daughter. The Connected daughters make very good cows and she will be no exception. Zina is out of a good milking Twin View cow ... take a close look at this young April heifer!

Bred May 9, 2013 to Boyd Masterpiece 02 20. No cleanup bull used.

Preg checked safe in calf on August 12, 2013.

LOT 28

Mil-Wray *Candi* 34Z

FEMALE PC02974358 AKRS 34Z MAR 15, 2012

MEADOW-ACRES CONNECTED 13K 86R BLAIR-ATHOL 65F ON LINE 13K
P C02861117 MEADOW-ACRES 66E ADA 102M 5G

MIL-WRAY MOLLY 28S DTHF MARLBOURGH 44M
P C02885161 MIL-WRAY FRAN 6P

CE: 0.0 BW: 5.5 WW: 52.8 YW: 79.6 MM: 17.8 TM: 44.2

BW: 90 lbs.

34Z is an excellent Connected daughter, out of an extremely productive DTHF Marlborough 44M cow. Her mother never fails to bring in a top calf.

Exposed to WSF Can-Am Prince 143 from May 1 to August 1, 2013.

Preg checked, with an early June breeding date.



CANDI 34Z

LOT 29

Mil-Wray *Ravine* 38Z

FEMALE PC02974366 AKRS 38Z MAR 17, 2012

MIL-WRAY ROCKET 8R TIL-TOBA ROCKET 4W 8A
P C02865370 KJE DAYLITE 119L DLF IEF HYC

MIL-WRAY CORA 15X MEADOW-ACRES CONNECTED 13K 86R
P C02944559 MIL-WRAY MONA 6J

CE: 2.4 BW: 1.4 WW: 31.6 YW: 52.8 MM: 10.4 TM: 26.2

BW: 71 lbs.

38Z is thick, dark red, and out of a first calf heifer. We have retained several Rocket 8R heifers in our herd, and they have all worked very well.

Exposed to WSF Can-Am Prince 143 from May 1 to August 1, 2013.

Preg checked, with a mid June breeding date.



RAVINE 38Z

TIL-TOBA/MILWRAY REFERENCE SIRE

Ref

WSF CAN-AM *Prince* 143 DLF IEF HYF
MALE PC02965685 143 Feb 11, 2011

RVP STAR 533P CAN-AM ET 57U STAR BRIGHT FUTURE 533P ET
P C02918528 STAR BONNIE BETH 54N

THM 711 PRINCESS PRIME 8695 DRF JWR PRINCE VICTOR 711
DLF IEF HYF P C02922323 WILL-VIA MS PRIME N-74

CE: -1.7 BW: 4.0 WW: 53.3 YW: 84.1 MM: 23.1 TM: 49.8

Service sire to lots 25, 26, 27, 29 & 30



Taylor 118U 62A



LOT 30 ROSELAWN *Taylor* ET 118U 62A DLF IEF HYF
FEMALE Pending AHK 62A MAR 15, 2013

MHPH 101S UMPIRE 118U BNMHPH 13P HEAT 101S DLF IEF HYF
DLF IEF HYF P C02909473 MHPH MS 68M NITA 1112R DLF IEF HYF
C&T 12R TAYLOR ET 55U GHC CANUCK 12R
DLF IEF HYF P C02915937 C&T 4G SCARLET 17K

(PE)
CE: -2.8 BW: 5.3 WW: 52.3 YW: 88.4 MM: 16.2 TM: 42.3
BW: 96 lbs.

A very sharp fronted, dark red, eye appealing heifer that I really appreciate. Here's a chance to own an Umpire daughter.



Umpire 118U
SIRE of LOT 31

Taylor 11X 67A



LOT 31 ROSELAWN *Taylor* ET 11X 67A DLF IEF HYF
FEMALE Pending AHK 67A MAR 16, 2013

TH 71U 719T MR HEREFORD 11X TH 122 71I VICTOR 719T DLF IEF HYF
DLF IEF HYF P C02964813 TH 7N 45P RITA 71U DLF IEF HYF
C&T 12R TAYLOR ET 55U GHC CANUCK 12R
DLF IEF HYF P C02915937 C&T 4G SCARLET 17K

(PE)
CE: -1.8 BW: 5.0 WW: 59.5 YW: 87.2 MM: 17.7 TM: 47.5
BW: 107 lbs.

I really like this red eyed, clean fronted heifer. She has the look, depth and thickness to do well in the show ring and also make a great cow. This is a rare chance to get a Mr Hereford heifer this fall. Don't miss this one!



Mr Hereford 11X
SIRE of LOT 32

Payton 10W 35Z



LOT 32 ROSELAWN *Payton* 10W 35Z DLF IEF HYF
FEMALE PC02967505 AHK 35Z MAR 4, 2012

HAROLDSON'S TANK 45P 10W NJW FHF 9710 TANK 45P DLF IEF HYF
DLF IEF HYF P C02939176 SQUARE-D NATALIE 516L
ROSELAWN KARLI 82P 94W HF 4L PHOENIX 82P
P C02927384 ROSELAWN AMBER 81N 14S DLF IEF HYC

CE: -1.3 BW: 4.4 WW: 45.5 YW: 75.3 MM: 21.0 TM: 43.8
BW: 94 lbs

An interesting Tank daughter. She goes back to the 2J cow that left some good females. Her mating to Stackers should be very interesting.
Pasture exposed to Glenlees DBK 92W Stacker 2Z from May 20 to August 12, 2013. Preg. checked safe to calve in April, 2014.

LOT 33

Roselawn *Sydney TX 55Z* DLF IEF HYF

FEMALE PC02967501 AHK 55Z MAR 9, 2012

HAROLDSON'S WS CROWNLIN 4T 7X HAROLDSON'S WLL ANCHOR 4T
DLF IEF HYF P C02943898 MHPH MS 68M GLORIA 1201R DLF IEF HYF

ROSELAWN ERIN 22N 96U JWH 4L NEXT STEP 22N
DLF IEF HYF P C02915239 C&T 9K DANCER 23P

CE: -3.7 BW: 6.6 WW: 45.9 YW: 75.0 MM: 17.8 TM: 40.8

BW: 94 lbs.

Wow! Red-eyed, dark haired and very eye appealing. We wouldn't be selling her except we have a full sister in the heifer calf pen. Her mother and grandmother are great uddered and pump them out every year.

Pasture exposed to Glenlees DBK 92W Stacker 2Z from May 20 to August 12, 2013. Preg. checked safe to calve in March, 2014.



Sydney TX 55Z

LOT 34

Roselawn *Piper 154U 77Z* DLF IEF HYF

FEMALE PC02985556 AHK 77Z MAR 16, 2012

HARVIE OVHF WALK HARD 154U HARVIE RAFTSMAN 16R DLF IEF HYF
DLF IEF HYF P C02912991 BBSF 100L UNIQUE ET 131R DLF IEF HYF

ROSELAWN KARLI 82P 550T HF 4L PHOENIX 82P
DLF IEF HYF P C02901051 ROSELAWN VICTORIA 7H 63M

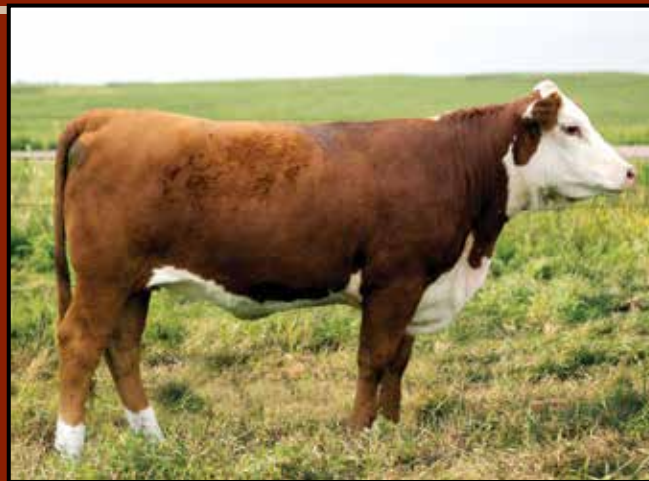
(PE)

CE: -1.8 BW: 4.3 WW: 49.6 YW: 78.3 MM: 19.6 TM: 44.4

BW: 96 lbs.

A great Walk Hard daughter that comes from the top end of our replacement pen. She's deep ribbed with a smooth shoulder and a sweet, feminine head. Bred to Tank 10W, the results should be predictably excellent.

Pasture exposed to Haroldson's Tank 45P 10W from May 20 to August 12, 2013. Preg. checked safe to calve in March, 2014.



Piper 15U 77Z

LOT 35

Roselawn *Sydney TX 80Z* DLF IEF HYF

FEMALE PC02967499 AHK 80Z MAR 17, 2012

HAROLDSON'S WS CROWNLIN 4T 7X HAROLDSON'S WLL ANCHOR 4T
DLF IEF HYF P C02943898 MHPH MS 68M GLORIA 1201R DLF IEF HYF

ROSELAWN RHENA 121R 77U DTHF RASPUTIN 121R DLF IEF HYF
DLF IEF HYF P C02915235 ROSELAWN KEESHA 005 39N

CE: -2.6 BW: 6.2 WW: 49.9 YW: 78.6 MM: 19.5 YW: 44.5

BW: 96 lbs.

These Crowline daughters look like they will make great cows. 80Z is no exception. Lots of eye appeal, milk and broodiness here.

Pasture exposed to Glenlees DBK 92W Stacker 2Z from May 20 to August 12, 2013. Preg. checked safe to calve in March, 2014.



Sydney TX 80Z

LOT 36

Roselawn *Piper 154U 92Z* DLF IEF HYF

FEMALE PC02967492 AHK 92Z MAR 25, 2012

HARVIE OVHF WALK HARD 154U HARVIE RAFTSMAN 16R DLF IEF HYF
DLF IEF HYF P C02912991 BBSF 100L UNIQUE ET 131R DLF IEF HYF

ROSELAWN MDG ZENA 68P DOUBLE-U LTD EDITION ET 161L
DLF IEF HYF P C02849752 MCCOY 32K ZENA 28M

CE: -0.1 BW: 3.7 WW: 52.9 YW: 92.8 MM: 22.8 TM: 49.3

BW: 90 lbs.

A heifer with lots of power and go to her. We have been mating Walk Hard daughters to Tank 10W for a couple of years now and the results have been excellent.

Pasture exposed to Haroldson's Tank 45P 10W from May 20 to August 12, 2013. Preg. checked safe to calve in early March, 2014.



Piper 154U 92Z

Piper 154U 113X



GAME CHANGER ET



LOT 37

Four (4) *Exportable Embryos*
 STORED AT EMBRYO GENETICS LTD - MORDEN, MB

H BK CCC SR GAME CHANGER ET
 P43296077

KJ HVH 33N REDEEM 485T ET CHB DLF HYF IEF
 NUW 78P 63N LADYSPORT 51W ET DLF HYF IEF

ROSELAWN PIPER 154U 113X
 DLF IEF HYF P C02939787

HARVIE OVHF WALK HARD 154U DLF IEF HYF
 ROSELAWN VICTORIA 7H 85M

Piper 113X is an exceptionally good Walk Hard daughter that we are very high on. She is deep ribbed with a beautiful head and front end, a flawless udder with great milk flow. She has raised two daughters we are retaining in the herd. H BK CCC SR Game Changer ET was the Junior Divisional Champion at Agribition 2013 and high seller at Hoffman's Fall Sale. He had tremendous top and thickness in his rear quarter. Semen was late getting to Canada so this will be your only chance to get progeny off this outcross mating.

(PE)
 CE: -0.4 BW: 4.0 WW: 33.4 YW: 88.4 MM: 17.8 TM: 44.5

Ref GLENLEES DBK 9W *Stacker* 2Z DLF IEF HYF
 MALE PC02975891 AHL 2Z JAN 23, 2012

KTCT 10S STACKER 9W
 DLF IEF HYF P C02925415

ANL 3N STACKER 10S
 MCCOY 58G SUE 161S

KTCT 33S PERL 20X
 P C02948456

MAR 236G SPIKE 33S
 KTCT 5R PERLA 18T

CE: 3.6 BW: 2.7 WW: 47.8 YW: 85.4 MM: 19.4 TM: 43.3

Our new Junior herd sire purchased from Glenlees last spring. He was bought for calving ease and used heavily on heifers this summer.

Service sire of Lots 32, 33 & 35

Ref HARVIE OVHF *Walk Hard* 154U DLF IEF HYF
 MALE PC02912991 CVIH 154U MAR 29, 2008

HARVIE RAFTSMAN 16R
 DLF IEF HYF P C02865314

HARVIE LADIES MAN 4L DLF IEF HYF
 HARVIE MISS FIREFLY 51F DLF IEF HYF

BBSF 100L UNIQUE ET 131R
 DLF IEF HYF P C02872531

BRL CALL 100L DLF IEF
 BBSF 7C UNIQUE 1K

CE: -0.3 BW: 3.6 WW: 55.4 YW: 84.5 MM: 21.7 TM: 49.4

Walk Hard is gaining notoriety for great looking females with perfect udders and milk flow.

Sire of Lots 34, 36 & 37 (donor cow)

STACKER 2Z



WALK HARD 154U



Ref Haroldson's *Crownline* 4T 7X DLF IEF HYF
 MALE PC02943898 AFSY 7X Feb 14, 2010

HAROLDSON'S WLL ANCHOR 4T REMITALL GOVERNOR 236G
 P C02901004 HAROLDSON'S 37H MIRA ET 62K

MHPH MS 68M GLORIA 1201R STAR AMERICA BNMHPH SS MKS 68M DLF IEF HYF
 DLF IEF HYF P C02860871 GHC MISS VINDICATOR 69M DLF IEF HYF

CE: -3.2 BW: 7.8 WW: 54.7 YW: 90.5 MM: 20.4 TM: 47.8
 Study this guy's pedigree. There is a lot of good cattle here. He has left us a good group of both bull calves and heifer calves.
 Sire of Lots 32, 33 & 35



Crownline 4T 7X

Ref Haroldson's *Tank* 45P 10W DLF IEF HYF
 MALE PC02939176 AFSY 10W Feb 12, 2009

NJW FHF 9710 TANK 45P FHF 8403 STARBUCK 19H
 DLF IEF HYF P C02924181 GV 579 VICTORIA 9710

SQUARE-D NATALIE 516L WLB 24F BREWSTER 10E 22J
 P C02785566 SQUARE-D KATIE 816

CE: 1.9 BW: 2.1 WW: 45.2 YW: 74.9 MM: 23.9 TM: 46.5
 A bull that has been used heavily at Roselawn. He has left us a great set of both bulls and heifers. We have used him on our Walk Hard daughters the past 2 years with no calving problems. His calves always come in extra heavy at weaning.
 Sire of lots 34 & 36 Service sire of Lots 41, 43 & 49



Tank 45P 10W

Ref Haroldson's *WLL Anchor* 4T
 MALE PC02901004 AFSY 4T JAN 20, 2007

REMITALL GOVERNOR 236G REMITALL CASINO 12C
 P C02676840 REMITALL ZERMARVEL 111Z

HAROLDSON'S 37H MIRA ET 62K REMITALL HOLLYWOOD 37H
 P C02777365 HAROLDSON'S CU DESTINY 2Z 19G

CE: -1.8 BW: 5.4 WW: 57.7 YW: 97.6 MM: 19.6 TM: 48.5
 Sire of lot 47



Anchor 4T

Ref Haroldson's *Young Gun* 4T 92Y DLF IEF HYF
 MALE PC02957236 AFSY 92Y Apr 26, 2011

HAROLDSON'S WLL ANCHOR 4T REMITALL GOVERNOR 236G
 P C02901004 HAROLDSON'S 37H MIRA ET 62K

HAROLDSON'S BP EMERALD 122L 9R REMITALL ONLINE 122L
 P C02889757 DURALTA 60G EMERALD 123N

CE: -1.2 BW: 5.6 WW: 57.0 YW: 97.5 MM: 20.1 TM: 48.6
 Sire of lots 38 & 45



Young Gun 4T 92Y

RENO 15W



VICTOR 52IX



TAHOE T100



UNTAPPED 425X



Ref

HAROLDSON'S WLC *Reno* 5W DLF IEF HYF
 MALE PC02948654 AFSY 15W JAN 3, 2009

HARVIE RAFTSMAN 16R HARVIE LADIES MAN 4L DLF IEF HYF
 P C02865314 HARVIE MISS FIREFLY 51F DLF IEF HYF

HAROLDSON'S 37H MIRA ET 62K REMITALL HOLLYWOOD 37H
 P C02777365 HAROLDSON'S CU DESTINY 92Z 19G

CE: 2.0 BW: 0.5 WW: 45.4 YW: 75.0 MM: 13.1 TM: 35.8

Sire of lots 46, 47, 48, 49, 50, 51, 52, 53, 54 & 55

Ref

TH 122 71I *Victor* 52IX ET DLF IEF HYF
 MALE PC02963602 52IX APR 12, 2010

DRF JWR PRINCE VICTOR 71I HRP THM VICTOR 109W 9329
 P A41141619 RHF 964 VICTRA 4057

KBCR 19D DOMINETTE 122 NJW 1Y WRANGLER 19D
 DLF IEF P A42220359 KBCR DOMINETTE 9112

CE: 5.9 BW: 1.3 WW: 65.4 YW: 99.2 MM: 21.7 TM: 54.4

Sire of lots 40 & 49 Service sire to lots 46, 48, 50, 51, 52, & 54

Ref

SHF *Tahoe* R117 T100
 MALE PC02933797 T100 FEB 21, 2007

SHF RIB EYE M326 R117 KCF BENNETT 3008 M326 DLF IEF HYF
 DLF IEF HYF P C02910420 HVH MISS HUDSON 83K 8M

SHF LADY 512 L73 MM RSM STOCKMASTER 512
 P A42176576 SHF INTERSTATE D03 G28

CE: 2.0 BW: 3.4 WW: 67.8 YW: 110.1 MM: 20.3 TM: 54.2

Sire of lots 39, 52, 54, 55 & 56

Ref

TH 89T 743 *Untapped* 425X ET DLF IEF HYF
 MALE PC02960411 425X MAR 8, 2010

CRR ABOUT TIME 743 THM DURANGO 4037 DLF IEF HYF
 DLF IEF HYF P C02935725 CRR D03 CASSIE 206

TH 16G 20N GEMINI 89T NPH 20X SPARTAN 20N DLF IEF HYF
 DLF IEF HYF P A42779363 TEE-JAY 707B GEMINI ET 16G

CE: 0.0 BW: 3.6 WW: 57.5 YW: 93.2 MM: 22.6 TM: 51.4

Sire of lots 41, 44, 46 & 50 Service sire to lot 49

Ref

HAROLDSON'S *Liner* 52IX 12Z
 MALE PC02970338 AFSY 12Z FEB 22, 2012

TH 122 71I VICTOR 52IX ET DRF JWR PRINCE VICTOR 71I
 DLF IEF HYF P C02963602 KBCR 19D DOMINETTE 122 DLF IEF

TL 5073 JESSICA 751U SR CG HARD ROCK 5073
 DLF IEF HYF P C02913169 TT PETUNIA 128P DLF IEF HYF

CE: 3.0 BW: 2.1 WW: 55.8 YW: 88.6 MM: 22.2 TM: 50.1

Service sire to lot 47

Haroldson's Animals entered in Agribition will incur a cost of \$750.00 to help with show expenses



SARAH 92Y 1A

LOT 38

HAROLDSON'S JVJ *Sarah* 92Y 1A

FEMALE PC02981969 AFSY 1A JAN 26, 2013

LOT 39

HAROLDSON'S AD *Jessica* T100 4A

FEMALE PC02981971 AFSY 4A FEB 16, 2013

HAROLDSON'S YOUNG GUN 4T 92Y
DLF IEF HYF P C02957236

HAROLDSON'S WLL ANCHOR 4T
HAROLDSON'S BP EMERALD 122L 9R

SHF TAHOE R117 T100
P C02933797

SHF RIB EYE M326 R117 DLF IEF HYF
SHF LADY 512 L73

HAROLDSON'S ANL SARAH T100 35W
P C02945212

SHF TAHOE R117 T100
HAROLDSON'S SARAH 122L 22R

HAROLDSON'S WS JESSICA 4T 60X
P C02946316

HAROLDSON'S WLL ANCHOR 4T
TL 5073 JESSICA 751U DLF IEF HYF

CE: 1.4 BW: 3.2 WW: 54.5 YW: 91.4 MM: 18.7 YW: 46.0

BW: 85 lbs.

This will be one of the first Young Gun offspring to sell. She is a real long sided heifer that has an abundance of middle and capacity. Sarah will make a great show heifer and with the maternal strength in her pedigree will be an outstanding cow.

CE: 0.5 BW: 3.6 WW: 59.8 YW: 99.0 MM: 21.1 TM: 51.0

BW: 92 lbs.

A direct daughter of Tahoe that has a tremendous look. This is a heifer that is fault free from every angle. Her grandmother, 751U is one of our top donors. This female would be a great contribution to any herd.



JESSICA T100 4A

FLARE 521X 7A



LOT 40 HAROLDSON'S SCC *Flare* 521X 7A
 FEMALE PC02981974 AFSY 7A Feb 18, 2013

TH 122 711 VICTOR 521X ET DRF JWR PRINCE VICTOR 711
 DLF IEF HYF P C02963602 KBCR 19D DOMINETTE 122 DLF IEF

HAROLDSON'S JVJ FLARE 68M 11Y STAR AMERICA BINMHPH SS MKS 68M DLF IEF HYF
 P C02956887 HAROLDSON'S LASSIE 13P 46T

CE: 0.9 BW: 4.1 WW: 57.6 YW: 91.2 MM: 20.0 TM: 48.8

BW: 84 lbs.

This 521X daughter is really nice fronted with a beautiful look. She is a very structurally sound female with a great hip. She is out of a strong cow family and has an excellent set of data.

ESSENCE 425X 19A



LOT 41 HAROLDSON'S *Essence* 425X 19A
 FEMALE PC02981980 AFSY 19A Feb 28, 2013

TH 89T 743 UNTAPPED 425X ET CRR ABOUT TIME 743 DLF IEF HYF
 DLF IEF HYF P C02960411 TH 16G 20N GEMINI 89T DLF IEF HYF

LRL MISS LAKES 50K 57M HAROLDSON'S 2Z CARUSO ET 50K
 P C02807725 LRL 293H MISS LAKES 15G 57Z

CE: 0.8 BW: 1.8 WW: 38.4 YW: 61.8 MM: 14.5 TM: 33.7

BW: 74 lbs.

This female is really sweet fronted and complete made. She is nice boned and very sound. Being out of the National Champion, Untapped, will make her a strong asset.

LASSIE 41Y 11A



LOT 42 HAROLDSON'S JVJ *Lassie* 41Y 11A
 FEMALE PC02981977 AFSY 11A Feb 23, 2013

HAROLDSONS WLC MOTIVE ET 41Y SHF TAHOE R117 T100
 DLF IEF HYF P C02960239 HAROLDSON'S 37H MIRA ET 62K

HAROLDSON'S LASSIE 13P 46T REMITALL PATRIOT ET 13P
 P C02914289 LRL LASSIE 4J 121M

CE: -0.7 BW: 2.5 WW: 48.7 YW: 81.9 MM: 14.9 TM: 39.3

BW: 92 lbs.

A really nice made heifer calf that is deep sided with added shape. This female is long bodied and has a real maternal look to her. She will be a solid investment.

LOT 43

HAROLDSON'S *Erin* 45P 20A

FEMALE PC02981981 AFSY 20A Feb 28, 2013

NJW FHF 9710 TANK 45P
DLF IEF HYF P C02924181

FHF 8403 STARBUCK 19H
GV 579 VICTORIA 9710

HAROLDSON'S ERIN 16R ET 20W
DLF IEF HYF P C02978324

HARVIE RAFTSMAN 16R DLF IEF HYF
HAROLDSON'S 37H MIRA ET 62K

CE: -0.9 BW: 3.9 WW: 50.6 YW: 84.3 MM: 24.3 TM: 49.6

BW: 90 lbs.

This direct daughter of 45P will make a lot of friends. She is a powerful heifer with added look. Her Raftsman/Mira mother is proving she has the ability to hit "home runs." This one will go from the show pen to the donor pen.



ERIN 45P 20A

LOT 44

HAROLDSON'S *Jessica* ET 25A

FEMALE PENDING AFSY 25A MAR 3, 2013

TH 89T 743 UNTAPPED 425X ET
DLF IEF HYF PC02960411

CRR ABOUT TIME 743 DLF IEF HYF
TH 16G 20N GEMINI 89T DLF IEF HYF

TL 5073 JESSICA 751U
DLF IEF HYF PC02913169

SR CG HARD ROCK 5073
TT PETUNIA 128P DLF IEF HYF

(PE)

CE: -1.2 BW: 3.7 WW: 53.8 YW: 90.2 MM: 22.8 TM: 49.7

This Untapped daughter is very long sided with a beautiful front end. She is a very high performing heifer that will handle competition. Her mother, 751U is a tremendous female.



JESSICA ET 25A

LOT 45

HAROLDSON'S *Electra* 92Y 63A

FEMALE PC02982003 AFSY 63A MAR 23, 2013

HAROLDSONS YOUNG GUN 4T 92Y
DLF IEF HYF P C02957236

HAROLDSON'S WLL ANCHOR 4T
HAROLDSON'S BP EMERALD 122L 9R

HAROLDSON'S ELECTRA 29F 4R
P C02874761

CS BOOMER 29F DLF IEF HYF
HAROLDSON'S WLC MADONNA ET 8N

CE: 0.8 BW: 4.6 WW: 55.3 YW: 96.3 MM: 20.4 TM: 48.1

BW: 90 lbs.

This female is young but has a lot of power and shape. Study this pedigree, there is a lot of maternal punch here. A maternal sister was purchased by River Valley last year and reports are she turned out great! Don't overlook this one.



ELECTRA 92Y 63A

ELECTRA 102Y



Maternal Sister to Lot 45

ERIN 425X 16Z



LOT 46

Haroldson's *Erin* 425X 16Z

FEMALE PC02978445 AFSY 16Z Feb 24, 2012

TH 89T 743 UNTAPPED 425X ET
DLF IEF HYF P C02960411

CRR ABOUT TIME 743 DLF IEF HYF
TH 16G 20N GEMINI 89T DLF IEF HYF

HAROLDSON'S ERIN 16R ET 20W
DLF IEF HYF P C02978324

HARVIE RAFTSMAN 16R DLF IEF HYF
HAROLDSON'S 37H MIRA ET 62K

CE: -0.7 BW: 3.5 WW: 55.0 YW: 89.7 MM: 16.5 TM: 44.0

BW: 80 lbs.

This Untapped daughter is very big middled and bold sprung. She is very complete made and has a tremendous look. She would handle some competition this fall. She is a maternal sister to 20A Lot 42.

Bred to TH 122 711 Victor 521X ET on May 8, 2013.

Exposed to Haroldson's WLC Reno ET 15W June 2 to August 20, 2013.

LOT 47

Haroldson's *Ariel* 4T 6Z

FEMALE PC02968280 AFSY 6Z Feb 16, 2012

HAROLDSON'S WLL ANCHOR 4T
P C02901004

REMITALL GOVERNOR 236G
HAROLDSON'S 37H MIRA ET 62K

HAROLDSON'S ARIEL 57G ET 59S
P C02889710

RU 20X BOULDER 57G DLF IEF HYF
SBS ETTE 2E

CE: 2.5 BW: 2.0 WW: 44.1 YW: 77.3 MM: 17.2 TM: 39.3

BW: 72 lbs.

This Anchor daughter is very powerful with a massive body and lower third. She is very feed efficient and has a lot of strength in her pedigree.

Bred to Haroldson's Liner 521X 12Z on May 20, 2013.

Exposed to Haroldson's WLC Reno ET 15W June 2 to August 20, 2013.

ARIEL 4T 6Z



LOT 48

HAROLDSONS *Valerie* 45P 17Z

FEMALE PC02968284 AFSY 17Z Feb 24, 2012

NJW FHF 9710 TANK 45P
DLF IEF HYF P C02924181

FHF 8403 STARBUCK 19H
GV 579 VICTORIA 9710

MHPH MS 10H VALERIE 108M
P C02807790

MSU STAR HEADLINER
JSF 38 VALERIE 40J

CE: -1.0 BW: 4.6 WW: 43.1 YW: 70.9 MM: 23.6 TM: 45.2

BW: 85 lbs.

A real long bodied heifer with great cosmetics. The Tank 45P females are super mother cows.

Bred to TH 122 71I Victor 521X ET on May 8, 2013.

Exposed to Haroldson's WLC Reno ET 15W June 2 to August 20, 2013.



VALERIE 45P 17Z

LOT 49

HAROLDSONS *Lucy* 521X 29Z

FEMALE PC02968294 AFSY 29Z MAR 8, 2012

TH 122 71I VICTOR 521X ET
DLF IEF HYF P C02963602

DRF JWR PRINCE VICTOR 71I
KBCR 19D DOMINETTE 122 DLF IEF

HAROLDSON'S LUCY T100 80X
P C02946283

SHF TAHOE R117 T100
HAROLDSON'S LUCY LU 2Z ET 47L

CE: 4.8 BW: 0.8 WW: 54.6 YW: 85.6 MM: 20.1 TM: 47.4

BW: 64 lbs.

This 521X daughter is a really nice correct made female with extra style. I think these 521X females will be great females.

Bred to TH 89T 743 Untapped 425X ET on May 29, 2013.

Exposed to Haroldson's WLC Reno ET 15W June 15 to August 20, 2013.



LUCY 521X 29Z

LOT 50

HAROLDSONS *Helena* 425X 36Z

FEMALE PC02968296 AFSY 36Z MAR 14, 2012

TH 89T 743 UNTAPPED 425X ET
DLF IEF HYF P C02960411

CRR ABOUT TIME 743 DLF IEF HYF
TH 16G 20N GEMINI 89T DLF IEF HYF

HI-CLIFFE 10F HELENA 18H
P C02711777

HI-CLIFFE 46B FIRECRACKER 10F
HI-CLIFFE TF ELLIPSE 167E

CE: -0.5 BW: 4.3 WW: 41.4 YW: 69.8 MM: 13.4 TM: 34.1

BW: 94 lbs.

Here is an Untapped daughter that is easy on the eyes. She is long sided with that extra extension to her front end. There should be added longevity, take note of the age of her dam.

Bred to TH 122 71I Victor 521X ET on May 30, 2013.

Exposed to Haroldson's WLC Reno ET 15W June 15 to August 20, 2013.



HELENA 425X 36Z

MARVEL T100 62Z



LOT 51 HAROLDSONS HLV *Marvel* T100 62Z
 FEMALE PC02968303 AFSY 62Z MAR 31, 2012

SHF TAHOE R117 T100 SHF RIB EYE M326 R117 DLF IEF HYF
 P C02933797 SHF LADY 512 L73

HAROLDSON'S MARVEL 45P 5W NJW FHF 9710 TANK 45P DLF IEF HYF
 P C02933799 REMITALL MARVEL 190S

CE: -1.1 BW: 4.8 WW: 57.1 YW: 93.5 MM: 25.9 TM: 54.5

BW: 88 lbs.

Marvel is a big bodied, moderated framed, easy doing Tahoe daughter. Study this pedigree, it is stacked with maternal greats. Real cow prospect here!

Bred to TH 122 711 Victor 521X ET on May 6, 2013.

Exposed to Haroldson's WLC Reno ET 15W June 2 to August 20, 2013.

RACHEL T100 67Z



LOT 52 HAROLDSONS *Rachel* T100 67Z
 FEMALE PC02968305 AFSY 67Z APR 2, 2012

SHF TAHOE R117 T100 SHF RIB EYE M326 R117 DLF IEF HYF
 P C02933797 SHF LADY 512 L73

HAROLDSON'S RACHEL 42H 19K HAROLDSON'S 8E SABRE ET 42H
 P C02773952 HAROLDSON'S CAYLEY 74U 20H

CE: 0.0 BW: 5.2 WW: 56.6 YW: 96.0 MM: 17.4 TM: 45.7

BW: 90 lbs.

Another Tahoe daughter. This female should be an excellent producer. Her mother is tight uddered and very milky. Brooks Farms has a maternal sister.

Bred to TH 122 711 Victor 521X ET June 3, 2013.

Exposed to Haroldson's WLC Reno ET 15W June 24 to August 20, 2013.

CARLA 120X 54Z



LOT 53 HAROLDSON'S *Carla* 120X 54Z
 FEMALE PC02985824 AFSY 54Z MAR 25, 2012

MHPH 40U INSPECTOR 120X WLB SHAPELY 50S 40U
 DLF IEF HYF P C02940438 MHPH MS 29F NITA 112L DLF IEF HYF

HAROLDSON'S CARLA 11P 37U HAROLDSON'S ROBUST 005 11P
 P C02934378 GHC MISS CARLA ET 40N

CE: -1.2 BW: 7.2 WW: 57.9 YW: 102.1 MM: 16.1 TM: 45.1

BW: 98 lbs.

A high performing heifer that is really long sided. Her mother has been an excellent producer.

Exposed to Haroldson's WLC Reno ET 15W June 2 to August 20, 2013.

LOT 54

HAROLDSONS ANL *Sarah* 120X 92Z

FEMALE PC02970341 AFSY 92Z May 4, 2012

MHPH 40U INSPECTOR 120X
DLF IEF HYF P C02940438

WLB SHAPLEY 50S 40U
MHPH MS 29F NITA 112L DLF IEF HYF

HAROLDSON'S SARAH 122L 22R
P C02872177

REMITALL ONLINE 122L
HAROLDSON'S SARAH 2Z 29D

CE: 2.4 BW: 3.9 WW: 51.3 YW: 91.2 MM: 16.5 YW: 42.2

BW: 82 lbs

Sarah is a real nice Inspector daughter. She has added look and is very complete made. She will make a terrific cow.

Bred to TH 122I Victor 521X ET on May 8, 2013. Exposed to Haroldson's WLC Reno ET 15W June 2 to August 20, 2013



SARAH 120X 92Z

LOT 55

HAROLDSONS *Lexy* T100 85Z

FEMALE PC02968314 AFSY 85Z Apr 15, 2012

SHF TAHOE R117 T100
P C02933797

SHF RIB EYE M326 R117 DLF IEF HYF
SHF LADY 512 L73

SHORTY-CROFT LEXY 35L
P C02781791

HAROLDSON'S PRINGLE 20X 12G
ROCKY-V 1W STARLET 71A

CE: -2.0 BW: 4.0 WW: 54.6 YW: 91.0 MM: 14.7 TM: 42.0

BW: 84 lbs.

This Tahoe daughter is bold sprung with extra capacity.

Exposed to Haroldson's WLC Reno ET 15W June 2 to August 20, 2013.



LEXY T100 85Z

LOT 56

HAROLDSONS *Density* T100 34A

MALE PC02981987 AFSY 34A MAR 6, 2013

SHF TAHOE R117 T100
P C02933797

SHF RIB EYE M326 R117 DLF IEF HYF
SHF LADY 512 L73

HAROLDSON'S WLC MIRA ET 30U
P C02934377

REMITALL PATRIOT ET 13P
HAROLDSON'S 37H MIRA ET 62K

CE: -1.6 BW: 4.3 WW: 62.6 YW: 104.4 MM: 19.1 TM: 50.4

BW: 96 lbs.

Here is an opportunity to get a direct son of Tahoe. This bull is real stout made with that extra shape to his quarter and stifle. He has that extra pigment and is a very complete made package. His mother is a heavy milking Patriot/Mira daughter.

His females will be impeccable.



DENSITY T100 34A

Cobalt ET 18A



We are extremely happy with the results of this flush. Both these individuals are big ribbed and easy doing with that added dimension and muscle shape.

These bulls are dark colored with that added pigment. These will be low birth solutions without sacrificing performance.

Take note of the 67 pound birth weight on 18A. Mira 62K has been the best breeding tool we have ever worked with; ability to consistently produce offspring with added quality is unmatched.

Terms to be announced.

LOT 57

HAROLDSON'S WLC *Cobalt* ET 18A
 MALE PENDING AFSY 18A FEB 27, 2013

LOT 58

HAROLDSON'S WLC *Update* ET 57A
 MALE PENDING AFSY 57A MAR 20, 2013

BW: 67 lbs.

MCCOY 55M ABSOLUTE 49S
 DLF IEF HYF P C02884130

HAROLDSON'S 37H MIRA ET 62K
 P C02777365

MCCOY 3J MATADOR 55M
 MCCOY 58G CONNIE 119L

REMITALL HOLLYWOOD 37H
 HAROLDSON'S CU DESTINY 2Z 19G

BW: 90 lbs.

(PE)
 CE: 3.3 BW: 2.2 WW: 52.8 YW: 94.2 MM: 14.7 TM: 41.1

Here are two flush brothers out of our main donor cow Mira.

Update ET 57A





Notes



TERMS:

The terms of the sale are cash or cheque, payable at par at the sale location. The right of property shall not pass until after settlement has been made; no invoicing on buyers in attendance unless previous arrangements have been made. Every animal sells to the highest bidder and in cases of disputes, the auctioneer's decision will be final. Announcements from the auction block will take precedence over the printed matter in the catalogue. Current exchange rates will be announced sale day. All monies are in Canadian funds.

CERTIFICATE of REGISTRATION:

Each animal will carry papers issued by the Canadian Hereford Association. A certificate of registry duly transferred will be furnished to the buyer for each animal after payment has been made.

HEALTH:

All animals in the sale have met all necessary health requirements.

GUARANTEE:

Each animal becomes the purchaser's risk immediately after the animal is sold. All animals in this sale will be sold under the terms and guarantees set forth by the Canadian Hereford Association with regard to health, freedom from defects and from both reproductive and specific genetic unsoundness.

PREGNANCY INFORMATION:

All serviceable age females have been pregnancy examined by an accredited veterinarian, giving an estimated length of gestation. This estimated gestation period shall be used only as a guideline to calving and is not a guarantee of actual service.

Liabilities:

All persons attend the sale at their own risk. The seller, facility owner and sale manager assume no liability legal or otherwise, for any accidents that occur. It is understood that T Bar C Cattle Co. Ltd. is acting only as a medium between buyer and seller and is not responsible for any failure on the part of either party to live up to his obligations. Neither does T Bar C Cattle Co. Ltd. assume any financial obligations to collect or enforce collection of any monies between parties and any legal action that may in exceptional cases be taken must be between the buyer and the seller. T Bar C Cattle Co. Ltd. assumes no responsibility for any credit extended by the seller to the buyer. The buyer must look to the seller for fulfillment of all guarantees and representations made hereunder.

DELIVERY:

Every assistance will be given in getting your purchases home. Each animal becomes the risk of the purchaser as soon as sold.

PHONE, Mail, Wire Bids:

Bidders unable to attend the sale may phone, wire or mail their bids and instructions to the sale manager, auctioneer or special representatives. Bids must be received in sufficient time prior to the sale.

INSURANCE:

We strongly recommend that insurance is purchased for full value.

ERRORS:

All announcements at sale time, written or oral, supercede any written material in the catalogue.



Return Undeliverable
Canadian Addresses To:

T Bar C Cattle Co. Ltd.
4-3342 Millar Avenue
Saskatoon, SK S7K 7G9



Haroldson's Polled Herefords
Premier Breeder 2011 Canadian Western Agribition
Premier Breeder & Exhibitor
2012 Canadian Western Agribition



Haroldson's Temption 425X 78Z
Agribition Junior Division Champion Heifer Calf
Sold to Hoffman Ranch, Theftord, Nebraska



Agribition Reserve Junior Champion Bull
Haroldson's Young Gun 4T 92Y



TDP Crossover Z400
Reserve Junior Bull Calf Champion
National Western Stock Show 2013
for Terry Powesland
Grandmother of Crossover was purchased at
Blair Athol/Haroldson's and Friends Sale 1999



Blair Athol Lite My Fire 42Z
2nd in class at Junior National Bonanza
All Breeds Champion at Yorkton Regional for
Kaitlyn Polegi
Purchased at Blair Athol/Haroldson's and Friends Sale 2012



Blair Athol Pound Penny 4Z
Class winner at Junior National Bonanza
Reserve Division Champion, Oxford, Nova Scotia
for Wyatt Oulton
Purchased at Blair Athol/Haroldson's and Friends Sale 2012



Blair-Athol 3W Shasta 40Z
Red Coat Classic \$10,000 pick for Kate Webb
Many times Champion



Blair Athol 101 Peach 9Z
2nd in Class at Junior National Bonanza
Champion Female, Woodville 4-H Beef Club
for Cassandra Gorrill
Purchased at Blair Athol/Haroldson's and Friends
Sale 2012



Blair Athol Buddy
Champion Overall Market Steer
Junior National Bonanza
for Kylee Dixon