

BLAIR-ATHOL HAROLDSONS

Friends

Mil-WRAY, Old BURCHILL, ROSELAWN, Til-Toba Polled Herefords



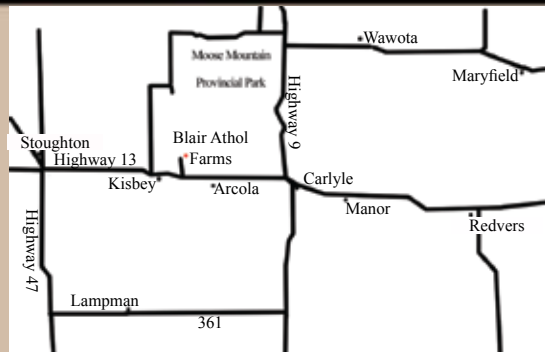
21ST
OCTOBER
2012

ARCOLA,
SASKATCHEWAN

BLAIR-ATHOL HAROLDSONS

Friends

1:00 p.m. SUNDAY, OCTOBER 21, 2012
AT THE FARM, ARCOLA, SK



BLAIR ATHOL



Blair Athol Farms
The Lees Family
Box 386, Arcola, SK SOC OGO
blairatholfarms@sasktel.net
www.blairatholfarms.com

Duncan & Val
Ph/fax: 306-455-2619
Cell: 306-577-9703
Jeff, Grace, Christin, Kylee & Jackson
Ph: 306-455-2128
Cell: 306-577-1375
Jarrett
Ph: 306-891-9719

4 miles west of Arcola,
3 miles north on RR #2052
4 miles east of Kisbey,
3 miles north on RR #2052

HAROLDSON'S



Haroldson's Polled Herefords
Lenna, Kristy, Chad Wilson
Box 372, Wawota, SK SOG 5A0
Ph: 306-739-2643 Fax: 306-739-2902
Cell: 306-577-1256
chad_wilson79@hotmail.com
www.haroldsons.com

MIL-WRAY



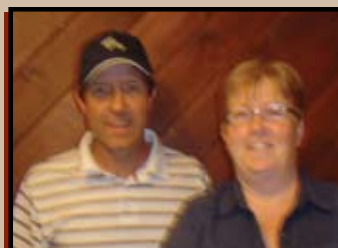
Mil-Wray Polled Herefords
Don & Wanda Wray & Family
Box 75, Tilston, MB ROM 2B0
Ph: 204-686-2295
Email: wwray@advantagecoop.ca

ROSELAWN



Roselawn Polled Herefords
Wally & Jackie Mitchell & Family
Box 782, Killarney, MB ROK 1G0
Ph: 204-523-8713
C: 204-534-8204
Fax: 204-523-5668
Email: jmitchell@goinet.ca

TIL-TOBA



Til-Toba Polled Herefords
Ken & Judy Wray & Family
Box 65, Tilston, MB ROM 2B0
Ph/fax: 204-686-2289
Cell: 204-522-6117
Email: tiltoba@yahoo.com

OLD BURCHILL



Old Burchill Farm
Greg & Sentura Freitag
Box 73, Alameda, SK SOC OCO
Ph: 306-489-4500
Cell: 306-485-9044
Melvin & Bonnie Freitag
Ph: 306-453-2007
Email: freitag.obf@xplornet.ca

BE A PART OF THE SASKATCHEWAN SWEEP "STEAKS"

Saturday, October 20 – ANL Polled Herefords & Guests Sale – 12:00 Noon
Saturday, October 20 – C & T "Take The Next Step" Sale – 5:00 p.m.
Sunday, October 21 – Blair-Athol/Haroldson's & Friends – 1:00 p.m.
Monday, October 22 – Square-D Annual Production Sale – 1:00 p.m.

THE WINTERING & JUNIOR PROGRAM

Why not let us look after your bull calf purchase until spring of 2013 for a fee of \$400.00. Juniors wishing to leave Bonanza 2013 purchases...make arrangements with the consignors. We'll make sure the deal will be very good! We do require that you purchase insurance for full value and that payment for bull wintering is done at the time of settlement.



VIEW THE CATALOGUE ONLINE AT www.buyagro.com

From the desk at T Bar...

How many of you have been to a "good old fashioned" barn raising? Well truly, the barn is built but we could not call it a "house warming." On October 21st, there are a lot of new things happening. A new location, Arcola, Saskatchewan, at the home of Blair Athol where a century of history has been made and a new facility. The boys at Blair Athol have had a busy summer full of excitement.

The most excitement is in the lineup of seed stock offered at this sale. There is a factor of a competitive nature in the offering of calves (both male and female) this year, as several of these calves will be candidates for the National Show at Canadian Western Agribition and let's not forget that Brandon is hosting Bonanza in 2013. The strength of the bred heifers at this event has become a tradition and that tradition is maintained. Deep, roomy females carrying new and exciting services giving the new owners an opportunity to benefit through that first calf. Opportunities abound in this dynamic sale offering.

Over the past decade or two, your hosts Duncan, Val and the boys, along with Chad from Haroldsons and friends... Wrays, Mitchells and Freitag's have proven that they produce the "kind" that work. Throughout our travels, we often get to see the results of cattle that have been selected through this long standing event ...simply because they are good, sound, fertile, productive and not hard to spot. We know what the future holds; therefore, adding quality to your program is strictly good business sense.

The "Sweep Steaks" weekend is a fun filled few days, with outstanding seed stock and exceptional hospitality. Plan to be with us for another "new Hereford experience."

If we, at T Bar C, may be of any assistance, prior to or sale, do not hesitate to give Chris or myself a call.

See you at Blair Athol

Ted



Sale Management
 T Bar C Cattle Co. Ltd.
 Ted & Mina Serhienko
 Chris Poley
 4-3342 Millar Avenue
 Saskatoon, SK S7K 7G9
 Ph: 306-933-4200
 Fax: 306-934-0744
 info@tbarc.com
 www.tbarc.com

Sale Day Phones

Ted's cell 306-221-2711
 Chris cell 306-220-5006

Sale Staff

Dale Stith
 Auctioneer 918-760-1550
Chris Poley
 Auctioneer 306-220-5006
Ted Serhienko
 T Bar C 306-221-2711
Craig Flewelling
 Flewelling Cattle Co. 403-556-0515
Joe Palsson
 Livestock Services 613-897-3417
Marc Hotchkiss
 Hereford America 605-490-1513
Levi Landers
 Hereford World 308-730-1396

Hotel Accommodations

Days Inn, Estevan, SK 306-634-6456
 Perfect Inn & Suites, Estevan, SK 306-634-8585
 Kenosee Inn, Kenosee, SK 306-577-2099
 Bear Claw Casino & Hotel, Carlyle, SK 306-577-4588
 Ramada, Carlyle, SK 866-654-7128 or 306-453-2686
 Western Star Inns & Suites, Carlyle, SK 306-453-2700
 Chaparral Inn, Arcola, SK 306-455-2275
 Poplar Tree Inn, Stoughton, SK 306-457-3540

*Please call directly to the accommodation of your choice.

REMEMBER ACCOMMODATIONS ARE AT A
 PREMIUM – SO BOOK EARLY!

PLEASE JOIN US FOR LUNCH SALE DAY!

PLEASE BRING THIS CATALOGUE WITH YOU TO THE SALE

Sale Representatives

Canadian Hereford Association
 Randy Radau, President
 Burt Grundy, Vice President
 Gordon Stephenson, General Manager

Saskatchewan Hereford Association
 Doug Mann, President
 Karen Lischka, Vice President
 Marilyn Charlton, General Manager

Manitoba Hereford Association
 Andrew Kopeechuk, President
 Brent Blaine, Vice President
 Stephanie Kopeechuk, Secretary Manager

This group of heifer calves is definitely the most impressive group we have ever assembled for our production sale. It is hard to grade them, as they all have some real positive attributes in their own right. All ten have the potential to show, depending on what day and who is doing the sorting. We will definitely want to take some to Agribition. We know we can't take them all, so those decisions will be finalized with the new owner's blessing, after the sale.

Pound Penny 4Z



LOT 1

Blair-Athol *Pound Penny* 4Z

FEMALE PC02970402 DVL 4Z JAN 16, 2012

REMITALL LAGRD POUNDER ET 204P
P C02851723

REMITALL HIGHWAY ET 157H
REMITALL CATALINA 24H

EJM ULAN 21R 26U
P C02914244

EJM RODERICK 201N 21R
EJM MISS LUCKY SEVEN 89H 7K

(PE)

CE: -6.2 BW: 6.3 WW: 48.0 YW: 76.5 MM: 14.9 TM: 38.9

BW: 88 lbs.

We purchased Pound Penny 4Z in dam out of the EJM dispersal. She turned out super. This heifer is so stout, with lots of top. She will make you look. Her dam has a beautiful udder and our experience with Pounder indicates she will be sensational. I expect her to get to town more than once because when she gets fixed up, she will be hot!

Peach 9Z



LOT 2

Blair-Athol 101 *Peach* 9Z

FEMALE PC02970060 DVL 9Z FEB 15, 2012

BLAIR-ATHOL 13K MAJOR 101N
DLF IEF HYF P C02849990

BLAIR-ATHOL 65F ON LINE 13K
BLAIR-ATHOL 25C AMIGA 20K

GHC MISS PEACHES 93W
P C02943354

LAMPOR'S 562B RHINESTONE 99R
GHC MISS BUTTERCLIP ET 110S

(PE)

CE: 0.4 BW: 4.3 WW: 46.0 YW: 77.2 MM: 22.4 TM: 45.4

BW: 95 lbs.

As good a "Major" as we have ever sold. Not too many holes in this girl. She looks good from any angle; freckle faced and pigmented. Her dam, Peaches 93W, was purchased from Crittendens in 2010 and is out of a full sister to the Volume bulls that have made such an impact. **Sale feature!**

Specialty 11Z



LOT 3

Blair-Athol 202 *Specialty* 11Z

FEMALE PC02970401 DVL 11Z FEB 18, 2012

RU BA NO LIMIT 202W
DLF IEF HYF P C02927886

REMITALL ROUTE 66 ET 346R
REMITALL EXCEL 2S

BLAIR-ATHOL 101 ADA 16W
P C02927888

BLAIR-ATHOL 13K MAJOR 101N DLF IEF HYF
MEADOW-ACRES 62P ADA 40T

(PE)

CE: -4.7 BW: 7.2 WW: 55.4 YW: 95.1 MM: 21.7 TM: 49.4

BW: 90 lbs.

Pretty as a picture and structurally as good as it gets. Her dam, 16W, is a Major three year old admired by all who see her. Coming out of the great Ada family that is a cornerstone of the Meadow Acres program.

LOT 4

Blair-Athol 3W *Fanny* 23Z

FEMALE PC02970057 DVL 23Z Feb 23, 2012

NBG 69T THE WONDERER 36R ET 3W HARVIE TRAVELER 69T DLF IEF HYF
DLF IEF HYF P C02927066 BLAIR-ATHOL 20 GRETCHEN ET 36R

BLAIR-ATHOL 13P GINGER ET 40T REMITALL PATRIOT ET 13P
P C02900787 BLAIR-ATHOL FUTURE FANNY 9J

(PE)
CE: -5.5 BW: 6.3 WW: 55.3 YW: 93.6 MM: 22.6 TM: 50.3

BW: 108 lbs.

Big performance heifer calf here. Depth, pounds and broodiness best describe Fanny 23Z. Her grandma is the great donor dam for Remitall and AI Toles, Future Fanny 9J. A maternal sister, 7Y, was sold in last year's sale to Lois Batty for \$3500.00. 7Y was recently named Grand Champion Female at Stirling Banner Show for the Ontario East Central Hereford Zone.



FANNY 23Z

LOT 5

Blair-Athol 161 *Emily* 24Z

FEMALE PC02970056 DVL 24Z Feb 23, 2012

REMITALL HEATER 161U BNMHPH 13P HEAT 101S DLF IEF HYF
DLF IEF HYF P C02909574 RU 2M DEBRA 141P

BLUE-DOVE CLEO 10T MHCVB 68M PROWLER 118P
P C02908660 BNC 4L CLEO 2N

(PE)
CE: -1.1 BW: 4.7 WW: 48.2 YW: 77.2 MM: 19.6 TM: 43.8

BW: 100 lbs.

A big, strong, Heater daughter out of a hard working Prowler daughter. 24Z is long spined with lots of thickness. Don't over look this heifer. She has a great future!



EMILY 24Z

LOT 6

Blair-Athol 70X *Denise* 27Z

FEMALE PC02971392 DVL 27Z Feb 24, 2012

STAR MARKET INDEX 70X ET RVP STAR 533P CAN-AM ET 57U
DLF IEF HYF P C02965481 NUW 29M INVESTOR GAL 129R DLF IEF HYF

DS PURE RONDA 10X BLAIR-ATHOL PURE LUCK 61S
P C02970356 CS GPR RONDA 30S

(PE)
CE: -1.1 BW: 5.1 WW: 49.1 YW: 83.7 MM: 22.6 TM: 46.9

BW: 77 lbs.

One of two Market Index heifer calves to sell. The first to sell in Canada! Thanks to Harvey Duke for allowing us to use this bull; the calves have all been good. 27Z is very stout, coming out of a nice milking two year old we purchased from Stockdales in Pennsylvania.



DENISE 27Z

LOVE POTION 35Z



LITE MY FIRE 42Z



PINK 49Z



WILD THANG 84Z



LOT 7

Blair-Athol *Love Potion* 35Z

FEMALE PC02970398 DVL 35Z Feb 28, 2012

STAR MARKET INDEX 70X ET RVP STAR 533P CAN-AM ET 57U
DLF IEF HYF P C02965481 NJW 29M INVESTOR GAL 129R DLF IEF HYF

BLAIR-ATHOL 13K SALLY ANN 118S BLAIR-ATHOL 65F ON LINE 13K
P C02895698 WIN-DEL ANN 87J

(PE)
CE: -1.5 BW: 4.6 WW: 45.7 YW: 78.5 MM: 21.7 TM: 44.6

BW: 102 lbs.
Our other Market Index heifer calf. This one is red eyed, long sided and really fancy. Cow power with enough class to show. A Maternal sister was purchased by Brooks Farms in 2011 and is doing a wonderful job.

LOT 8

Blair-Athol *Lite My Fire* 42Z

FEMALE PC02970049 DVL 42Z MAR 5, 2012

UPS TCC NITRO 1ET GH NEON 17N
DLF IEF HYF P C02941111 LCC TWO TIMIN 438 ET

DTHF SAFRONE 29S GNF 122L LINEDRIVE ET 56N
P C02892497 DTHF MATILDA 123M

(PE)
CE: 1.2 BW: 3.8 WW: 48.2 YW: 84.3 MM: 8.7 TM: 32.9

BW: 84 lbs.
Lite My Fire might just be the best show heifer we are selling. A Nitro that is thick, deep and soft made. She just might light a few fires.

LOT 9

Blair-Athol 19M *Pink* 49Z

FEMALE PC02971358 DVL 49Z MAR 9, 2012

BLAIR-ATHOL 20 THE ROCK ET 19M REMITALL KEYNOTE 20X
P C02816335 MHR 35A HAZEL 54A 18D

MICGIL'S RAY-LENE 36N 36T K-COW NACHO MAN ET 36N DLF IEF HYF
P C02905671 MICGIL'S RAY-LENE 37H 1M

(PE)
CE: -4.8 BW: 6.5 WW: 58.6 YW: 97.7 MM: 16.6 TM: 45.9

BW: 102 lbs.
A "Rock" out of the lead off cow in the McGil dispersal. Her Nacho Man momma is a beautiful cow. We need more "Rocks," they are that good. The trouble is that they are hard to keep, as they always stand out. 49Z will get better every day you own her and she's darn good right now.

LOT 10

Blair-Athol 53U *Wild Thang* 84Z

FEMALE PC02970050 DVL 84Z APR 7, 2012

BLAIR-ATHOL CLASSIC 53U MHCVB 68M PROWLER 118P
P C02916096 RU 65F KIMBERLY 31K DLF IEF HYF

BLAIR-ATHOL 6L DEANNA 30S RU 25C LEE 6L
P C02885094 BLAIR-ATHOL 664 DEANNA 14D

CE: 1.9 BW: 3.8 WW: 43.8 YW: 75.6 MM: 19.4 TM: 41.3

BW: 88 lbs.
Every year we get requests for an April heifer to show in the younger classes. I believe Wild Thang fills the bill. She is long spined, hooked onto a beautiful front, muscle from end to end and balanced perfectly. I love this female and predict a great future for her. A maternal sister to the feature bred, 106Y, Lot 22.

LOT 11

Blair-Athol 118P *Carla 1Y*

FEMALE PC02957311 DVL 1Y JAN 12, 2011

MHCVB 68M PROWLER 118P
P C02848089

STAR AMERICA BNMHPH SS MKS 68M DLF IEF HYF
DS 23C KATE 2K

LIAN 49S WINTER 107W
P C02927608

MCCOY 55M ABSOLUTE 49S DLF IEF HYF
GHC MISS LASSIE 50M

CE: 5.0 BW: 1.4 WW: 37.6 YW: 67.7 MM: 16.2 TM: 35.0

BW: 76 lbs.

These Prowler females have been outstanding! Carla 1Y came in dam from Wally and Fern Pugh, going back to a great cow family at GHC. Pigmented with some muscle, she will work! Exposed to Remitall Heater 161U from May 14 to August 6, 2012.



Carla 1Y

LOT 12

Blair-Athol 61S *Purity 22Y*

FEMALE PC02957289 DVL 22Y MAR 2, 2011

BLAIR-ATHOL PURE LUCK 61S
P C02885108

MHCVB 68M PROWLER 118P
BLAIR-ATHOL 20X BETTE 926K

BLAIR-ATHOL ANN MARGRET 22R
P C02868114

REMITALL HOLLYWOOD 37H
BLAIR-ATHOL 20X LISA 48G

CE: -3.2 BW: 6.8 WW: 49.9 YW: 92.4 MM: 11.4 TM: 36.4

BW: 108 lbs.

The only Pure Luck in this year's sale. She is really stout; the kind that can get it done with a minimum of expensive feed. Exposed to Blair Athol 6 Solid 131T from May 19 to August 8, 2012.



Purity 22Y

LOT 13

Blair-Athol *Country Kate 23Y*

FEMALE PC02966067 DVL 23Y MAR 2, 2011

REMITALL ONLINE 122L
P C02789138

REMITALL EMBRACER 8E
REMITALL CATALINA 24H

REMITALL-WEST COUNTRY 31W
P C02926478

REMITALL ROUTE 66 ET 346R
REMITALL COUNTRY GIRL 300L

CE: 0.1 BW: 3.7 WW: 49.8 YW: 86.7 MM: 17.6 TM: 42.5

BW: 83 lbs.

Not too many chances to buy "Online 122L" daughters. Have you tried to buy semen lately? This female has some room and capacity. She looks like a cow. Bred to our new outcross herd sire "Plainsman," her calf should be exciting! Bred to Square D Plainsman 946Y on May 17, 2012. Projected calving date is February 25, 2013.



KATE 23Y

CHRISSEY 30Y



NANCY 44Y



CHELSEY 63Y



ROSIE 70Y



LOT 14

Blair-Athol *53 Chrissy 30Y*

FEMALE PC02957335 DVL 30Y MAR 7, 2011

BLAIR-ATHOL CLASSIC 53U MHCVB 68M PROWLER 118P
 P C02916096 RU 65F KIMBERLY 31K DLF IEF HYF

BLAIR-ATHOL 101 GRACE 91W BLAIR-ATHOL 13K MAJOR 101N DLF IEF HYF
 P C02930305 BLAIR-ATHOL 20X MARTINA 65K

CE: -2.6 BW: 6.4 WW: 53.4 YW: 92.2 MM: 23.0 TM: 49.7

BW: 88 lbs.
 If you can get a "Classic" bred, I would recommend you do it; they are outstanding! A bull, I believe, will be worth more with every daughter that comes into production. Chrissy 30Y is out of a "Major" daughter, going back to Jeff's original WTK cow. She is dark colored, pigmented, with style. Bred to Blair Athol Braveheart 43X on June 21, 2012. Projected calving date is April 1, 2013.

LOT 15

Blair-Athol *Solid Nancy 44Y*

FEMALE PC02957307 DVL 44Y MAR 11, 2011

BLAIR-ATHOL 6 SOLID 131T RU 25C LEE 6L
 P C02908586 BLAIR-ATHOL 20 GRETCHEN ET 36R

BLAIR-ATHOL 13K FROSTY 28W BLAIR-ATHOL 65F ONLINE 13K
 P C02930302 NBG 122L GRETA 51M 16R

CE: 2.7 BW: 2.5 WW: 45.6 YW: 76.4 MM: 18.6 TM: 41.4

BW: 80 lbs.
 Any one old enough to remember, should know 44Y is a direct descendant of Verlou Frosty, one of the greatest cows ever in the Verlou program. All the females in this family have been hard workers, with beautiful udders. She is the only female selling bred to the cow maker, "Major." Bred to Blair Athol 13K Major 101N on May 31, 2012. Projected calving date is March 11, 2013.

LOT 16

Blair-Athol *Solid Chelsey 63Y*

FEMALE PC02957312 DVL 63Y MAR 23, 2011

BLAIR-ATHOL 6 SOLID 131T RU 25C LEE 6L
 P C02908586 BLAIR-ATHOL 20 GRETCHEN ET 36R

BLAIR-ATHOL BD CHOOSIE 125W BLAIR-ATHOL BOND DIRECT 103P
 P C02936840 BLAIR-ATHOL 20X CHOOSIE 11F

CE: 3.1 BW: 0.2 WW: 39.9 YW: 65.8 MM: 18.6 TM: 38.6

BW: 68 lbs.
 What a sweetheart! Chelsey 63Y is smaller than some but deep ribbed and pretty. She will make a great brood cow! Bred to Blair Athol Classic 53U on June 21 and exposed to him from June 21 to August 7, 2012. Projected calving date is April 1, 2013.

LOT 17

Blair-Athol *Classy Rosie 70Y*

FEMALE PC02957290 DVL 70Y MAR 27, 2011

BLAIR-ATHOL CLASSIC 53U MHCVB 68M PROWLER 118P
 P C02916096 RU 65F KIMBERLY 31K DLF IEF HYF

RU 67N ROSIE 25R RU 65F NEXT IN LINE 67N
 P C02876074 RU 65F MAE 25N

CE: -1.2 BW: 4.6 WW: 50.8 YW: 82.6 MM: 24.5 TM: 49.9

BW: 92 lbs.
 Duncan's pick! I can't wait to see this female in production. Red eyed, sweet fronted, deep ribbed and solid. Her udder will be flawless. A definite sale feature! Exposed to Remital Heater 161U from May 14 to August 6, 2012.

LOT 18

Blair-Athol 161 *Kelsey* 71Y

FEMALE PC02957314 DVL 71Y MAR 27, 2011

REMITALL HEATER 161U BNMHPH 13P HEAT 101S DLF IEF HYF
DLF IEF HYF P C02909574 RU 2M DEBRA 141P

RU 1K KELSEY 3M FCC 15D LEVI 1K
P C02819440 EAGLE 7C KELSEY 9K

CE: -3.5 BW: 6.6 WW: 59.5 YW: 95.6 MM: 17.6 TM: 47.4

BW: 104 lbs.

Our largest framed heifer! Kelsey is long spined and feminine, with tons of performance. Bred to the right bull, she could hit a home run! Bred to Blair Athol Classic 53U on June 13 and exposed to him from June 26 to August 7, 2012. Projected calving date March 23, 2013.



KELSEY 71Y

LOT 19

Blair-Athol 161 *Glamour* 72Y

FEMALE PC02957292 DVL 72Y MAR 27, 2011

REMITALL HEATER 161U BNMHPH 13P HEAT 101S DLF IEF HYF
DLF IEF HYF P C02909574 RU 2M DEBRA 141P

RU 102L GLAMOUR 76R GHC LAWMAN 102L
P C02875730 REMITALL GLAMOUR 220J

CE: -3.2 BW: 6.1 WW: 52.0 YW: 88.0 MM: 15.9 TM: 41.9

BW: 99 lbs.

Another Heater daughter out of a hard working Bestrop cow. She is straight in her lines and very feminine. The Heater daughters are just coming into production and look great. Glamour will be no exception. Bred to Blair Athol 80P Contender 56W on June 25, 2012. Projected calving date is April 5, 2013.



GLAMOUR 72Y

LOT 20

Blair-Athol 161 *Golden Eye* 77Y

FEMALE PC02957336 DVL 77Y MAR 29, 2011

REMITALL HEATER 161U BNMHPH 13P HEAT 101S DLF IEF HYF
DLF IEF HYF P C02909574 RU 2M DEBRA 141P

BLAIR-ATHOL RIBEYE GAL 107W SHF RIB EYE M326 R117 DLF IEF HYF
P C02933446 BLAIR-ATHOL WESTERN GAL 78T

CE: -1.4 BW: 6.4 WW: 61.9 YW: 97.5 MM: 23.7 TM: 54.7

BW: 93 lbs.

A big, stout, Heater daughter out of a very hard working "Ribeye" two year old. A power packed pedigree with Duster, Major and Ribeye on the bottom. A female to watch; this was Poley's pick of our breds this summer. Bred to Blair Athol 80P Contender 56W on June 8, 2012. Projected calving date is March 19, 2013.



GOLDEN EYE 77Y

Ref

Remitall *Heater* 161U {DLF IEF HYF}

MALE PC02909574 NGA 161U MAR 10, 2008

BNMHPH 13P HEAT 101S REMITALL PATRIOT ET 13P
DLF IEF HYF P C02848089 ANL PBG 29F BONNIE 21P

RU 2M DEBRA 141P RU FUTURE PRINCE 2M
P C02853166 RU 153C DEBRA 41M

CE: -1.4 BW: 4.0 WW: 54.5 YW: 83.1 MM: 21.9 TM: 49.2

Sire of lots 5, 18, 19 & 20

Service sire to lots 11 & 17



HEATER 161U

BOOMAH 103Y



DEE DEE 106Y



PATTY 117Y



SOLID 131T



LOT 21

Blair-Athol 13K *Boomah* 103Y

FEMALE PC02957302 DVL 103Y May 7, 2011

BLAIR-ATHOL 65F ON LINE 13K RU 20X FUTURE 65F
P C02760396 MHR 2B MILDRED 76B 56D

RVP 80P UTMOST 46U LAGRANDE RELOAD 80P ET DLF IEF HYF
P C02910823 STAR RAYLYN 44M

CE: 4.0 BW: -1.1 WW: 26.7 YW: 49.8 MM: 23.3 TM: 36.7

BW: 65 lbs.

These daughters of Online 13K are the kind to build a herd around. Boomah 103Y is so correct and patterned to perfection. She nearly made our show team. Exposed to Blair Athol 6 Solid 131T from May 19 to August 8, 2012.

LOT 22

Blair-Athol 13k *Dee Dee* 106Y

FEMALE PC02957295 DVL 106Y May 10, 2011

BLAIR-ATHOL 65F ON LINE 13K RU 20X FUTURE 65F
P C02760396 MHR 2B MILDRED 76B 56D

BLAIR-ATHOL 6L DEANNA 30S RU 25C LEE 6L
P C02885094 BLAIR-ATHOL 664 DEANNA 14D

CE: 5.5 BW: 1.4 WW: 35.8 YW: 66.9 MM: 21.5 TM: 39.4

BW: 85 lbs.

A tremendous Online 13K daughter, Dee Dee 106Y will crank them out! She could be the best female we are selling. Awesome cow family, her dam, 30S and 80W, the dam of lot 23 are maternal sisters. Lot 10 is also a maternal sister. Bred to Blair Athol Classic 53U on May 20 and exposed to him from June 21 to August 7, 2012. Projected calving date is February 28, 2013.

LOT 23

Blair-Athol 27 *Patty* 117Y

FEMALE PC02957310 DVL 117Y May 29, 2011

BLAIR-ATHOL 13 PAVILLION 27W REMITALL PATRIOT ET 13P
DLF IEF HYF P C02930313 RU 2E SARA MAY 79M

BLAIR-ATHOL WORTH THE WAIT 80W BLAIR-ATHOL FIRST CHOICE 89S
P C02930266 BLAIR-ATHOL 664 DEANNA 14D

CE: 6.6 BW: 7.2 WW: 55.0 YW: 88.9 MM: 17.5 TM: 45.0

BW: 96 lbs.

Patty 117Y will grow into one of those big, old power cows we all need more of. Patriot/Tracker on the top side and her dam, 80W, is a tremendous young cow. She is the last calf from 14D and only the third heifer. 14D never missed a calf in 14 lactations. 30S, the dam of lot 22, is a maternal sister. Check her birth date and out of a two year old. Exposed to Blair Athol 6 Solid 131T from May 19 to August 8, 2012.

Ref

Blair-Athol 6 *Solid* 131T

MALE PC02908586 DVL 131T Jul 17, 2007

RU 25C LEE 6L NJW Z17 VAQUERO 25C
P C02826786 HAROLDSON'S FAITH 20X 26J

BLAIR-ATHOL 20 GRETCHEN ET 36R REMITALL KEYNOTE 20X
P C02871566 MHR 35A HAZEL 54A 18D

CE: 0.8 BW: 3.8 WW: 51.8 YW: 82.6 MM: 16.8 TM: 42.7

Sire of lots 15 & 16

Service sire to lots 12, 21 & 23

LOT 24

FOUR GRADE A Embryos
Fully Exportable EU Qualified

Projected Pedigree:

GOLDEN-OAK 4J MAXIUM 28M
P C02816155

EAGLE-RIDGE BLASTER ET 4J
TA-BAR CHANTELE 15K

RU 65F KIMBERLY 31K
DLF IEF HYF P C02771617

RU 20X FUTURE 65F
RU 22D JANA 31H

(PE)
CE: -2.9 BW: 4.4 WW: 45.2 YW: 76.9 MM: 18.5 TM: 41.2

Purchaser is responsible for all shipping costs.



MAXIUM 28M



KIMBERLY 31K

LOT 25

FOUR GRADE A Embryos
NORTH AMERICAN EXPORTABLE

Projected Pedigree:

SQUARE-D PLAINSMAN 946Y
DLF IEF HYF P C02958214

SQUARE-D RANCHMAN 257R DLF IEF HYF
SQUARE-D JAEDEN 846U

BLAIR-ATHOL 13 KISSES 17T
P C02900618

BLAIR-ATHOL 65F ON LINE 13K
BLAIR-ATHOL 36F KISSES 112P

(PE)
CE: 1.2 BW: 3.3 WW: 43.5 YW: 68.2 MM: 21.6 TM: 43.3

Purchaser is responsible for all shipping costs.



PLAINSMAN 946Y



KISSES 17T

CLASSIC 56U



Ref

Blair-Athol *Classic* 53U

MALE PC02916096 DVL 53U MAR 10, 2008

MHCVB 68M PROWLER 118P
P C02848089

STAR AMERICA BNMHPH SS MKS 68M DLF IEF HYF
DC 23S KATE 2K

RU 65F KIMBERLY 31K
DLF IEF HYF P C02771617

RU 20X FUTURE 65F
RU 22D JANA 31H

CE: -0.5 BW: 4.1 WW: 46.2 YW: 80.4 MM: 20.8 TM: 43.9

Sire of lots 10, 14, 17

Service sire to lots 16, 18 & 22

MAJOR 101N



Ref

Blair-Athol *Major* 101N {DLF IEF HYF}

MALE PC02849990 DVL 101N DEC 17, 2003

BLAIR-ATHOL 65F ON LINE 13K
P C02760396

RU 20X FUTURE 65F
MHR 2B MILDRED 76B 56D

BLAIR-ATHOL 25C AMIGA 20K
P C02764695

NJW Z17 VAQUERO 25C
BLAIR-ATHOL LADY GRACE 14F

CE: 2.0 BW: 5.4 WW: 46.4 YW: 83.5 MM: 31.4 TM: 54.6

Sire of lot 2

Service sire to lot 15

BRAVEHEART 43X



Ref

Blair-Athol *Braveheart* 43X {DLF IEF HYF}

MALE PC02943767 DVL 43X MAR 9, 2010

REMITALL HEATER 161U
DLF IEF HYF P C02909574

BNMHHPH 13P HEAT 101S DLF IEF HYF
RU 2M DEBRA 141P

HAROLDSON'S WLC68M KATRINA 33P
P C02854848

STAR AMERICA BNMHPH SS MKS 68M DLF IEF HYF
HAROLDSON'S 42H ANGELINA 70L

CE: -2.4 BW: 4.9 WW: 58.0 YW: 87.9 MM: 22.2 TM: 51.2

Service sire to lot 14

CONTENDER 56W



Ref

Blair-Athol *Contender* 56W {DLF IEF HYF}

MALE PC02930280 DVL 56W MAR 11, 2009

LAGRAND RELOAD 80P ET
DLF IEF HYF P C02892255

AA PRF WIDELOAD
TSF MS KEYNOTE 729

WILGOR 47K DANCETTE 37H 41N
P C02828471

REMITALL HOLLYWOOD 37H
WILGOR 54Y DANCETTE 512 47K

CE: -8.1 BW: 7.1 WW: 56.3 YW: 101.4 MM: 17.2 TM: 45.4

Service sire to lots 19 & 20

LOT 26

OBF *Chickie* 15R 86Y
 FEMALE PC02969231 ILM 86Y May 5, 2011

SQUARE-D BRICK 831U SQUARE-D LOGAN 209P
 DLF IEF HYF P C02924091 DUSTY-DEE 10L PEACH 31N

OBF CHICKIE 25M 15R TIL-TOBA REDEEM 11J 35M
 P C02870298 OBF CHICKIE 81D 25M

CE: 1.5 BW: 4.0 WW: 41.4 YW: 70.8 MM: 17.7 TM: 38.4
 BW: 89 lbs.

Wow! This female should have lots of friends on sale day. Just a May yearling and displaying the maturity, broodiness and extra spring of rib while remaining very attractive. She is a maternal sister to OBF Charles 45U, our senior herd sire and her dam's pedigree is packed with great cows. Again another female I hate to part with. Entered at CWA.
 Bred to OBF Renew 29Y on May 29, 2012.
 Exposed to MA DBK 83T National 35T 35X from June 12 to August 15, 2012.
 Pregnancy checked safe to May 29th service date.



Chickie 15R 86Y

Ref

OBF *Renew* 29Y
 MALE PC02963221 ILM 29Y MAR 27, 2011

ANL SBS 4M DUKE 78R ANL SBS 57G FRONTIER 4M
 P C02875666 ANL 30Z JESSICA 25G

OBF EMMILOU 32P 60T OBF JACOB 48N
 P C02903404 OBF EMMILOU 68E 32P

CE: -2.3 BW: 5.2 WW: 40.7 YW: 68.5 MM: 14.3 TM: 34.7

Service sire to lot 26

Ref

ANL SI 138W *Easy Way* 20Y
 MALE PC02964913 KKL 20Y Feb 18, 2011

ANL PBG 609 EASY WAY 138W H EASY DEAL 609 ET
 DLF IEF HYF P C02927689 ANL 43H ROSE 161M

ANL MD 13S MINDY 182W ANL RH SHREK 13S
 P C02960603 ANL 36N MINDY 76S

CE: -1.8 BW: 4.7 WW: 46.1 YW: 80.6 MM: 18.9 TM: 42.0

Service sire to lot 27

LOT 27

OBF *Radiance* 17S 66Y
 FEMALE PC02967186 ILM 66Y Apr 7, 2011

OBF CHARLES 45U OBF DYNAMIC 75S
 P C02936345 OBF CHICKIE 25M 15R

OBF RADIANCE 72N 17S ANL 122L PREDATOR 82P
 P C02889161 OBF RADIANCE 44C 72N

CE: -0.3 BW: 4.4 WW: 41.3 YW: 72.8 MM: 14.5 TM: 35.2
 BW: 86 lbs.

This heifer will catch your eye, dark red with a beautiful profile. Radiance is a maternal sister to our herdsire OBF McLovin 12X and a daughter of one of my favorite cows. If we weren't reducing our cow numbers, this female would not be for sale.
 Exposed to ANL SI 138W Easy Way 20Y from June 1 to August 10, 2012.
 Pregnancy checked safe to service for a calving date of April 10, 2013.



RADIANCE 17S 66Y

RASHELLE 9Y



LOT 28

Mil-WRAY *Raschelle* 9Y

FEMALE PC02954264 AKRS 9Y MAR 2, 2011

MIL-WRAY ROCKET 8R
P C02865370

TIL-TOBA ROCKET 4W 8A
KJE DAYLITE 119L DLF IEF HYC

MIL-WRAY MAY 27W
P C02929192

ANL 4L MATADOR 76P
MIL-WRAY ROSIE 7M

CE: -1.6 BW: 3.3 WW: 37.9 YW: 60.1 MM: 13.5 TM: 32.5

BW: 83 lbs.

9Y is a heifer's first calf. She goes back to a very strong cow family with deep roots on our farm. Exposed to WSF Can-Am Prince 143 from May 5 to July 1, 2012; observed bred on May 12. Pregnancy checked safe to the May 12th service.

SHANTEL 6Y



LOT 29

Mil-WRAY *Shantel* 6Y

FEMALE PC02954402 AKRS 6Y FEB 28, 2011

TIL-TOBA SIGN UP 11J 11S
DLF IEF HYF P C02884585

ANL 4L MATADOR 76P
TCPH MS FELICIA 11J

MIL-WRAY RONA 13R
P C02865365

SBS 57G RADAR 32K
MIL-WRAY TILLY 30H

CE: -1.6 BW: 3.8 WW: 32.1 YW: 55.1 MM: 15.8 TM: 31.9

BW: 90 lbs.

6Y is out of a good Radar cow that has consistently produced outstanding calves. Exposed to WSF Can-Am Prince 143 from May 5 to July 1, 2012; observed bred on May 20. Pregnancy checked safe to the May 20th service.

SOLANGE 2Y



LOT 30

Mil-WRAY *Solange* 2Y

FEMALE PC02954262 AKRS 2Y FEB 17, 2011

GH ADAMS 179R STANLEY 180U
P C02911604

FE 17L STAN BRIT 179R
BLAIR-ATHOL LD GEENA 8P

MIL-WRAY CHRIS 9W
P C02929198

MEADOW-ACRES CONNECTED 13K 86R
MIL-WRAY RENAE 35P

CE: 0.7 BW: 4.6 WW: 44.6 YW: 81.2 MM: 21.3 TM: 43.6

BW: 86 lbs.

2Y is a heifer's first calf, and her mother has another great calf at side this year. Exposed to WSF Can-Am Prince 143 from May 5 to July 1, 2012; observed bred on May 13. Pregnancy checked safe to the May 13th service.

LOT 31

Mil-WRAY *Callie* 23Y

FEMALE PC02954232 AKRS 23Y MAR 14, 2011

MEADOW-ACRES CONNECTED 13K 86R BLAIR-ATHOL 65F ON LINE 13K
P C02861117 MEADOW-ACRES 66E ADA 102M 5G

DWT MISS RASBERRY 17R TIL-TOBA TANDEM 43G 5M
P C02894166 DWT MISS GOLDY 26G

CE: 0.3 BW: 4.3 WW: 39.6 YW: 68.9 MM: 24.8 TM: 44.6

BW: 91 lbs.

Callie is a very good Connected heifer out of a cow that never misses. Her mother consistently produces top end calves, and the Connected daughters have all worked very well. Exposed to WSF Can-Am Prince 143 from May 5 to July 1, 2012; observed bred on May 5. Pregnancy checked safe to the May 5th service.



CALLIE 23Y

LOT 32

Mil-WRAY *Rory* 19Y

FEMALE PC02954258 AKRS 19Y MAR 9, 2011

MIL-WRAY ROCKET 8R TIL-TOBA ROCKET 4W 8A
P C02865370 KJE DAYLITE 119L DLF IEF HYC

MIL-WRAY LACEY 17U CPH LAWMAN 9L
P C02912673 MIL-WRAY LAURA 40R

CE: -0.1 BW: 3.9 WW: 36.8 YW: 64.5 MM: 12.2 TM: 30.6

BW: 90 lbs.

Rory is a moderate framed heifer out of our Rocket 8R bull. She will be a good milking female. Exposed to WSF Can-Am Prince 143 from May 5 to July 1, 2012; observed bred on June 1. Pregnancy checked safe to a June 1st service.



RORY 19Y

Ref

GH Adams 179R *Stanley* 180U

MALE PC02911604 GAH 180U JAN 26, 2008

FE 17L STAN BRIT 179R LFF STAN BRIT LAD 17L
P C02867647 RAR 83A RED MILLENNIUM LASS 8M

BLAIR-ATHOL LD GEENA 8P RST ROF STAR LINEDRIVE
P C02850010 SQUARE-D DELAINE 120M

CE: 2.4 BW: 3.1 WW: 41.2 YW: 80.6 MM: 23.3 TM: 43.9

Sire of lot 30

Service sire to lots 33 & 36

Ref

WSF CAN-AM *Prince* 143 {DLF IEF HYF}

MALE PC02965685 143 FEB 11, 2011

RVP STAR 533P CAN-AM ET 57U STAR BRIGHT FUTURE 533P ET
P C02918528 STAR BONNIE BETH 54N

THM 711 PRINCESS PRIME 8695 DRF JWR PRINCE VICTOR 711
DLF IEF HYF P C02922323 WILL-VIA MS PRIME N-74

CE: -2.3 BW: 4.6 WW: 52.4 YW: 81.9 MM: 26.4 TM: 52.6

Service sire to lots 28 - 32, 37 & 38



STANLEY 180U

YOLANDER 35S 44Y



LOT 33

Til-Toba *Yolander* 35S 44Y

FEMALE PC02956705 WRAY 44Y Apr 3, 2011

MEADOW-ACRES CONNECTED 13K 86R BLAIR-ATHOL 65F ON LINE 13K
P C02861117 MEADOW-ACRES 66E ADA 102M 5G

TIL-TOBA SILENCE 37J 35S ANL 4L MATADOR 76P
P C02884588 TIL-TOBA TANIS 10E 37J

CE: -2.7 BW: 6.1 WW: 50.0 YW: 81.1 MM: 28.2 TM: 53.2
BW: 91 lbs.

44Y is another very good Connected daughter on offer. She is dark red with pigmentation. Her mother is our top Matador daughter in the herd. Exposed to GH Adams 179R Stanley 180U from May 5 to July 1, 2012. Observed bred on May 20. Pregnancy checked safe to that service date.

YETTA 9N 47Y



LOT 34

Til-Toba *Yetta* 9N 47Y

FEMALE PC02956699 WRAY 47Y Apr 4, 2011

MEADOW-ACRES CONNECTED 13K 86R BLAIR-ATHOL 65F ON LINE 13K
P C02861117 MEADOW-ACRES 66E ADA 102M 5G

TIL-TOBA RADIANT 38H 9N SBS 57G RADAR 32K
P C02829219 TIL-TOBA RHONDA 28A 38H

CE: 1.3 BW: 4.0 WW: 46.9 YW: 76.3 MM: 24.2 TM: 47.7
BW: 89 lbs.

47Y Yetta is a good, stout, strong heifer that will prove to be a great cow. Her full sister was our high seller in 2009 sale to Phantom Creek Herefords and we have retained two sisters in our herd. Exposed to WSF Can-Am Prince 143 from May 5 to July 1, 2012. Pregnancy checked to calve mid March.

YOKI 58T 24Y



LOT 35

Til-Toba *Yoki* 58T 24Y

FEMALE PC02956710 WRAY 24Y MAR 9, 2011

MEADOW-ACRES CONNECTED 13K 86R BLAIR-ATHOL 65F ON LINE 13K
P C02861117 MEADOW-ACRES 66E ADA 102M 5G

TWIN-VIEW 30N KAYLEE 58T TWIN-VIEW 48G REMINGTON 30N
P C02895773 TWIN-VIEW 3Z JOSEPHINE 41L

CE: 0.7 BW: 4.8 WW: 38.2 YW: 66.8 MM: 25.8 TM: 44.9
BW: 87 lbs.

Yoki 24Y is a dark colored, thick bodied Connected daughter. She is out of a good two year old that we purchased from Twin View Polled Herefords. She carries a little different pedigree. Exposed to GH Adams 179R Stanley 180U from May 5 to July 1, 2012. Observed bred on May 20. Pregnancy checked safe to the service date.

LOT 36

Til-Toba *Yori* 36S 11Y

FEMALE PC02962373 BWTT 11Y MAR 2, 2011

MEADOW-ACRES CONNECTED 13K 86R BLAIR-ATHOL 65F ON LINE 13K
P C02861117 MEADOW-ACRES 66E ADA 102M 5G

TIL-TOBA SWEET PEA 28J 36S SBS 57G RADAR 32K
P C02884587 ASPEN-LANES 117P JOELLE 28J

CE: 1.1 BW: 3.9 WW: 44.6 YW: 77.0 MM: 22.7 TM: 45.0

BW: 86 lbs.

11Y is Brett's heifer that we should likely keep in our herd, but she is offering you one of, if not her best, in this sale. 11Y's mother is a full sister to the Julie cow we owned with Connie Gleich. Julie was Grand Champion Female at Brandon Fall Fair and with her full sister, placed Champion and Reserve Champion Bred and Owned at Bonanza 2004 in Regina. A Connected daughter out of this cow family will make an excellent cross. Exposed to GH Adams 179R Stanley 180U from May 5 to July 1, 2012. Observed bred May 18. Pregnancy checked safe to that service date.



Yori 36S 11Y

LOT 37

Til-Toba *Yvonne* 39S 43Y

FEMALE PC02956706 WRAY 43Y APR 2, 2011

TIL-TOBA SIGN UP 11J 11S ANL 4L MATADOR 76P
DLF IEF HYF P C02884585 TCPH MS FELICIA 11J

TIL-TOBA STAR 31K 39S CPH LAWMAN 9L
P C02884592 TIL-TOBA FANNY 15G 31K

(PE)

CE: -1.2 BW: 3.7 WW: 30.6 YW: 53.4 MM: 16.0 TM: 31.3

BW: 89 lbs.

43Y is a very correct feminine daughter of Til-Toba Sign-up, a bull we sold to David Irwin at Isabella. After we saw his daughters, we decided to bring him home to use. The daughters he left us have made this a good decision. Exposed to WSF Can-Am Prince 143 from May 5 to July 1, 2012. Observed bred on May 26. Pregnancy checked safe to that service date.



Yvonne 39S 43Y

LOT 38

Til-Toba *Yorri* 315U 30Y

FEMALE PC02956717 WRAY 30Y MAR 14, 2011

TIL-TOBA SIGN UP 11J 11S ANL 4L MATADOR 76P
DLF IEF HYF P C02884585 TCPH MS FELICIA 11J

XLP CLF 61P SARA 315U GH LD WILDCARD 61P DLF IEF HYF
P C02923756 XLP CLF 108N SARA 315S

CE: -1.6 BW: 4.2 WW: 37.4 YW: 62.4 MM: 17.1 TM: 35.8

BW: 86 lbs.

Yorrie is another stout made Sign-up daughter. Her mother Sara 315U is a cow we purchased from Lone Pine Polled Herefords. She is not the biggest cow but makes up for it in milk production, as she always brings in one of the top calves. This heifer will prove herself a great addition to any herd. Exposed to WSF Can-Am Prince 143 from May 5 to July 1, 2012. Observed bred on May 17. Pregnancy checked safe to that service date.



Yorri 315U 30Y

Ref

MEADOW-ACRES *Connected* 13K 86R
MALE PC02861117 FBL 86R MAR 14, 2005

BLAIR-ATHOL 65F ON LINE 13K RU 20X FUTURE 65F
P C02760396 MHR 2B MILDRED 76B 56D

MEADOW-ACRES 66E ADA 102M 5G MS CHOICE VICTOR 102G 102M DLF IEF HYC
P C02680314 WTK 75A ADA 66E

CE: 1.2 BW: 4.9 WW: 45.9 YW: 79.1 MM: 33.0 TM: 56.0

Sire to lots 31, 33 - 36



CONNECTED 13K 86R

VICTORIA 719T 3Z



SIRE of LOT 1 - Victor 719T

LOT 39

ROSELAWN MDG *Victoria* 719T 3Z
FEMALE PC02968783 AHK 3Z JAN 26, 2012

TH 122 71I VICTOR 719T
DLF IEF HYF P C02942339

DRF JWR PRINCE VICTOR 71I
KBCR 19D DOMINETTE 122 DLF IEFJ

MCCOY 7U CONNIE 58X
DLF IEF HYF P C02943153

MCCOY 58G WARRANT 7U
MCCOY SS CONNIE 19U

CE: 3.4 BW: 3.0 WW: 56.6 YW: 87.2 MM: 19.0 TM: 47.3

BW: 70 lbs.

3Z's sire, 719T, is becoming a breed icon for light birth weights and explosive growth and this calf is no exception. It has been truly a pleasure to watch her grow. She is getting deeper and thicker every day, as well as has loads of eye appeal. Her two year old mother has done an awesome job on this calf. You will want to look her up on sale day. Co-owned with Dan Gullett.

LOT 40

ROSELAWN *Payton* 529T 86Z
FEMALE PC02967496 AHK 86Z MAR 3, 2012

HAROLDSON'S TANK 45P 10W
DLF IEF HYF P C02939176

NJW FHF 9710 TANK 45P DLF IEF HYF
SQUARE-D NATALIE 516L

ROSELAWN RHENA 121R 529T
P C02901054

DTHF RASPUTIN 121R DLF IEF HYF
ROSELAWN TARA 9L 14N

CE: -1.1 BW: 5.0 WW: 45.0 YW: 73.4 MM: 19.7 TM: 42.2

BW: 100 lbs.

A tremendously thick Tank 10W daughter. Her Rasputin mother has never missed. We showed her yearling full sister this year and are eagerly awaiting her first calf. Co-owned with Ross Madsen.

PAYTON 529T 86Z



LOT 41

Roselawn *Piper* 154U 5Y

FEMALE PC02957032 AHK 5Y Feb 22, 2011

HARVIE OVHF WALK HARD 154U
DLF IEF HYF P C02912991

HARVIE RAFTSMAN 16R
BBSF 100L UNIQUE ET 131R

ROSELAWN KARLI 82P 94W
P C02927384

HF 4L PHOENIX 82P
ROSELAWN AMBER 81N 14S

CE: -1.3 BW: 3.3 WW: 46.7 YW: 67.5 MM: 19.9 TM: 43.3

BW: 80 lbs.

A moderate framed Walk Hard daughter with lots of depth and eye appeal. Her mother, grand dam and great-grand dam are perfect uddered cows with good quality milk. Exposed to Haroldson's Tank 45P 10W from May 20 to August 5, 2012. Pregnancy checked safe. Tested DLF IEF HYF.



Piper 154U 5Y

LOT 42

Roselawn *Piper* 154U 19Y

FEMALE PC02957036 AHK 19Y Feb 28, 2011

HARVIE OVHF WALK HARD 154U
DLF IEF HYF P C02912991

HARVIE RAFTSMAN 16R
BBSF 100L UNIQUE ET 131R

ROSELAWN AMBER 81N 14S
P C02880219

HAROLDSON'S BLACKHAWK 37H 81N
ROSELAWN JENNA 93F 2J

CE: -2.8 BW: 5.9 WW: 51.7 YW: 83.1 MM: 17.0 TM: 42.9

BW: 100 lbs.

Her dam 14S was a heifer Brady showed very successfully and has turned out to be a great cow. Her granddam 2J, was a pillar cow in our herd with three daughters in the herd by different sires. Buy this heifer with confidence; she won't disappoint. Exposed to Haroldson's Tank 45P 10W from May 20 to August 5, 2012. Pregnancy checked safe. Tested DLF IEF HYF.



Piper 154U 19Y

LOT 43

Roselawn *Bell* 89W 41Y

FEMALE PC02957340 AHK 41Y MAR 7, 2011

ROSELAWN WINSTON 87T 89W
DLF IEF HYF P C02927383

ROSELAWN JASPER 121R 87T DLF IEF HYF
ROSELAWN LUCY 17L 25R

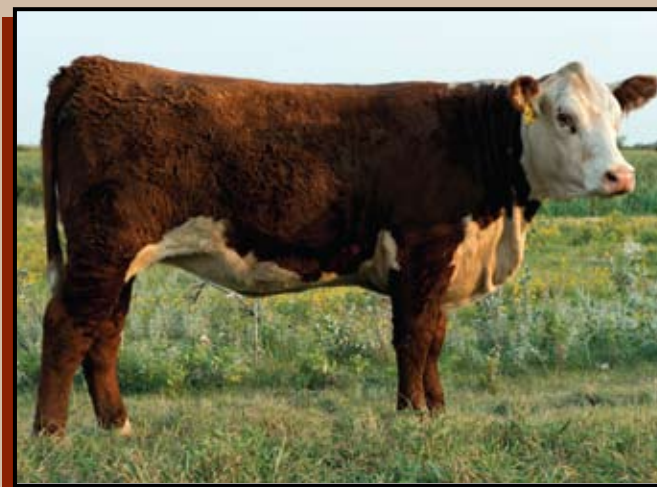
ROSELAWN AMBER 81N 101R
DLF IEF HYF P C02865868

HAROLDSON'S BLACKHAWK 37H 81N
ROSELAWN SCARLET 4G 41M

CE: -3.2 BW: 5.9 WW: 44.0 YW: 75.8 MM: 17.4 TM: 39.4

BW: 98 lbs.

A very good Winston daughter that is hard to part with. Her mother is a very striking, good milking cow and this heifer should be no different. Exposed to Haroldson's Tank 45P 10W from May 20 to August 5, 2012. Pregnancy checked safe. Tested DLF IEF HYF.



Bell 89W 41Y

Piper 154U 53Y



LOT 44 FEMALE PC02957346 AHK 53Y MAR 10, 2011
 ROSELAWN Piper 154U 53Y

HARVIE OVHF WALK HARD 154U HARVIE RAFTSMAN 16R
 DLF IEF HYF P C02912991 BBSF 100L UNIQUE ET 131R

ROSELAWN SCARLET 4G 82N ROSELAWN ODYSSEY 850A 4G
 P C02831534 ROSELAWN CRISTI 93F 23H

CE: -1.1 BW: 5.2 WW: 49.3 YW: 77.6 MM: 15.3 TM: 40.0

BW: 100 lbs.

A Walk Hard x Odyssey/Fashion. Performance and maternal traits here. We bred Walk Hard females to Tank 10W last year with amazing results. Don't pass this one up. Exposed to Haroldson's Tank 45P 10W from May 20 to August 5, 2012. Pregnancy checked safe. Tested DLF IEF HYF.

Piper 154U 63Y



LOT 45 FEMALE PC02957325 AHK 63Y MAR 13, 2011
 ROSELAWN Piper 154U 63Y

HARVIE OVHF WALK HARD 154U HARVIE RAFTSMAN 16R
 DLF IEF HYF P C02912991 BBSF 100L UNIQUE ET 131R

ROSELAWN ERIN 22N 61W JWH 4L NEXT STEP 22N
 P C02927376 ROSELAWN BRENDA 4G 86L

CE: -6.3 BW: 10.0 WW: 60.8 YW: 100.0 MM: 17.7 TM: 48.1

BW: 114 lbs.

A Walk Hard daughter out of a Next Step/Odyssey two year old that did a heck of a job on her first calf. Ask Doug Troop what he thinks of Next Step daughters. He likes them and you'll like this one too! Exposed to Haroldson's Tank 45P 10W from May 20 to August 5, 2012. Pregnancy checked safe. Tested DLF IEF HYF.

Bell 154U 73Y



LOT 46 FEMALE PC02957351 AHK 73Y MAR 16, 2011
 ROSELAWN Aywon Bell 154U 73Y

HARVIE OVHF WALK HARD 154U HARVIE RAFTSMAN 16R
 DLF IEF HYF P C02912991 BBSF 100L UNIQUE ET 131R

ROSELAWN RHENA 121R 18U DTHF RASPUTIN 121R DLF IEF HYF
 P C02915218 ROSELAWN KIKIT 615C ET 12G

CE: -0.7 BW: 4.9 WW: 47.6 YW: 74.8 MM: 15.7 TM: 39.5

BW: 90 lbs.

A Walk Hard out of a Rasputin/Fullback daughter. This moderate framed heifer will have a great udder, high quality milk and give you a good calf every year. Exposed to Haroldson's Tank 45P 10W from May 20 to August 5, 2012. Pregnancy checked safe. Tested DLF IEF HYF. Co-owned with Ross Madsen.

We are offering you two recipient cows – one embryo is sired by MR. Hereford and the other by MHPH 101S Umpire 118U. MR Hereford is one of the most talked about bulls in the breed, and here's your chance to have one of his first calves in Canada. Umpire is the 2009 National Agribition Champion. The dam, Taylor 55U, is an own daughter of Scarlet 17K (donor cow at C&T), maternal sister to Starlet 9N (donor cow at Phantom Creek) and flush sister to Bobcat 60U. The prospects of these two matings are endless.

LOT 47A

Black baldie cow CARRYING THE FOLLOWING EMBRYO
MHPH 101S UMPIRE 118U X C&T 12R TAYLOR ET 55U

MHPH 101S UMPIRE 118U BNMHPH 13P HEAT 101S DLF IEF HYF
DLF IEF HYF P C02909473 MHPH MS 68M NITA 1112R DLF IEF HYF

C&T 12R TAYLOR ET 55U GHC CANUCK 12R
DLF IEF HYF P C02915937 C&T 4G SCARLET 17K

(PE)
CE: -3.2 BW: 5.4 WW: 54.3 YW: 89.8 MM: 15.5 TM: 42.7

LOT 47B

Black baldie cow CARRYING THE FOLLOWING EMBRYO
TH 71U 719T MR. HEREFORD 11X X C&T 12R TAYLOR ET 55U

TH 71U 719T MR HEREFORD 11X TH 122 71I VICTOR 719T DLF IEF HYF
DLF IEF HYF P C02964813 TH 7N 45P RITA 71U DLF IEF HYF

C&T 12R TAYLOR ET 55U GHC CANUCK 12R
DLF IEF HYF P C02915937 C&T 4G SCARLET 17K

(PE)
CE: 0.2 BW: 4.6 WW: 62.5 YW: 90.7 MM: 14.3 TM: 45.6

Ref

Haroldson's *Tank* 45P 10W {DLF IEF HYF}
MALE PC02939176 AFSY 10W Feb 12, 2009

NJW FHF 9710 TANK 45P FHF 8403 STARBUCK 19H
DLF IEF HYF P C02924181 GV 579 VICTORIA 9710

SQUARE-D NATALIE 516L WLB 24F BREWSTER 10E 22J
P C02785566 SQUARE-D KATIE 816

CE: 1.6 BW: 2.1 WW: 39.6 YW: 71.1 MM: 20.8 TM: 40.6

10W has far exceeded our expectations. Six sons sold by private treaty out of the yard. They were priced the highest and sold first. We are very excited to calve his heifers next spring. We bred all Walk Hard heifers and a group of commercial Black baldy heifers to him last year, who had no problems calving and the result was excellent calves on all of them. We were so impressed with his calves and calving ease we bred 23 heifers to him this year. The Walk Hard 154U and Tank 10W cross has been exceptional.

Ref

HARVIE OVHF *Walkhard* 154U {DLF IEF HYF}
MALE PC02912991 CVIH 154U MAR 29, 2008

HARVIE RAFTSMAN 16R HARVIE LADIES MAN 4L DLF IEF HYF
P C02865314 HARVIE MISS FIREFLY 51F DLF IEF HYF

BBSF 100L UNIQUE ET 131R BRL CALL 100L DLF IEF
P C02872531 BBSF 7C UNIQUE 1K

CE: -0.2 BW: 3.4 WW: 54.0 YW: 80.8 MM: 17.0 TM: 44.0

We calved the first daughters this year. Every one of them has a great udder, good quality milk and is raising a great calf. The same goes for the ones we sold. Buy his daughters with confidence.



Umpire 118U



Mr. Hereford 11X



Tank 45P 10W



Walkhard 154U

VICTOR 521X ET



UNTAPPED 425X ET



TAHOE R117 T100



RENO ET 15W



Ref

TH 122 711 *Victor* 521X ET {DLF IEF HYF}
 Male PC02963602 521X Apr 12, 2010

DRF JWR PRINCE VICTOR 711 HRP THM VICTOR 109W 9329
 P A41141619 RHF 964 VICTRA 4057

KBCR 19D DOMINETTE 122 NJW 1Y WRANGLER 19D
 DLF IEF P A42220359 KBCR DOMINETTE 9112

CE: 6.6 BW: 1.1 WW: 51.0 YW: 82.6 MM: 19.9 TM: 45.4
 Sire of lots 50, 51 AI Service sire to lots 63 - 65

Ref

TH 89T 743 *Untapped* 425X ET {DLF IEF HYF}
 Male PC02960411 425X Mar 8, 2010

CRR ABOUT TIME 743 THM DURANGO 4037 DLF IEF HYF
 DLF IEF HYF P C02935725 CRR D03 CASSIE 206

TH 16G 20N GEMINI 89T NPH 20X SPARTAN 20N DLF IEF HYC
 DLF IEF HYF P A42779363 TEE-JAY 707B GEMINI ET 16G

CE: -0.5 BW: 3.8 WW: 52.4 YW: 78.3 MM: 17.5 TM: 43.7
 Sire of lots 49, 52, & 68 AI Service sire to lots 56, 57, 61 & 62

Ref

SHF *Tahoe* R117 T100
 Male PC02933797 T100 Feb 21, 2007

SHF RIB EYE M326 R117 KCF BENNETT 3008 M326 DLF IEF HYF
 DLF IEF HYF P C02910420 HVH MISS HUDSON 83K 8M

SHF LADY 512 L73 MM RSM STOCKMASTER 512
 P A42176576 SHF INTERSTATE D03 G28

CE: 1.0 BW: 4.3 WW: 66.7 YW: 109.4 MM: 17.3 TM: 50.7
 Sire of lots 48, 54, 55, 58, 63, 65 & 67

Ref

HAROLDSON'S WLC *Reno* 15W {DLF IEF HYF}
 Male PC02948654 AFSY 15W Jan 3, 2009

HARVIE RAFTSMAN 16R HARVIE LADIES MAN 4L DLF IEF HYF
 P C02865314 HARVIE MISS FIREFLY 51F DLF IEF HYF

HAROLDSON'S 37H MIRA ET 62K REMITALL HOLLYWOOD 37H
 P C02777365 HAROLDSON'S CU DESTINY 2Z 19G

CE: 0.6 BW: 1.3 WW: 45.8 YW: 77.9 MM: 13.9 TM: 36.8
 Sire of lot 64 Exposure sire to the bred yearlings

Rhythm T100 21Z



LOT 48

HAROLDSON'S *Rhythm* T100 21Z

FEMALE PC02968287 AFSY 21Z Feb 26, 2012

SHF TAHOE R117 T100
P C02933797

SHF RIB EYE M326 R117 DLF IEF HYF
SHF LADY 512 L73

LOT 49

HAROLDSON'S *Lassie* 425X 22Z

FEMALE PC02968288 AFSY 22Z Feb 28, 2012

TH 89T 743 UNTAPPED 425X ET
DLF IEF HYF P C02960411

CRR ABOUT TIME 743 DLF IEF HYF
TH 16G 20N GEMINI 89T DLF IEF HYF

HAROLDSON'S TEMPTRESS 29R 81U
P C02930759

HAROLDSON'S PIPESTONE 68M 29R
DXB 3K TEMPTRESS 23M

GHC MISS LASSIE 3L
P C02779799

GHC KEYMAN 36F
GHC MISS SARA 22C

CE: -0.5 BW: 5.1 WW: 58.6 YW: 97.5 MM: 16.5 TM: 45.8

CE: 1.0 BW: 4.0 WW: 43.0 YW: 67.1 MM: 14.4 TM: 35.9

BW: 93 lbs.

Rhythm has been a favorite around the farm this summer. She is powerful right from top to bottom. She has that extra extension and absolutely beautiful cosmetics to top it all off. This heifer should be very competitive in the show ring but better yet a powerful donor in the future. **Retaining the right to one flush at our expense and buyer's convenience.**

BW: 85 lbs.

Here is a direct daughter of national champion, Untapped. This heifer is very well balanced and complete made. She has a lot of shape to her and still maintains a real nice look. For those of you looking for a junior heifer for next summer, be sure to study this heifer; I think she has a lot of future to her.

Lassie 425X 22Z



MADONNA 521X 3Z



SARAH 521X 14Z



ZENA 425X 47Z



DEENA 120X 73Z



LOT 50

HAROLDSON'S *Madonna* 521X 3Z

FEMALE PC02968278 AFSY 3Z FEB 8, 2012

TH 122 711 VICTOR 521X ET DRF JWR PRINCE VICTOR 711
DLF IEF HYF P C02963602 KBCR 19D DOMINETTE 122 DLF IEF

HAROLDSON'S WLC MADONNA ET 8N REMITALL ONLINE 122L
P C02838000 HAROLDSON'S 37H MIRA ET 62K

CE: 3.2 BW: 3.3 WW: 55.8 YW: 95.4 MM: 18.1 TM: 46.0

BW: 88 lbs.

This is one powerful heifer calf that I believe has a very promising future ahead of her. She is a very well balanced female that has a lot of substance and capacity. She has cow power written all over her. Mira being her grandmother should ensure extra quality. Retaining the right to one flush at our expense and the buyer's convenience.

LOT 51

HAROLDSON'S JVJ *Sarah* 521X 14Z

FEMALE PENDING AFSY 14Z FEB 24, 2012

TH 122 711 VICTOR 521X ET DRF JWR PRINCE VICTOR 711
DLF IEF HYF P C02963602 KBCR 19D DOMINETTE 122 DLF IEF

HAROLDSON'S ANL SARAH T100 35W SHF TAHOE R117 T100
P C02945212 HAROLDSON'S SARAH 122L 22R

(PE)

CE: 4.5 BW: 2.0 WW: 53.3 YW: 87.1 MM: 18.4 TM: 45.1

BW: 75 lbs.

Here is another 521X heifer that has a real nice look to her. She is a very long bodied and complete made. Her mom is an awesome Tahoe daughter with a perfect udder. I really like this genetic package.

LOT 52

HAROLDSON'S *Zena* 425X 47Z

FEMALE PC02968298 AFSY 47Z MAR 21, 2012

TH 89T 743 UNTAPPED 425X ET CRR ABOUT TIME 743 DLF IEF HYF
DLF IEF HYF P C02960411 TH 16G 20N GEMINI 89T DLF IEF HYF

MCCOY 532M ZENA 26R KJ 520E INVESTOR 32M ET
P C02865042 MCCOY 58G ZENA 32L

CE: -2.9 BW: 6.9 WW: 52.1 YW: 80.4 MM: 17.7 TM: 43.8

BW: 104 lbs.

Zena is a powerful heifer out of a powerful cow. This heifer has a lot of rib and thickness to her. She is a very sound structured female that has a broody look to her. Her mom has been an excellent producer.

LOT 53

HAROLDSON'S *Deena* 120X 73Z

FEMALE PC02970339 AFSY 73Z APR 5, 2012

MHPH 40U INSPECTOR 120X WLB SHAPLEY 50S 40U
DLF IEF HYF P C02940438 MHPH MS 29F NITA 112L DLF IEF HYF

TLELL 23C DEENA 1M JSF 37 271 DEVO 23C
P C02804761 TLELL 5F DELICIOUS 9K

CE: 3.4 BW: 4.7 WW: 48.9 YW: 86.1 MM: 16.4 TM: 40.9

BW: 90 lbs.

This April baby will really catch your eye. She is sweet fronted and long bodied with a real cool look to her. She would make a great junior project.

ELLA T100 40W



ELLA 4T 7Z

LOT 54 HAROLDSON'S *Ella* T100 40W
FEMALE PC02945189 AFSY 40W MAR 17, 2009

LOT 54A HAROLDSON'S *Ella* 4T 7Z
FEMALE Pending AFSY 7Z Feb 16, 2012

SHF TAHOE R117 T100 SHF RIB EYE M326 R117 DLF IEF HYF
P C02933797 SHF LADY 512 L73

HAROLDSON'S WLL ANCHOR 4T REMITALL GOVERNOR 236G
P C02901004 HAROLDSON'S 37H MIRA ET 62K

REMITALL ELLA 216L REMITALL FINE LINE 141F
P C02789526 JUSTAMERE 304Z ELLA 170H

HAROLDSON'S ELLA T100 40W SHF TAHOE R117 T100
P C02945189 REMITALL ELLA 216L

CE: 0.4 BW: 3.7 WW: 47.5 YW: 81.6 MM: 12.9 TM: 36.7

(PE)
CE: -0.8 BW: 4.8 WW: 51.6 YW: 89.4 MM: 15.1 TM: 41.0

BW: 89 lbs.

BW: 76 lbs.

Here is a typical Tahoe daughter, big ribbed, easy doing and an awesome udder with a great calf at side. Her mating to Young Gun will be very exciting. Bred to Haroldsons Young Gun 4T 92Y on May 13, 2012.

This Anchor daughter is one of my favorites. She is a big ribbed heifer that is very sound made with an attractive look to her. Be sure to study this one, I think she could handle some heat next summer.

LOT 55 SELLING THE RIGHT TO FLUSH

HAROLDSON'S *Temptress* T100 33W

FEMALE PC02933802 AFSY 33W MAR 12, 2009

Selling one flush in this powerful Tahoe female. The flush can be performed this fall. We will guarantee six freezable eggs, anything less will be prorated back and anything over ten will be split between the purchaser and Haroldsons.

TEMPTRESS T100 33W



SHF TAHOE R117 T100 SHF RIB EYE M326 R117 DLF IEF HYF
P C02933797 SHF LADY 512 L73

HAROLDSON'S TEMPTRESS 13P 25S REMITALL PATRIOT ET 13P
P C02887454 DXB 3K TEMPTRESS 23M

CE: -1.2 BW: 3.6 WW: 58.8 YW: 97.3 MM: 16.8 TM: 46.2

Haroldson's Temptress 13P 25S
& Haroldson's Temptress T100 33W
Reserve Grand Champion Female

JULIANNE 513S 7Y



ZENA 16R 10Y



REESE T100 16Y



ARIEL 4T 37Y



LOT 56

HAROLDSON'S *Julianne* 513S 7Y

FEMALE PENDING AFSY 7Y FEB 16, 2011

STAR 26P HEMI 413S ET P C02909877 STAR TRF INDEPENDENCE 26P ET STAR RICKI 162M

H JULIANNE 9032 P 43005851 TH JWR SOP 16G 57G TUNDRA 63N DLF IEF HYF GO MS L18 EXCEL R55 62K

(PE)
CE: 2.4 BW: 1.5 WW: 47.0 YW: 76.8 MM: 20.2 TM: 44.0

BW: 81 lbs.
Here is a real solid heifer with a lot of future. She is real deep bodied and has an abundance of substance. She is a long bodied female with a little different pedigree for most. Bred to TH 89T Untapped 425X ET on June 3, 2012 and exposed to Haroldson's WLC Reno ET 15W until August 15, 2012.

LOT 57

PCL *Zena* 16R 10Y {DLF IEF HYF}

FEMALE PC02955372 DAWM 10Y FEB 8, 2011

HARVIE RAFTSMAN 16R P C02865314 HARVIE LADIES MAN 4L DLF IEF HYF HARVIE MISS FIREFLY 51F DLF IEF HYF

MCCOY 532M ZENA 42S DLF IEF HYF P C02882723 KJ 520E INVESTOR 532M ET MCCOY 58G ZENA 32L

CE: 0.9 BW: 4.0 WW: 48.5 YW: 75.2 MM: 19.2 TM: 43.5

BW: 86 lbs.
Here is a real solid Raftsmen daughter. This heifer has a lot of shape and thickness to her. Being out of the Zena cow family will ensure extra cow power. Bred to TH 89T Untapped 425X ET on May 21, 2012; exposed to Haroldson's WLC Reno ET 15W from June 13 to August 15, 2012.

LOT 58

HAROLDSON'S JVJ *Reese* T100 16Y {DLF IEF HYF}

FEMALE PC02960157 AFSY 16Y MAR 3, 2011

SHF TAHOE R117 T100 P C02933797 SHF RIB EYE M326 R117 DLF IEF HYF SHF LADY 512 L73

HAROLDSON'S REESE 10H 97M P C02809378 MSU STAR HEADLINER LIAN 75A SERENADE 310G

CE: -1.8 BW: 6.2 WW: 58.6 YW: 96.1 MM: 16.2 TM: 45.5

BW: 98 lbs.
This Tahoe daughter is very powerful from every angle. She is a stout made heifer with an abundance of rib shape and capacity. Exposed to Haroldson's WLC Reno ET 15W from May 15 to August 15, 2012.

LOT 59

HAROLDSON'S *Ariel* 4T 37Y

FEMALE PC02956967 AFSY 37Y MAR 22, 2011

HAROLDSON'S WLL ANCHOR 4T P C02901004 REMITALL GOVERNOR 236G HAROLDSON'S 37H MIRA ET 62K

HAROLDSON'S ARIEL 57G ET 59S P C02889710 RU 20X BOULDER 57G DLF IEF HYF SBS ETTE 2E

CE: 1.6 BW: 2.6 WW: 44.5 YW: 78.8 MM: 15.7 TM: 38.0

BW: 80 lbs.
Ariel is a very complete made heifer with that extra power. She is very sound made with extra rib. Her mom has a full sister at side again this year that looks very promising. Exposed to Haroldson's WLC Reno ET 15W from June 2 to August 15, 2012. Observed bred on June 5th.

LOT 60

Haroldson's *Janelle* 4T 43Y

FEMALE PC02957199 AFSY 43Y MAR 24, 2011

HAROLDSON'S WLL ANCHOR 4T REMITALL GOVERNOR 236G
P C02901004 HAROLDSON'S 37H MIRA ET 62K

HAROLDSON'S JANELLE 15E 70H HAROLDSON'S DIAMOND 2Z 15E
P C02724687 BLAIR-ATHOL SWEET PEA 32E

CE: -1.9 BW: 5.6 WW: 49.7 YW: 88.6 MM: 12.6 TM: 37.5

BW: 96 lbs.

This Anchor daughter is long made and from a cow family with lots of longevity. Exposed to Haroldson's WLC Reno ET 15W from May 25 to August 15, 2012.



Shaundra 4T 51Y

LOT 61

Haroldson's *Shaundra* 4T 51Y

FEMALE PC02957203 AFSY 51Z MAR 27, 2011

HAROLDSON'S WLL ANCHOR 4T REMITALL GOVERNOR 236G
P C02901004 HAROLDSON'S 37H MIRA ET 62K

DYNAMITE ACRES SHAUNDRA 309M DYNAMITE ACRES DARK RUM 189J
P C02816314 DYNAMITE ACRES SHANNA 230K

CE: -0.7 BW: 5.2 WW: 47.4 YW: 82.5 MM: 13.2 TM: 36.9

BW: 90 lbs.

Here is another real nice Anchor daughter. This is a high volume heifer attractive in her makeup. Bred to TH 89T Untapped 425X ET on May 22, 2012. Exposed to Haroldson's WLC Reno ET 15W from June 1 to August 15, 2012.



Carla 4T 55Y

LOT 62

Haroldson's *Carla* 4T 55Y

FEMALE PC02956961 AFSY 55Y APR 1, 2011

HAROLDSON'S WLL ANCHOR 4T REMITALL GOVERNOR 236G
P C02901004 HAROLDSON'S 37H MIRA ET 62K

HAROLDSON'S CARLA 11P 37U HAROLDSON'S ROBUST 005 11P
P C02934378 GHC MISS CARLA ET 40N

CE: -1.8 BW: 5.8 WW: 53.7 YW: 91.1 MM: 15.6 TM: 42.5

BW: 89 lbs.

Carla is very well balanced and super complete. She is a strong topped female that is full of shape. This heifer has a great look to her. She would be very competitive this fall. Bred to TH 89T Untapped 425X ET on May 12, 2012. Exposed to Haroldson's WLC Reno ET 15W from June 1 to August 15, 2012.



Anchor 4T

Ref

Haroldson's WLL *Anchor* 4T

MALE PC02901004 AFSY 4T JAN 20, 2007

REMITALL GOVERNOR 236G REMITALL CASINO 12C
P C02676840 REMITALL ZERMARVEL 111Z

HAROLDSON'S 37H MIRA ET 62K REMITALL HOLLYWOOD 37H
P C02777365 HAROLDSON'S CU DESTINY 2Z 19G

CE: -1.9 BW: 5.9 WW: 55.7 YW: 97.3 MM: 17.3 TM: 45.2

Sire of lots 54A, 59 - 62

SARAH T100 59Y



LOT 63 HAROLDSON'S *Sarah* T100 59Y
 FEMALE PC02957224 AFSY 59Y APR 1, 2011

SHF TAHOE R117 T100 SHF RIB EYE M326 R117 DLF IEF HYF
 P C02933797 SHF LADY 512 L73

HAROLDSON'S SARAH 68M 59T STAR AMERICA BNMHPH SS MKS 68M DLF IEF HYF
 P C02914283 HAROLDSON'S SARAH 014K 6P

CE: -0.5 BW: 5.1 WW: 57.1 YW: 92.7 MM: 17.6 TM: 46.2

BW: 84 lbs.

This Tahoe daughter should make some friends on sale day. She is long, stout and full of shape. She is a very neat package. Bred to TH 122 711 Victor 521X ET on May 21, 2012. Exposed to Haroldson's WLC Reno ET 15W from June 1 to August 15, 2012.

SARAH 15W 84Y



LOT 64 HAROLDSON'S *Sarah* 15W 84Y
 FEMALE PC02957233 AFSY 84Y APR 4, 2011

HAROLDSON'S WLC RENO ET 15W HARVIE RAFTSMAN 16R
 DLF IEF HYF P C02948654 HAROLDSON'S 37H MIRA ET 62K

HAROLDSON'S SARAH 28T 26W HAROLDSON'S FORUM 2001 28T
 P C02945210 HAROLDSON'S SARAH 68M 59T

CE: -0.3 BW: 2.7 WW: 45.0 YW: 76.1 MM: 15.4 TM: 37.9

BW: 75 lbs.

This Reno daughter has a real maternal look to her. She is a sharp fronted female with lots of eye appeal. Bred to TH 122 711 Victor 521X ET on May 21, 2012.

ELECTRA T100 102Y



LOT 65 HAROLDSON'S *Electra* T100 102Y
 FEMALE PC02957241 AFSY 102Y MAY 13, 2011

SHF TAHOE R117 T100 SHF RIB EYE M326 R117 DLF IEF HYF
 P C02933797 SHF LADY 512 L73

HAROLDSON'S ELECTRA 29F 4R CS BOOMER 29F DLF IEF HYF
 P C02874761 HAROLDSON'S WLC MADONNA ET 8N

CE: 1.4 BW: 4.5 WW: 61.2 YW: 104.2 MM: 19.2 TM: 49.8

BW: 84 lbs.

This young Tahoe daughter is a real nice female. She is sharp fronted but still has a lot of volume and spring of rib. Her mom is a real solid producer and traces back to Mira on the bottom side. Bred to TH 122 711 Victor 521X ET on May 12, 2012 and exposed to Haroldson's WLC Reno ET 15W from June 1 to August 15, 2012.

Impact 45p 19z



Impact is a very well balanced complete made bull with extra muscle. This bull is long bodied with a good front end and a nice shoulder. His mom is a top producing Patriot daughter that never misses.

LOT 66

Haroldson's JVI *Impact* 45P 19Z

MALE PC02968285 AFSY 19Z Feb 25, 2012

NJW FHF 9710 TANK 45P
DLF IEF HYF P C02924181

FHF 8403 STARBUCK 19H
GV 579 VICTORIA 9710

HAROLDSON'S LASSIE 13P 46T
P C02914289

REMITALL PATRIOT ET 13P
LRL LASSIE 4J 121M

CE: -2.5 BW: 4.3 WW: 46.3 YW: 76.3 MM: 21.5 TM: 44.7

BW: 95 lbs.

LOT 67

Haroldson's *Surge* T100 2Z

MALE PC02968277 AFSY 2Z Feb 8, 2012

SHF TAHOE R117 T100
P C02933797

SHF RIB EYE M326 R117 DLF IEF HYF
SHF LADY 512 L73

HAROLDSON'S WLC MIRA ET 30U
P C02934377

REMITALL PATRIOT ET 13P
HAROLDSON'S 37H MIRA ET 62K

CE: -2.0 BW: 3.8 WW: 60.0 YW: 100.9 MM: 17.1 TM: 47.1

BW: 87 lbs.

Surge is another example of the consistency there is with the mating of Tahoe and the Mira cow family. This guy is super stout and packed full of shape. He has a herd bull look with some extra extension. He is a big topped individual with tremendous spring of rib. The last one we tattooed 2Z worked out pretty well; I think Surge will too. Selling 3/4 Interest and Full Possession.



Surge T100 2Z

ELEMENT ET 38Z



TOP 68

Haroldson's *Element* ET 38Z

MALE PENDING AFSY 38Z MAR 15, 2012

TH 89T 743 UNTAPPED 425X ET CRR ABOUT TIME 743 DLF IEF HYF
DLF IEF HYF P C02960411 TH 16G 20N GEMINI 89T DLF IEF HYF

MHPH MS 68M GLORIA 1201R STAR AMERICA BNMHPH SS MKS 68M DLF IEF HYF
DLF IEF HYF P C02860871 GHC MISS VINDICATOR 69M DLF IEF HYF

CE: -0.8 BW: 4.6 WW: 48.0 YW: 77.8 MM: 19.4 TM: 43.4

BW: 90 lbs.

Element is a bull that I believe has an impressive future ahead of him. This bull is stout. He is a big topped individual with a great hip and tremendous amount of stifle. A great fronted bull with an appropriate look for a future herd sire. His strongest asset may be his mother; this cow is flawless and continually produces high quality offspring. When you think about her and then Untapped's mother (possibly the most prolific cow in Topp's herd), this combination becomes very interesting. Terms to be announced sale day.

DAM of lot 68 - Gloria 1201R



DAM of sire - Gemini 89T



BEEF-A-RAMA

TERMS:

The terms of the sale are cash or cheque, payable at par at the sale location. The right of property shall not pass until after settlement has been made; no invoicing on buyers in attendance unless previous arrangements have been made. Every animal sells to the highest bidder and in cases of disputes, the auctioneer's decision will be final. Announcements from the auction block will take precedence over the printed matter in the catalogue. Current exchange rates will be announced sale day. All monies are in Canadian funds.

CERTIFICATE OF REGISTRATION:

Each animal will carry papers issued by the Canadian Hereford Association. A certificate of registry duly transferred will be furnished to the buyer for each animal after payment has been made.

HEALTH:

All animals in the sale have met all necessary health requirements.

GUARANTEE:

Each animal becomes the purchaser's risk immediately after the animal is sold. All animals in this sale will be sold under the terms and guarantees set forth by the Canadian Hereford Association with regard to health, freedom from defects and from both reproductive and specific genetic unsoundness.

PREGNANCY INFORMATION:

All serviceable age females have been pregnancy examined by an accredited veterinarian, giving an estimated length of gestation. This estimated gestation period shall be used only as a guideline to calving and is not a guarantee of actual service.

Liabilities:

All persons attend the sale at their own risk. The seller, facility owner and sale manager assume no liability legal or otherwise, for any accidents that occur. It is understood that T Bar C Cattle Co. Ltd. is acting only as a medium between buyer and seller and is not responsible for any failure on the part of either party to live up to his obligations. Neither does T Bar C Cattle Co. Ltd. assume any financial obligations to collect or enforce collection of any monies between parties and any legal action that may in exceptional cases be taken must be between the buyer and the seller. T Bar C Cattle Co. Ltd. assumes no responsibility for any credit extended by the seller to the buyer. The buyer must look to the seller for fulfillment of all guarantees and representations made hereunder.

DELIVERY:

Every assistance will be given in getting your purchases home. Each animal becomes the risk of the purchaser as soon as sold.

PHONE, Mail, Wire Bids:

Bidders unable to attend the sale may phone, wire or mail their bids and instructions to the sale manager, auctioneer or special representatives. Bids must be received in sufficient time prior to the sale.

INSURANCE:

We strongly recommend that insurance is purchased for full value.

ERRORS:

All announcements at sale time, written or oral, supercede any written material in the catalogue.



CHAMPION STEER



GRAND AGGREGATE



Haroldson's WLC Rhino ET 48Y
Junior Champion Bull Calf
Owned with RSK Polled Herefords,
Greenridge Stock Farm,
Double J Polled Herefords, Scott Alta Farms,
and Moeskaer Polled Herefords



TL 5073 Jessica 751U and her bull calf
Haroldson's Liner 521X ET
Senior Champion Female
Owned with Wooden Shoe Farms



Haroldson's WS Jessica 4T 60X
Reserve Champion Yearling
Owned by Anita Doktor



TH 89T 743 Untapped 425X ET
Grand Champion Bull
Owned with ANL Polled Herefords,
Meadow-Acres Polled Herefords,
Phantom Creek Polled Herefords,
Brooks Farms and Topp Herefords



Haroldson's Polled Herefords
Premier Breeder



Blair Athol 161 Halle 42Y
2nd in class at the
World Hereford Conference Junior Show
for Cassandra Gorill



Blair Athol First Class 39X
As a 2 year old purchased in 2010



Blair Athol First Class 39X
Class winner at the
National Youth Beef Heifer Show
for Cassandra Gorill



Blair-Athol 20X Taylor ET 53Y
Supreme Champion Female, Glenavon Fair
Champion Female, Glenavon, MOE Show
for Kylee Dixon