

Blair-Athol Haroldsons & Friends

ROSELAWN Polled Herefords ~ Til-Toba Polled Herefords

Sunday, October 22, 2017

1:00 PM - Arcola, SK

Blair-Athol Haroldsons

1:00 p.m. SUNDAY, OCTOBER 22, 2017
AT THE FARM, ARCOLA, SK

Friends

Blair Athol



Blair Athol Farms
The Lees Family
Box 386, Arcola, SK
SOC OGO
blairatholfarms@sasktel.net
www.blairatholfarms.com

Duncan & Val
Ph/fax: 306-455-2619
C: 306-577-9703
**Jeff, Grace, Christin, Kylee,
Jackson, Hannah & Josie**
C: 306-577-1375

Haroldson's



Haroldson's Polled Herefords
Lenna, Kristy, Chad Wilson
Box 372, Wawota, SK S0G 5A0
C: 306-577-1256 Fax: 306-739-2902
chad_wilson79@hotmail.com
www.haroldsons.com

Roselawn



Roselawn Polled Herefords
Wally & Jackie Mitchell
Kailey, Nick, Logan & Hannah
Brady & Shandie
Box 782, Killarney, MB R0K 1G0
Ph: 204-523-8713
C: 204-534-8204
jmitchell@goinet.ca
www.roselawnfarms.com

Til-Toba



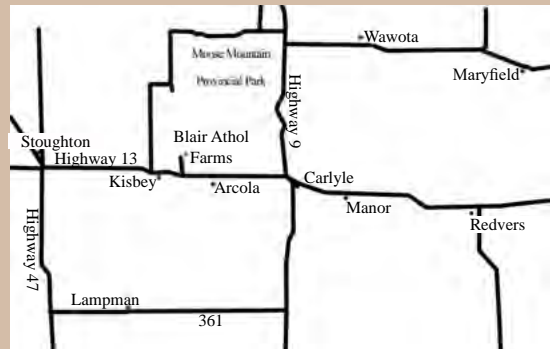
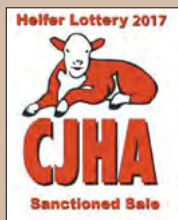
Til-Toba Polled Herefords
Ken & Judy Wray & Family
Box 65, Tilston, MB ROM 2B0
Ph/Fax: 204-686-2289
C: 204-522-6117
tiltoba@yahoo.com

BE A PART OF THE SASKATCHEWAN SWEEP "STEAKS"

Friday, October 20 – Hereford Harvest Sale – 2:00 p.m.
Saturday, October 21 – ANL Polled Herefords & Guests Sale – 1:00 p.m.
Saturday, October 21 – C & T "Take The Next Step" Sale – 5:00 p.m.
Sunday, October 22 – Blair-Athol/Haroldson's & Friends – 1:00 p.m.
October 23 – Square D Annual Production Sale – 1:00 p.m.

ATTENTION JUNIORS!

This offering is loaded with high quality show prospects that are backed with maternal power! We are willing to assist Juniors with getting your purchases to Bonanza 2018. We are willing to feed, breed, halter break, and arrange delivery to the show. Please contact any of the sale consignors for more details!!



4 miles west of Arcola,
3 miles north on RR
#2052

4 miles east of Kisbey,
3 miles north on RR
#2052

VIEW THE CATALOGUE ONLINE AT www.buyagro.com

From the desk at T Bar...

October 22nd marks the twentieth anniversary for Blair Athol/Haroldsons and Friends Annual Female Sale... a seed stock event that has influenced the Polled Hereford industry around the globe. October 22nd will also be the last sale for Ken Wray and his family at Til-toba Polled Herefords, as they retire from the livestock industry.

Each year visiting the host farm, Blair Athol, we drive by Jeff's house on the way to the sale barn, built in 1905; the same year that the Province of Saskatchewan joined confederation... an amazing heritage. The Lees family has been in the Hereford breed dating back to the early 1900's and a great influence in Southeastern Saskatchewan. When we look at the last generation, I always think of the influence that Duncan and Val Lees had influencing the Hereford youth of our nation. I believe that they have attended nearly every Bonanza, sold heifer calves, loaned heifer calves and in their generous way, touched many members of the Canadian Junior Hereford Association. Now, as proud grand-parents, they continue the promotion of youth in agriculture for which we owe a vote of gratitude. Thanks Duncan and Val!

For a twentieth anniversary gift, the gemstone is an emerald and after previewing the offering, I believe that this is the finest set of gems put forth by these breeders. Blair-Athol comes loaded with the best set of bred heifers ever and we cannot over shadow the show prospects! Wally, from Roselawn, offers his top replacements with exciting services...true cow herd building material. Ken Wray, this being his final hurrah... kept the "best for last" to celebrate his twentieth.

There is little to say regarding Haroldson's... this soft spoken Hereford breeder has built a program where the cattle do the talking... loud talking... check out the Premier Breeder awards collected in the last decade. Chad and his family have become breed leaders.... check out his offering... it is the deepest ever.

For those who are serious about breeding and producing quality Polled Herefords, attending this sale should be on the top of your list. Opportunities abound whether you are a junior or a seasoned veteran; plan to be with us and move your program forward...it will be well worth the trip!

If we, at T Bar C, may be of any assistance, prior to or sale day, do not hesitate to call anyone from the T Bar team, as they will be pleased to assist you in a professional manner.

- Chris Poley



Chris Poley
306-220-5006



Ted Serhienko
306-221-2711



Shane Michelson
403-363-9973



Ben Wright
519-374-3335

Sale Management



Box 2330 Warman, Saskatchewan S0K 4S0
Ph. 306-933-4200 Fax 306-934-0744
info@tbarc.com www.buyagro.com

Sale Day Phones

Ted Serhienko	306-221-2711
Chris Poley	306-220-5006
Shane Michelson	403-363-9973
Ben Wright	519-374-3335

Sale Staff

Auctioneer:
Chris Poley 306-220-5006

Ringside:
Ted Serhienko, T Bar C Cattle Co. 306-221-2711
Shane Michelson, T Bar C Cattle Co. 403-363-9973
Ben Wright, T Bar C Cattle Co. 519-374-3335
Levi Landers, American Hereford Assoc. 308-730-1396

Marketing Agents:

Marc Hotchkiss, Hereford America 605-490-1513
Jacob Onyschuk, Canadian Hereford Assoc. 403-275-2662

Trucking
H.S. Knill
877-422-3106

Insurance:
Alameda Agencies Ltd.
Bonnie Thompson
306-489-2258

PLEASE JOIN US FOR LUNCH SALE DAY!

WATCH FOR VIDEOS OF ALL THE LOTS AT www.dvauction.com OR www.buyagro.com

Sale Representatives

Canadian Hereford Association
Doug Mann, President
Albert Rimke, Vice President
Stephen Scott, General Manager

Saskatchewan Hereford Association
Stephen Myer, President
Lyal Heidecker, Vice President
Marilyn Charlton, General Manager

Manitoba Hereford Association
Steven Manns, President
Doug Troop, Vice President
Vivian Jones, Secretary

Hotel Accommodations

Bear Claw Casino & Hotel, Carlyle, SK (Sale Headquarters)	306-577-4588
Days Inn, Estevan, SK	306-634-6456
Perfect Inn & Suites, Estevan, SK	306-634-8585
Kenosee Inn, Kenosee, SK	306-577-2099
Ramada, Carlyle, SK	866-654-7128 or 306-453-2686
Western Star Inns & Suites, Carlyle, SK	306-453-2700
Chaparral Inn, Arcola, SK	306-455-2275
Poplar Tree Inn, Stoughton, SK	306-457-3540
Western Star Inn & Suites, Stoughton, SK	306-457-3000

*Please call directly to the accommodation of your choice.

REMEMBER ACCOMMODATIONS ARE AT A PREMIUM – SO BOOK EARLY!

Watch and bid live at:

DVAuction
Broadcasting Real-Time Auctions

Visit www.DVAuction.com
and Register Today!

For General Questions Please Contact Our Office:
(402) 316-5460 or support@dvauction.com

Blair-Athol Farms

We think our group of heifer calves are as good as we have ever offered for sale. All of them are good enough to "Take To Town," either this fall or next summer, specifically 'Bonanza' in Quebec. We would like to reserve show rights on all heifer calves until after Agribition 2017, our show string will be finalized following the sale.

CHARISMA 119E



*Selling
Choice*

BW: 98 lbs.

I don't know if I have ever been as excited about two heifer calves. Can't part with them both so you get to choose. Charisma 119E is just an April heifer but to see her, you would never know it. So complete in her body type; wide from behind, sharp from the front and massive from the side. Every foot in the right place. She knows she's good. Her dam, 13Y, is also the dam of our junior herd sire, Make My Day 30D.

LOT 1A

Blair-Athol 50 *Charisma 119E*
Female PC03035821 DVL 119E Apr 9, 2017

REMITALL-W 50 SHADES ET 12C
DLF IEF HYF PC03009427

BOYD BANKER 0015 ET
REMITALL MARVEL 78T DLF IEF HYF

GHC MISS DEW ET 13Y
DLF IEF HYF PC02963999

GHC VOLUME III ET 139S
GHC MISS NANCY 98P DLF IEF HYF

CE: -1.9 BW: 4.3 WW: 62.1 YW: 99.5 MM: 27.6 TM: 58.6

LOT 1B

RU BA 156C *Beyonce' 271E*
Female PC03035832 EKD 271E Mar 16, 2017

NJW 103Y 174X DIABLO 156C ET
PC03026212

NJW 76S 4037 DURANGO SPIRIT 174X DLF IEF HYF
NJW 101U 100W SPIRITQUEEN103Y

GHC MISS UNIQUE 105Y
PC02953972

BBSF 101N WRANGLER 29W DLF IEF HYF
GHC MISS CARLA 66M

CE: -0.6 BW: 5.4 WW: 56.0 YW: 100.8 MM: 25.9 TM: 53.9

BEYONCE' 271E



BW: 92 lbs.

Beyonce 271E is the first Diablo 156C daughter to sell. The kind you can't take your eyes off. Tremendous length of body, exploding into a quarter that is square and deep. Her neck extension and smoothness into her shoulder goes unrivalled.

Maternal sister to Cinnamin 230B, our high selling heifer calf in 2014 to Harvey and Beth MacKay, and maternal sister to Lot 16. She will be in the hunt in the show ring. Better yet, she will be a brood cow to build around.

Owned with Robert Bestrop



DAM of 44E



TIME TRAVELER 480 - FULL BROTHER

BW: 87 lbs.

An interesting female to be sure. Ramona is loaded with meat and muscle, stout enough to mother herd bulls or she could be that Hereford part of the puzzle to mother some show steers. She is a full sibling to the 2016 Denver Grand Champion and World Champion, LCC FBF Time Traveler 480.



RAMONA 44E

LOT 2

Blair-Athol 0124 *Ramona* ET 44E
Female Applied For DVL 44E Mar 5, 2017

LOT 3

Blair-Athol 7B *Heidi* 18E
Female PC03034782 DVL 18E Feb 14, 2017

RST TIME'S A WASTIN' 0124
DLF IEF HYF C02991851

CRR ABOUT TIME 743 DLF IEF HYF
RST MS 1000 BLAZER 2029 DLF IEF HYF

REMITALL-W START ME UP ET 7B
DLF IEF HYF PC02995914

CB 57U CAN DOO 102Y DLF IEF HYF
REMITALL-WEST MARVEL ET 76Y DLF IEF HYF

JB REMETEE 213
DLF IEF HYF P43056323

PURPLE MILSAP 45S DLF IEF HYF
WPH BAILEY 3P DLF IEF

BLAIR-ATHOL 6L HEIDI 88P
PC02849986

RU 25C LEE 6L
BAR-RZ 909E HEIDI 85H

PE CE: 3.9 BW: 2.5 WW: 54.9 YW: 91.8 MM: 17.1 TM: 44.5

CE: -0.5 BW: 3.7 WW: 46.6 YW: 79.1 MM: 19.7 TM: 43.0

BW: 82 lbs.

If Duncan wasn't supposed to have less cows and Jeff didn't want more, Heidi 18E would stay right here. Also the decision is a little easier, as we have four Start Me Up daughters to calve in 2018. The Heidi cows, going back to Bar RZ 85H are among the best we own. In her own right, Heidi 18E has the look, lots of grow, lots of thickness and a powerful rib cage. Red eyes and dark color complete the package. She should be fun to lead next summer.



HEIDI 18E

JENNY 6E



BW: 91 lbs.
The first Rimrock daughter offered by public auction. She shows as much width over the top and quarter down into her stifle, as I have ever seen in a Hereford female. To add to her overall look, she is as sweet through her neck and head as you could ever ask for. Her grand dam was the lead off cow in the MicGil dispersal and went on to do a wonderful job at Blair Athol.

LOT 4

Blair-Athol 27C *Jenny 6E*

Female PC03034899 DVL 6E Jan 31, 2017

NJW 73S 38W RIMROCK 27C ET
PC03026211

NJW 76S P20 BEEF 38W ET
NJW P606 72N DAYDREAM 73S DLFIEFHYF

BLAIR-ATHOL 70X ORCHID 102A
PC02984109

STAR MARKET INDEX 70X ET DLF IEF HYF
MICGIL'S RAY-LENE 36N 36T

CE: -0.4 BW: 4.2 WW: 53.9 YW: 90.0 MM: 24.9 TM: 51.8

LOT 5

Blair-Athol 27C *Raquel 5E*

Female PC03034898 DVL 5E Jan 31, 2017

NJW 73S 38W RIMROCK 27C ET
PC03026211

NJW 76S P20 BEEF 38W ET
NJW P606 72N DAYDREAM 73S DLFIEFHYF

BLAIR-ATHOL 0220 SECRET 162B
PC03012135

BOYD MASTERPIECE 0220
NBG 4R VICTORIA 22W 2A

CE: -0.4 BW: 4.0 WW: 54.6 YW: 89.2 MM: 30.2 TM: 57.5

RAQUEL 5E



BW: 88 lbs.
Must have caught Jeff at a weak moment when he agreed to let these two Rimrock heifer calves go. The first two heifer calves sired by Rimrock and "what a start." As nice a set of calves by one sire ever born at Blair Athol. 5E is loaded with mass and performance, easy doing and broody. Short marked, red eyed and explosive in her overall capacity. Her dam, 162B, was our high selling bred in 2016 selling to Lyle Cowan for \$13,500.00. He then leased her back to Jeff, Grace and the grand kids. Thank you Lyle!



HANNAH 36E

BW: 90 lbs.

Probably our best Hometown daughter born this year. The Hometown daughters are easy fleshing and quiet, udder type and milk are hard to beat. Problem free is a good adjective. 36E goes back to Jensen 5P. We have six generations of the 5P family in our herd. Hannah 36E has big red eyes, lots of capacity and style. Almost certain to see city life on the end of a halter. Bill Potts from Morse has a full brother. Step up on this one, Jeff has mentioned he won't be selling any more out of this cow family.

LOT 6

Blair-Athol 10Y *Hannah* 36E

Female PC03035827 DVL 36E Feb 28, 2017

NJW 73S W18 HOMETOWN 10Y ET
DLF IEF HYF PC02987562

SHF WONDER M326 W18 ET DLF IEF HYF
NJW P606 72N DAYDREAM 73S DLF IEF HYF

BLAIR-ATHOL 161 GOLDEN EYE 77Y
PC02957336

REMITALL HEATER 161U DLF IEF HYF
BLAIR-ATHOL RIBEYE GAL 107W

CE: 1.5 BW: 5.0 WW: 63.0 YW: 107.9 MM: 30.0 TM: 61.5

LOT 7

Blair-Athol 43C *Flirt* 17E

Female PC03034925 DVL 17E Feb 14, 2017

REMITALL-W BNC ACE 43C
DLF IEF HYF PC03006661

TH 512X 719T PLAYMAKER 14Z
REMITALL-WEST MARVEL ET 5Z DLF IEF HYF

AIRRIESS-ACRES PROMISCUOUS 6C
C03006633

BOYD MASTERPIECE 0220
MA 744T GWEN 130T 72Y

CE: -3.1 BW: 4.3 WW: 57.2 YW: 95.0 MM: 26.0 TM: 54.6



FLIRT 17E

BW: 96 lbs.

Flirt 17E is the first calf born at Blair Athol sired by our Junior herd sire, Ace. Ace is a Playmaker out of a full sister to Gameday, World Hereford Conference Grand Champion Bull. Her two year old dam, 6C, was purchased from Trevor and Sarah Airiess at Wadena. The heifer has extra length and style. I predict she will get better every day you own her.

PAMELA 84E



BW: 94 lbs.

One of two Plainsman heifer calves selling. Real thick and soft made, stout and square from end to end. You never catch her with her head down. She is so ready for leather. Poley loved this heifer calf when he visited in August. Her dam, 54Z, does not miss! Maternal sister to 7B (dam of lot 20) at Blair Athol and herd bulls to Aqua Hollow and Dwayne and Bonnie Brown. This one might be the best yet.

LOT 8

Blair-Athol 946 *Pamela* 84E

Female PC03035836 DVL 84E Mar 22, 2017

SQUARE-D PLAINSMAN 946Y
DLF IEF HYF PC02958214

SQUARE-D RANCHMAN 257R DLF IEF HYF
SQUARE-D JAEDEN 846U DLF IEF HYF

GHC LRL MISS UNIQUE 54Z
PC02970925

BBSF 101N WRANGLER 29W DLF IEF HYF
TCF KLR TREASURE 17T DLF IEF HYF

CE: -3.0 BW: 6.3 WW: 58.3 YW: 93.8 MM: 21.4 TM: 50.6

LOT 9

Blair-Athol 946 *Posh* 102E

Female PC03035839 DVL 102E Apr 3, 2017

SQUARE-D PLAINSMAN 946Y
DLF IEF HYF PC02958214

SQUARE-D RANCHMAN 257R DLF IEF HYF
SQUARE-D JAEDEN 846U DLF IEF HYF

NBG 4R VICTORIA 22W 2A
PC02981526

MSU TCF REVOLUTION 4R DLF IEF HYF
MEADOW-ACRES RL ADA ET 22W

CE: -2.5 BW: 5.8 WW: 63.5 YW: 100.2 MM: 21.3 TM: 53.1

Posh 102E



BW: 85 lbs.

April show prospect by Plainsman. Dark colored and fancy. You can show her and turn her into a brood cow. She will be at home and productive either way. Maternal sister to the dam of Lot 5. Check her out and the decision to buy Posh 102E will be simplified.



BAILEY 2D

BW: 76 lbs.
 Feature bred heifer. Tremendous length and body mass, combined with a beautiful broody front end. 'Stockman' daughters look good. Her dam, 232B was purchased by Randy Hall for \$7,500.00 and leased back to us. Bailey 2D makes her dam look very reasonable.
 Bred to NJW 103Y 174X Diablo 156C ET on May 13, 2017. Pasture exposed to NJW 103Y 174X Diablo 156C ET from May 18 to August 17, 2017. Due to calve on February 21, 2018.
 Owned with Randy Hall

10 BLAIR-ATHOL GMPH 475 *Bailey 2D* DLF IEF HYF
 Female PC03029469 DVL 2D Jan 31, 2016

TH 89T 755T STOCKMAN 475Z
 PC02991023

RU BA BAILEY'S TIME 232B
 PC02996999

CE: -5.6 BW: 6.4 WW: 70.5 YW: 122.5 MM: 21.9 TM: 57.2

TH 223 71I VICTOR 755 DLF IEF HYF
 TH 16G 20N GEMINI 89 DLF IEF HYF

RST TIME'S A WASTIN' 0124 DLF IEF HYF
 RU BA HOT ROSIE 227X

11 BLAIR-ATHOL 101N *Haley 70D*
 Female PC03024624 DVL 70D Mar 17, 2016

BLAIR-ATHOL 13K MAJOR 101N
 DLF IEF HYF PC02849990

BLAIR-ATHOL 946 HAYLEE 106B
 PC02996325

CE: -1.6 BW: 6.0 WW: 54.1 YW: 92.6 MM: 29.3 TM: 56.4

BLAIR-ATHOL 65F ON LINE 13K
 BLAIR-ATHOL 25C AMIGA 20K

SQUARE-D PLAINSMAN 946Y DLF IEF HYF
 HAROLDSON'S HAYLEE 68M 66P



HALEY 70D

BW: 80 lbs.
 Red neck, deep ribbed, Major daughter. Not much needs to be said. They have made great cows wherever they are! Same cow family as donor dam, Haylee 39U, at Remittal West.
 Bred to NJW 73S 38W Rimrock 27C ET on June 9, 2017. Pasture exposed to NJW 103Y 174X Diablo 156C ET from July 1 to August 17, 2017. Due to calve March 20, 2018.

AVA 4D



BW: 82 lbs.
 Love this Stud heifer. Smooth made and straight in her lines, with plenty of rib shape. The Stud females are outstanding. Her dam isn't very big but knows how to work!
 Pasture exposed to Mohican Lux 68D, our Junior herd sire, from May 27 to August 24, 2017. Due to calve early March 2018.

LOT 12

Blair-Athol CS *Ava* 4D
 Female PC03022788 DVL 4D Feb 2, 2016

CHURCHILL STUD 3134A
 PC03013665

KJ HVH 33N REDEEM 485T ET DLF IEF HYF
 CHURCHILL LADY 002X ET

WMB 414Y'S JOY 121B
 PC02998209

MHPH 9W YOUNGBLOOD 414Y DLF IEF HYF
 WMB 43U'S JOY 109Z DLF IEF HYF

CE: -0.8 BW: 5.0 WW: 58.4 YW: 99.9 MM: 22.5 TM: 51.7

LOT 13

Blair-Athol 60Z *Tamara* 44D
 Female PC03024001 DVL 44D Mar 4, 2016

BBSF 719T ZACH 60Z
 DLF IEF HYF PC02970591

TH 122 71I VICTOR 719T DLF IEF HYF
 BBSF 52U FAWN 22X DLF IEF HYF

BLAIR-ATHOL TAMMY ON TAP 2B
 PC02997122

TH 89T 743 UNTAPPED 425X ET DLF IEF HYF
 MA 744T TAMMY 30U 42Y DLF IEF HYF

CE: 0.5 BW: 4.4 WW: 56.5 YW: 94.7 MM: 25.2 TM: 53.5

TAMARA 44D



BW: 83 lbs.
 Fleshy and sexy! Lots of shape, both over the top and in her rib cage. The Zach daughters are gorgeous in their udder type and milk flow. Freckles and pigment enhance her value.
 Bred to NJW 73S 38W Rimrock 27C ET on May 18, 2017. Pasture exposed to NJW 103Y 174X Diablo 156C ET from June 24 to August 17, 2017. Due to calve February 26, 2018.

LOT 14

Blair-Athol 946 *Sweetie* 65D

Female PC03024617 DVL 65D Mar 14, 2016

SQUARE-D PLAINSMAN 946Y
DLF IEF HYF PC02958214

SQUARE-D RANCMAN 257R DLF IEF HYF
SQUARE-D JAEDEN 846U DLF IEF HYF

BLAIR-ATHOL 161 LASHES 54Z
PC02970048

REMITALL HEATER 161U DLF IEF HYF
BLAIR-ATHOL 19M PEBBLES 22S

CE: -1.8 BW: 4.9 WW: 59.4 YW: 85.4 MM: 17.0 TM: 46.7

BW: 83 lbs.

Really have to admire the way this heifer puts it all together. Square from one end to the other, lots of rib shape and very feminine. "A real sweetie!"

Bred to Mohican Lux 68D on May 16, 2017. Pasture exposed to Blair Athol 7B Make My Day 30D from June 24 to August 16, 2017. Due to calve on February 24, 2018.



SWEETIE 65D

LOT 15

Blair-Athol 475Z *Saffron* 15D

Female PC03023025 DVL 15D Feb 23, 2016

TH 89T 755T STOCKMAN 475Z
PC02991023

TH 223 71I VICTOR 755 DLF IEF HYF
TH 16G 20N GEMINI 89T DLF IEF HYF

BLAIR-ATHOL 0124 SAFFRON 37B
PC02996460

RST TIME'S A WASTIN' 0124 DLF IEF HYF
BLAIR-ATHOL 13 KISSES 17T DLF IEF HYF

CE: 0.2 BW: 5.2 WW: 62.6 YW: 108.5 MM: 18.2 TM: 49.5

BW: 80 lbs.

This Stockman gives up some size compared to lots 10 and 16. But that won't make a difference when she comes into production! One of our best cow families ever.

Bred to Blair Athol Classic 53U on May 8, 2017. Pasture exposed to NJW 103Y 174X Diablo 156C ET from June 24 to August 17, 2017. Due to calve on February 16, 2018.



SAFFRON 15D

LOT 16

RU BA 475Z *Cowgirl* 212D

Female PC03023023 EKD 212D Feb 21, 2016

TH 89T 755T STOCKMAN 475Z
PC02991023

TH 223 71I VICTOR 755 DLF IEF HYF
TH 16G 20N GEMINI 89T DLF IEF HYF

GHC MISS UNIQUE 105Y
PC02953972

BBSF 101N WRANGLER 29W DLF IEF HYF
GHC MISS CARLA 66M

CE: -3.4 BW: 7.4 WW: 66.2 YW: 118.4 MM: 22.9 TM: 56.0

BW: 92 lbs.

Another Stockman 475Z daughter. If you like your cows big and roomy, then this is the one to buy. Massive in structure, while still maintaining the brood cow look. Maternal sister to Cinnamin 230B, a many times champion and now a top brood cow for Blair Athol and Harvey and Beth McKay. Check out her little sister, our choice lot 1B. Keep in mind, Cowgirl is bred 'Diablo.' She could knock one out of the park!

Bred to NJW 103Y 174X Diablo 156C ET on May 6, 2017. Pasture exposed to NJW 103Y 174X Diablo 156C ET from May 18 to August 17, 2017. Due to calve on February 14, 2018.

Owned with Robert Bestrop



Cowgirl 212D

SUSAN 114D



LOT 17

Blair-Athol 60Z *Susan* 114D
Female PC03026176 DVL 114D Apr 8, 2016

BBSF 719T ZACH 60Z
DLF IEF HYF PC02970591

TH 122 71I VICTOR 719T DLF IEF HYF
BBSF 52U FAWN 22X DLF IEF HYF

BLAIR-ATHOL SOLID SUSAN 123X
PC02944432

BLAIR-ATHOL 6 SOLID 131T
RU 65F LATEX 47L

CE: 0.2 BW: 5.7 WW: 59.7 YW: 99.3 MM: 23.7 TM: 53.6

BW: 97 lbs.

Powerful, long spined and broody. Many will score this female high. Jeff's pick of the breds.

Bred to NJW 103Y 174X Diablo 156C ET on May 15, 2017. Pasture exposed to NJW 103Y 174X Diablo 156C ET from May 18 to August 17, 2017. Due to calve on February 23, 2018.

Lila 95D



LOT 18

Blair-Athol CD *Lila* 95D
Female PC03024674 DVLC 95D Mar 30, 2016

BBSF 719T ZACH 60Z
DLF IEF HYF PC02970591

TH 122 71I VICTOR 719T DLF IEF HYF
BBSF 52U FAWN 22X DLF IEF HYF

JAC LEADA 23Y
PC02957788

BLAIR-ATHOL CLASSIC 53U
JAC LEADA 13W

CE: 2.0 BW: 4.5 WW: 54.9 YW: 97.8 MM: 22.0 TM: 49.5

BW: 85 lbs.

Christin's heifer, the fourth good heifer in a row out of 23Y. Previous daughters have sold to Kazakstan, Batho Farms and Wascana Cattle. You will love the design of this female. Overall length, square hipped, lots of rib, with that 'cow' look. There aren't enough Zach daughters around!

Pasture exposed to NJW 103Y 174X Diablo 156C ET from May 18 to August 17, 2017. Due to calve late February/early March 2018.

Zelda 100D



LOT 19

Blair-Athol 60 *Zelda* 100D
Female PC03025711 DVL 100D Apr 4, 2016

BBSF 719T ZACH 60Z
DLF IEF HYF PC02970591

TH 122 71I VICTOR 719T DLF IEF HYF
BBSF 52U FAWN 22X DLF IEF HYF

BLAIR-ATHOL 103 DIANE 33U
PC02916114

BLAIR-ATHOL BOND DIRECT 103P
BLAIR-ATHOL 122L DEE 13R

CE: 3.3 BW: 2.5 WW: 47.1 YW: 86.7 MM: 23.3 TM: 46.9

BW: 87 lbs.

Zach x Bond Direct. Fifth generation Blair Athol cows; consistent, never miss cow family. Could be the sleeper.

Pasture exposed to NJW 103Y 174X Diablo 156C ET from May 18 to August 17, 2017. Due to calve late February/early March 2018.

LOT 20

Blair-Athol 53U *Treasure* 68D

Female PC03024622 DVL 68D Mar 16, 2016

BLAIR-ATHOL CLASSIC 53U
PC02916096

MHCVB 68M PROWLER 118P
RU 65F KIMBERLY 31K DLF IEF HYF

BLAIR-ATHOL M EUNICE 7B
PC02997001

BOYD MASTERPIECE 0220
GHC LRL MISS UNIQUE 54Z

CE: -3.1 BW: 6.6 WW: 55.3 YW: 92.7 MM: 23.7 TM: 51.4

BW: 82 lbs.

Big powerful Classic x Masterpiece – milk should be a lock. Throw in Wrangler 29W, Ribeye, P606 and Future, the pedigree is immaculate. Red eyes and freckle faced to boot.

Bred to Mohican Lux 68D on May 7, 2017. Exposed to Mohican Lux from May 27 to August 24, 2017. Due to calve early March 2018.



TREASURE 68D

LOT 21

Blair-Athol 161 *Tequila* 108D

Female PC03026180 DVL 108D Apr 6, 2016

REMITALL HEATER 161U
DLF IEF HYF PC02909574

BNMHPH 13P HEAT 101S DLF IEF HYF
RU 2M DEBRA 141P

RVP 158W ZEAL 71Z
DLF IEF HYF PC02971399

STAR TCF SHOCK & AWE 158W ET DLF IEF HYF
STAR MKS SHINING STAR 4W ET

CE: -3.8 BW: 5.3 WW: 54.5 YW: 83.4 MM: 18.3 TM: 45.6

BW: 85 lbs.

One of only two Heater daughters to sell this year. Very balanced, extension throughout, hip shape and rib shape. If I was to keep just one bred, Tequila 108D would probably be my pick! You will find her; try to own her. Maternal sister sold to Arnolds in North Dakota where she is doing a great job.

Pasture exposed to NJW 103Y 174X Diablo 156C ET from May 18 to August 17, 2017. Due to calve mid March 2018.



Tequila 108D

LOT 22

Blair-Athol 131T *Glam* 93D

Female PC03024672 DVL 93D Mar 29, 2016

BLAIR-ATHOL 6 SOLID 131T
PC02908586

RU 25C LEE 6L
BLAIR-ATHOL 20 GRETCHEN ET 36R

BLAIR-ATHOL 5P GLAMOUR 101T
PC02900647

RU 60M PRESIDENT 5P
RU 102L GLAMOUR 76R

CE: -4.1 BW: 8.7 WW: 57.5 YW: 96.4 MM: 12.3 TM: 41.1

BW: 103 lbs.

Solid daughter out of a big, roomy, Rafter U bred cow that always throws extra size. Big barreled and broody. We love the job the Solid daughters are doing. A bull that should have been used more!

Pasture exposed to NJW 103Y 174X Diablo 156C ET from May 18 to August 17, 2017. Due to calve late February/early March 2018.



Glam 93D

Blair-Athol Farms

HALLE 133D



Ada 222D



JESSIE 161U 6D



RITA 38D



LOT 23

Blair-Athol 60Z *Halle* 133D

Female PC03025943 DVL 133D Apr 21, 2016

BBSF 719T ZACH 60Z
DLF IEF HYF PC02970591

TH 122 71I VICTOR 719T DLF IEF HYF
BBSF 52U FAWN 22X DLF IEF HYF

JAC HAYLE 56T
PC02902923

BLAIR-ATHOL 65F ON LINE 13K
MAYVIEW 46D HAYLE 27H

CE: 2.0 BW: 3.8 WW: 43.8 YW: 76.3 MM: 21.9 TM: 43.8

BW: 86 lbs.

Another Zach daughter with that length and femininity so evident in all his daughters. Bred to Mohican Lux 68D on May 13, 2017. Pasture exposed to Mohican Lux from May 27 to August 24, 2017. Due to calve February 21, 2018.

LOT 24

RU BA 946Y *Ada* 222D

Female PC03023029 EKD 222D Feb 28, 2016

SQUARE-D PLAINSMAN 946Y
DLF IEF HYF PC02958214

SQUARE-D RANCHMAN 257R DLF IEF HYF
SQUARE-D JAEDEN 846U DLF IEF HYF

BLAIR-ATHOL 161 ADA 27A
PC02984264

REMITALL HEATER 161U DLF IEF HYF
MA 13K ADA 25W 21Y

CE: -1.1 BW: 5.6 WW: 64.2 YW: 98.0 MM: 20.6 TM: 52.7

BW: 82 lbs.

Lots of growth and length in this female coming out of the Ada family from the Meadow Acres Hereford herd. Pasture exposed to Blair Athol 7B Make My Day 30D from June 24 to August 16, 2017. Observed bred on July 2, 2017. Make My Day was Grand Champion Bull at 2016 Zone Field Day and used heavily at Blair Athol this summer. Due to calve April 12, 2018. Owned with Robert Bestrop.

LOT 25

Micgil's *Jessie* 161U 6D

Female PC03025218 GP 6D Mar 19, 2016

REMITALL HEATER 161U
DLF IEF HYF PC02909574

BNMHPH 13P HEAT 101S DLF IEF HYF
RU 2M DEBRA 141P

MICGIL'S JESSIE 59P 79S
PC02887943

MICGIL'S GIBSON 37H 59P
MICGIL'S JESSIE 46K 53N

CE: -0.9 BW: 4.6 WW: 52.6 YW: 90.0 MM: 13.2 TM: 39.5

BW: 83 lbs.

Big yellow Heater daughter with lots of grow and hair. The Heater udders are very good; small teats, upright udders with good milk. Doug Troop has a full sister. Pasture exposed to NJW 103Y 174X Diablo 156C ET from May 18 to August 17, 2017. Due to calve April 2018. Owned with MicGil Polled Herefords

LOT 26

Blair-Athol 36N *Rita* 38D

Female PC03023950 DVL 38D Mar 2, 2016

HF 4L BEYOND 36N
PC02828255

FCC 60G MADDUX 4L
MISS 87D FORTUNE 707B 67J

BLAIR-ATHOL BD RITA 93W
PC02930306

BLAIR-ATHOL BOND DIRECT 103P
RU 42F LADY 9L

CE: -5.8 BW: 5.1 WW: 49.8 YW: 85.9 MM: 19.3 TM: 44.2

BW: 86 lbs.

Very eye appealing, nicely balanced, Beyond daughter. Lots of mothering ability with milk, and udder quality is a sure thing in this cow family. Bred to NJW 103Y 174X Diablo 156C ET on May 8, 2017. Pasture exposed to NJW 103Y 174X Diablo 156C ET from May 18 to August 17, 2017. Due to calve February 16, 2018.

Ref NJW 73S 38W *Rimrock* 27C ET DLF IEF HYF
Male PC03026211 73S 27C Feb 5, 2015

NJW 76S P20 BEEF 38W ET SHF PROGRESS P20
DLF HYF IEF P43002917 NJW 55N STARDUST 76S

NJW P606 72N DAYDREAM 73S PW VICTOR BOOMER P606
DLF HYF IEF P42693956 NJW 94J DEW 72N DLF HYF IEF

CE: 3.5 BW: 2.0 WW: 48.0 YW: 77.1 MM: 35.4 TM: 59.4

2 Services and 2 Daughters Sell
Owned with Glenlees Farm.



Rimrock 27C ET

Ref NJW 103Y 174X *Diablo* 156C ET DLF IEF HYF
Male PC03026212 103Y 156C Feb 27, 2015

NJW 76S 4037 DURANGO SPIRIT 174X THM DURANGO 4037 DLF HYF IEF
DLF HYF IEF P43092746 NJW 55N STARDUST 76S

NJW 101U 100W SPIRITQUEEN103Y NJW 73S M326 TRUST 100W ET DLF HYF IEF
P43214365 NJW 4037 55N FREE SPIRIT 101U

CE: 3.5 BW: 2.1 WW: 52.6 YW: 94.2 MM: 28.1 TM: 54.4

9 Services and 1 daughter sells
Owned with Glenlees Farm



Diablo 156C ET

Ref Blair-Athol 7B *Make My Day* 30D
Male PC03022881 DVL 30D Feb 29, 2016

REMITALL-W START ME UP ET 7B CB 57U CAN DOO 102Y DLF IEF HYF
DLF IEF HYF PC02995914 REMITALL-WEST MARVEL ET 76Y DLF IEF HYF

GHC MISS DEW ET 13Y GHC VOLUME III ET 139S
DLF IEF HYF PC02963999 GHC MISS NANCY 98P DLF IEF HYF

CE: -3.3 BW: 6.6 WW: 65.4 YW: 101.5 MM: 26.2 TM: 58.9

1 Service Sells



MAKE MY DAY 30D

Ref Mohican *Lux* 68D
Male P43690497 68D Feb 17, 2016

NJW PMH 66X 156T LUX 206A ET CMR GVP MR MATERNAL 156T DLF IEF HYF
DLF IEF HYF P43460921 NJW 78P 4037 LUXURY 66X ET DLF IEF HYF

MOHICAN VICKY Z5 TH 133U 719T UPGRADE 69X DLF IEF HYF
DLF IEF HYF P43293169 MOHICAN VICKY 25X DLF IEF HYF

CE: 2.9 BW: 2.5 WW: 59 YW: 95 MM: 26 TM: 55

4 Services sell



Lux 68D

Til-Toba Polled Herefords

EXTRA 46B 1E



LOT 27

Til-Toba *Extra* 46B 1E
Female PC03035883 WRAY 1E Jan 3, 2017

BW: 86 lbs.

1E is a very thick, long bodied, broody heifer calf. Her mother is a three year old Hometown daughter we purchased from Medonte last fall. This young cow did an excellent job on her calf.

MHPH 521X ACTION 106A
DLF IEF HYF PC02982798

TH 122 71I VICTOR 521X ET DLF IEF HYF
MHPH 301W DAINTY 205Y DLF IEF HYF

ELM-LODGE BREATHTAKING 46B
DLF IEF HYF PC02995490

NJW 73S W18 HOMETOWN 10Y ET DLF IEF HYF
ELM-LODGE 5D WELL BUILT 55W

PE CE: -0.7 BW: 3.8 WW: 60.0 YW: 97.9 MM: 29.0 TM: 59.0

Dori 39S 2D



LOT 28

Til-Toba *Dori* 39S 2D

Female PC03023259 WRAY 2D Feb 27, 2016

MOHICAN REDEEM 402B
PC03003100

KJ HVH 33N REDEEM 485T ET DLF IEF HYF
MOHICAN LUCKY LADY 107L

TIL-TOBA STAR 31K 39S
PC02884592

CPH LAWMAN 9L
TIL-TOBA FANNY 15G 31K

CE: 0.3 BW: 2.7 WW: 44.2 YW: 73.2 MM: 17.5 TM: 39.6

BW: 79 lbs.

Dori 2D is one of the first daughters out of the Mohican Redeem 402B son. She is a long bodied, feminine heifer.

Exposed to KWHF Diesel 303D, who is a very solid Revolution grandson, from May 14 to August 10, 2017. Preg checked to calve approximately March 10, 2018.

LOT **29**

Til-Toba *Danielle* 27T 3D

Female PC03023252 WRAY 3D Mar 3, 2016

WSF CAN-AM PRINCE 143
DLF IEF HYF PC02965685

RVP STAR 533P CAN-AM ET 57U
THM 711 PRINCESS PRIME 8695 DLF IEF HYF

MIL-WRAY ROSE 27T
PC02895714

SBS 57G RADAR 32K
TIL-TOBA MYRNA 40H 20L

CE: -1.6 BW: 3.4 WW: 48.3 YW: 80.4 MM: 14.7 TM: 38.9

BW: 82 lbs.

Danielle is a dark red heifer that is fully pigmented. She is a very clean fronted, structurally sound heifer. The Can-Am Prince daughters are making great females. Exposed to KWHF Diesel 303D from May 14 to August 10, 2017. Preg checked to calve approximately February 24, 2018.



DANIELLE 27T 3D

LOT **30**

Til-Toba *Dani* 5R 5D

Female PC03023253 WRAY 5D Mar 4, 2016

WSF CAN-AM PRINCE 143
DLF IEF HYF PC02965685

RVP STAR 533P CAN-AM ET 57U
THM 711 PRINCESS PRIME 8695 DLF IEF HYF

TIL-TOBA RALENE 28J 5R
PC02866278

SBS 57G RADAR 32K
TALECO 9615 LICORICE 28J

CE: -3.3 BW: 4.8 WW: 51.8 YW: 86.2 MM: 17.1 TM: 43.0

BW: 86 lbs.

5D has always been a favorite around here since she was born. She is out of a good old 5R Radar daughter. She is a short marked, deep bodied, thick heifer that will make a good cow. Exposed to KWHF Diesel 303D from May 14 to August 10, 2017. Preg checked to calve approximately March 1, 2018.



DANI 5R 5D

LOT **31**

Til-Toba *Dora* 729T 8D

Female PC03023262 WRAY 8D Mar 8, 2016

WSF CAN-AM PRINCE 143
DLF IEF HYF PC02965685

RVP STAR 533P CAN-AM ET 57U
THM 711 PRINCESS PRIME 8695 DLF IEF HYF

MHF 309N ETIQUENE 729T
PC02930229

MHF GOLD RUSH 552R
MHF MS ETIQUETTE A67

CE: -2.2 BW: 5.1 WW: 53.6 YW: 84.8 MM: 21.6 TM: 48.4

BW: 93 lbs.

Dora 8D is a very wide topped heifer with extra spring of rib. A full sister is working at Jackson Creek Polled Herefords and a maternal sister is at Thornbank Farms. Her mother is a very good cow we purchased from Malone Polled Herefords in Kansas. Exposed to KWHF Diesel 303D from May 14 to August 10, 2017. Preg checked to calve approximately February 24, 2018.



DORA 729T 8D

Til-Toba Polled Herefords

Debbie 81W 13D



LOT 32

Til-Toba *Debbie* 81W 13D

Female PC03023266 WRAY 13D Mar 13, 2016

GH ADAMS 179R STANLEY 180U
PC02911604

FE 17L STAN BRIT 179R
BLAIR-ATHOL LD GEENA 8P

GNF 4R GLORIA 81W
PC02933562

GNF 126J REBEL 4R
ROE 12H GLORIA 23K

CE: 2.1 BW: 3.6 WW: 42.0 YW: 76.3 MM: 18.5 TM: 39.5

BW: 87 lbs.

Debbie is the only Stanley daughter we have in the sale. She is a big framed, long bodied heifer that is loosely made and that moves out freely. A full sister is working at Thornbank Farms.

Exposed to KWHF Diesel 303D from May 14 to August 10, 2017.

Daisy 51X 18D



LOT 33

Til-Toba *Daisy* 51X 18D

Female PC03023269 WRAY 18D Mar 17, 2016

MOHICAN REDEEM 402B
PC03003100

KJ HVH 33N REDEEM 485T ET DLF IEF HYF
MOHICAN LUCKY LADY 107L

TIL-TOBA LONNY 17S 51X
PC02944386

CPH LAWMAN 9L
SRL MAVIS SPELL POWER 17S

CE: -2.4 BW: 5.1 WW: 54.7 YW: 90.2 MM: 20.0 TM: 47.4

BW: 91 lbs.

18D is a Redeem 402B daughter that has frame, length of body and lots of rib in her. Her mother, 51X, is a cow with a perfect udder and lots of milk.

Exposed to KWHF Diesel 303D from May 14 to August 10, 2017. Preg checked to calve approximately February 26, 2018.

Donna 15S 19D



LOT 34

Til-Toba *Donna* 15S 19D

Female PC03023255 WRAY 19D Mar 17, 2016

WSF CAN-AM PRINCE 143
DLF IEF HYF PC02965685

RVP STAR 533P CAN-AM ET 57U
THM 71I PRINCESS PRIME 8695 DLF IEF HYF

TIL-TOBA SANDY 10K 15S
PC02884589

CPH LAWMAN 9L
PBHR VANESSA 10K

CE: -4.0 BW: 6.7 WW: 54.2 YW: 92.5 MM: 15.2 TM: 43.3

BW: 100 lbs.

Donna 19D is a very structurally sound heifer that is dark red and short marked. Her dam is a granddaughter of the GHC Lawman bull. She is a cow that always brings in a good calf.

Exposed to KWHF Diesel 303D from May 14 to August 10, 2017. Preg checked to calve approximately March 28, 2018.



DAWN 24R 20D

BW: 80 lbs.
Dawn 20D is a very thick, deep bodied heifer that will make someone a great cow. Her mother, the 24R cow, is a big strong Marlborough daughter. A maternal brother is working for Malone Herefords in Kansas. Exposed to KWHF Diesel 303D from May 14 to August 10, 2017. Preg checked to calve approximately February 25, 2018.

LOT 35

Til-Toba *Dawn* 24R 20D

Female PC03023254 WRAY 20D Mar 18, 2016

MOHICAN REDEEM 402B
PC03003100

KJ HVH 33N REDEEM 485T ET DLF IEF HYF
MOHICAN LUCKY LADY 107L

TIL-TOBA MARLA 3M 24R
PC02866286

DTHF MARLBOROUGH 44M
TIL-TOBA PRINCESS 4K 3M

CE: 0.1 BW: 3.7 WW: 53.8 YW: 79.6 MM: 17.1 TM: 44.0

LOT 36

Til-Toba *Doreen* 16S 30D

Female PC03023256 WRAY 30D May 3, 2016

MOHICAN REDEEM 402B
PC03003100

KJ HVH 33N REDEEM 485T ET DLF IEF HYF
MOHICAN LUCKY LADY 107L

TIL-TOBA SUNSHINE 9N 16S
PC02884602

DTHF MARLBOROUGH 44M
TIL-TOBA RADIANT 38H 9N

CE: -0.4 BW: 4.5 WW: 62.2 YW: 87.9 MM: 19.5 TM: 50.6

BW: 90 lbs.
30D is the youngest heifer in our offering. Take a close look at this young May heifer. She is long bodied and deep ribbed. A full brother is working for DWT Polled Herefords, Isabella and a maternal sister was our high seller in 2015, selling to Casey Van Kessel and Bob Hess. Exposed to KWHF Diesel 303D from May 14 to August 10, 2017. Preg checked to calve approximately March 20, 2018.

DIESEL 303D



Ref

KWHF *Diesel* 303D DLF IEF HYF

Male PC03023642 KWHF 303D Jan 31, 2016

FLYER CATTLE FITCH 12A
DLF IEF HYF PC02981355

MSU TCF REVOLUTION 4R DLF IEF HYF
CLB ABERCROMBIE 20Y DLF IEF HYF

JC 15S SANDRA 35B
PC03004196

DXB 36N IMPRINT ET 45S
JC RANDA 15S

CE: -1.9 BW: 3.7 WW: 63.1 YW: 106.9 MM: 19.5 TM: 51.1



DOREEN 16S 30D

Joy 113B 11D



LOT 37

Roselawn Aywon *Joy 113B 11D*

Female PC03021699 AHK 11D Mar 1, 2016

BNC W18 EXCELSIOR 113B
DLF IEF HYF PC03004874

SHF WONDER M326 W18 ET DLF IEF HYF
BIRD'S-HILL PEARL 37U DLF IEF HYF

ROSELAWN PAYTON 10W 12A
PCC02985223

HAROLDSON'S TANK 45P 10W DLF IEF HYF
ROSELAWN MARINA 89W 34Y DLF IEF HYF

CE: 1.3 BW: 4.1 WW: 57.9 YW: 95.7 MM: 24.7 TM: 53.7

BW: 86 lbs.

This is a real eye catching Excelsior 113B daughter out of a good Tank 10W daughter we sold to Ross Madsen at the Agribition sale and leased back. These 113B daughters are going to make great cows. 11D is a good one so don't miss out on getting in on the ground floor.

AI bred on May 20, 2017 to MHPH 521X Action 106A. Pasture exposed to NJW 137X 10Y Loaded 61D ET from June 7 to August 10, 2017. Preg checked safe. Co-owned with Ross Madsen.

JAYCEE GC ET 2D



LOT 38

Roselawn *Jaycee GC ET 2D* DLF IEF HYF

Female PC03023789 AHK 2D Feb 25, 2016

H BK CCC SR GAME CHANGER ET
PC03009405

KJ HVH 33N REDEEM 485T ET DLF IEF HYF
NJW 78P 63N LADYSPORT 51W ET

ROSELAWN PIPER 154U 113X
DLF IEF HYF PC02939787

HARVIE OVHF WALK HARD 154U DLF IEF HYF
ROSELAWN VICTORIA 7H 85M

CE: -2.0 BW: 4.7 WW: 51.5 YW: 86.6 MM: 18.7 TM: 44.5

BW: 78 lbs.

One of the flush heifers out of Game Changer and the Walk Hard 113X cow. Full sisters are our show heifer 6D and Justin Carvey's show heifer 10D. Two sisters are retained for our herd and all three brothers made the bull pen.

Pasture exposed to NJW 137X 10Y Loaded 61D ET from May 27 to August 10, 2017. Observed bred on May 10, 2017. Preg checked safe to May 10 breeding date.

LOT 39

Roselawn *Rebecca* 8A 4D

Female PC03021581 AHK 4D Feb 25, 2016

HAROLDSON JVJ COVERT 425X 8A
DLF IEF HYF PC02981975

TH 89T 743 UNTAPPED 425X ET DLF IEF HYF
CIRCLE-D 137K MAE 49S

ROSELAWN HANNA 62Y 53B
PC02998669

BBSF 29W YAMAHA 62Y DLF IEF HYF
ROSELAWN RHENA 121R 22U DLF IEF HYF

CE: -0.2 BW: 4.5 WW: 51.7 YW: 88.9 MM: 20.7 TM: 46.6

BW: 85 lbs.

A goggle eyed Covert heifer out of a first calf Yamaha that brings in a top end heifer calf again this year.

AI bred on May 17, 2017 to MHPH 521X Action 106A. Pasture exposed to NJW 137X 10Y Loaded 61D ET from June 4 to August 10, 2017. Preg checked safe to AI date.



REBECCA 8A 4D

LOT 40

Roselawn *Shawna* 88A 39D

Female PC03023807 AHK 39D Mar 9, 2016

HAROLDSON'S INSPECTOR 120X 88A
DLF IEF HYF PC03005624

MHPH 40U INSPECTOR 120X DLF IEF HYF
HAROLDSON'S EMERALD T100 104W

ROSELAWN PAYTON 10W 20Z
PC02968716

HAROLDSON'S TANK 45P 10W DLF IEF HYF
ROSELAWN SCARLET 4G 13P DLF IEF HYF

CE: -1.0 BW: 7.8 WW: 57.8 YW: 98.3 MM: 17.4 TM: 46.3

BW: 98 lbs.

A good headed eye catching Inspector daughter out of a Tank 10W cow. I think she will make one hell of a cow.

AI bred on May 17, 2017 to MHPH 521X Action 106A. Pasture exposed to NJW 137X 10Y Loaded 61D ET from June 4 to August 10, 2017. Preg checked safe to AI date.



SHAWNA 88A 39D

LOT 41

Roselawn *Shauna* 88A 43D

Female PC03023808 AHK 43D Mar 7, 2016

HAROLDSON'S INSPECTOR 120X 88A
DLF IEF HYF PC03005624

MHPH 40U INSPECTOR 120X DLF IEF HYF
HAROLDSON'S EMERALD T100 104W

ROSELAWN BELL 107S 50W
DLF IEF HYF PC02927375

ROSELAWN MATAGO 82P 107S
ROSELAWN VICTORIA 7H 89M DLF IEF HYF

CE: -0.2 BW: 4.3 WW: 43.0 YW: 65.9 MM: 16.3 TM: 37.8

BW: 84 lbs.

A heifer that will come home from the pasture with a real good calf on her.

AI bred on May 15, 2017 to NJW 137X 10Y Loaded 61D ET. Pasture exposed to NJW 137X 10Y Loaded 61D ET from May 20 to August 10, 2017. Preg checked safe to AI date.



SHAUNA 88A 43D

Roselawn Polled Herefords

FANCY 21B 46D



LOT 42

Roselawn *Fancy* 21B 46D

Female PC03021712 AHK 46D Mar 10, 2016

HAROLDSON'S RHINO 48Y 21B
DLF IEF HYF PC02994768

HAROLDSONS WLC RHINO ET 48Y DLF IEF HYF
REMITALL MARVEL 190S

ANL CL 425X WESTWIND 45W 85B
PC02994194

TH 89T 743 UNTAPPED 425X ET DLF IEF HYF
MOHICAN WESTWIND 45W

CE: -2.1 BW: 4.0 WW: 51.0 YW: 88.8 MM: 18.6 TM: 44.1

BW: 80 lbs.

A nice moderate framed Rhino 21B out of an Untapped daughter. Lots of maternal here. Pasture exposed to NJW 137X 10Y Loaded 61D ET from May 20 to August 10, 2017. Preg checked safe.

BROOK 21B 56D



LOT 43

Roselawn E *Brook* 21B 56D

Female PC03023810 AHK 56D Mar 13, 2016

HAROLDSON'S RHINO 48Y 21B
DLF IEF HYF PC02994768

HAROLDSONS WLC RHINO ET 48Y DLF IEF HYF
REMITALL MARVEL 190S

ROSELAWN PIPER 154U 62B
PC02998674

HARVIE OVHF WALK HARD 154U DLF IEF HYF
ROSELAWN PAYTON 10W 66Z

CE: 0.1 BW: 2.9 WW: 56.9 YW: 91.5 MM: 24.1 TM: 52.6

BW: 78 lbs.

These Rhino 21B daughters with their femininity and broodiness are going to make outstanding cows. Her Walk Hard mother is a favorite around here as well.

AI bred on May 15, 2017 to MHPH 521X Action 106A. Pasture exposed to NJW 137X 10Y Loaded 61D ET from June 3 to August 10, 2017. Preg checked safe to calve late March.

Co-owned with Rae Mahaffey, Ontario.

SHAUNA 88A 66D



LOT 44

Roselawn *Shauna* 88A 66D

Female PC03023814 AHK 66D Mar 18, 2016

HAROLDSON'S INSPECTOR 120X 88A
DLF IEF HYF PC03005624

MHPH 40U INSPECTOR 120X DLF IEF HYF
HAROLDSON'S EMERALD T100 104W

ROSELAWN PIPER 154U 66A
PC02985557

HARVIE OVHF WALK HARD 154U DLF IEF HYF
ROSELAWN KARLI 82P 550T DLF IEF HYF

CE: 0.4 BW: 4.6 WW: 56.5 YW: 94.8 MM: 22.3 TM: 50.6

BW: 80 lbs.

A long spined Inspector x Walk Hard daughter that will milk her heart out. Don't let this one slip by.

Pasture exposed to NJW 137X 10Y Loaded 61D ET from May 20 to August 10, 2017. Preg checked safe.

Selling
Choice
of
Flush
Sisters



JAYCEE GC ET 11E

LOT 45A

Roselawn *Jaycee* GC ET 11E
Female Applied For AHK 11E Mar 2, 2017

BW: 90 lbs.

H BK CCC SR GAME CHANGER ET
PC03009405

KJ HVH 33N REDEEM 485T ET DLF IEF HYF
NJW 78P 63N LADYSPORT 51W ET

ROSELAWN PIPER 154U 25B
DLF IEF HYF PC03011409

HARVIE OVHF WALK HARD 154U DLF IEF HYF
ROSELAWN PAYTON 10W 42Y DLF IEF HYC

LOT 45B

Roselawn *Jaycee* GC ET 18E
Female Applied For AHK 18E Mar 5, 2017

BW: 92 lbs.

PE CE: -1.3 BW: 3.7 WW: 59.8 YW: 94.4 MM: 23.0 TM: 52.9

We are offering you pick of two flush sisters sired by Game Changer and the 25B Walk Hard x Tank donor cow. These calves are good headed, long spined and deep bodied. The udders and milk flow on the dam's side is exceptional. You pick one and we will gladly keep the other. Co-owned with Ross Madsen.



JAYCEE GC ET 18E

Loaded 61D



Ref

NJW 137X 10Y *Loaded* 61D ET DLF IEF HYF
 Male P43721697 61D Mar 2, 2016

NJW 73S W18 HOMETOWN 10Y ET
 DLF IEF HYF P43214853

SHF WONDER M326 W18 ET DLF IEF HYF
 NJW P606 72N DAYDREAM 73S DLF IEF HYF

NJW 67U 3027 VACA 137X
 DLF IEF HYF P43094474

UPS DOMINO 3027 DLF IEF HYF
 NJW 4037 80L FAITH 67U DLF IEF HYF

CE: 5.9 BW: 1.3 WW: 54 YW: 87 MM: 36 TM: 63

Loaded was our pick at the 2017 NJW Sale. We are very excited to see the calves off him next spring.
 Service sire to Lots 38, 41, 42 & 44

Game Changer ET



Ref

H BK CCC SR *Game Changer* ET
 Male PC03009405 2447 Mar 12, 2012

KJ HVH 33N REDEEM 485T ET
 DLF IEF HYF PC02989536

SHF RADAR M326 R125 DLF IEF HYF
 HVH OKSANA 4L 33N DLF IEF HYF

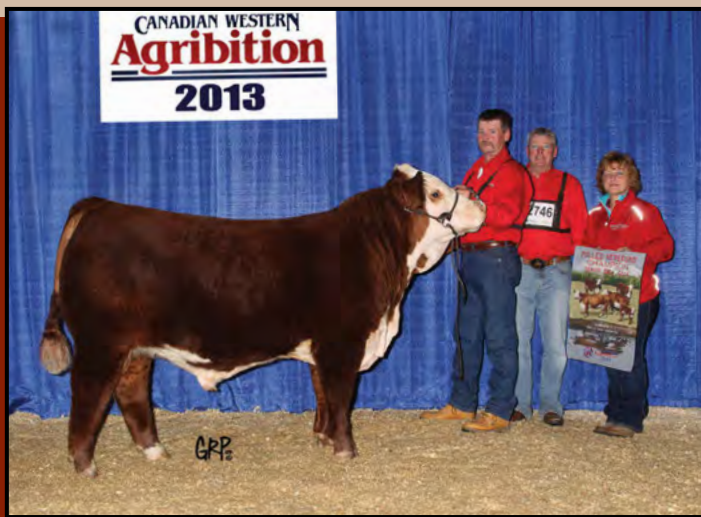
NJW 78P 63N LADYSPORT 51W ET
 PA43002919

TH JWR SOP 16G 57G TUNDRA 63N DLF IEF HYF
 NJW BW LADYSPORT DEW 78P ET DLF IEF HYF

CE: -4.9 BW: 5.4 WW: 61.4 YW: 102.0 MM: 18.5 TM: 49.2

Sire of Lots 38, 45A & 45B

Action 106A



Ref

MHPH 521X *Action* 106A DLF IEF HYF
 Male PC02982798 MHPH 106A Jan 6, 2013

TH 122 71I VICTOR 521X ET
 DLF IEF HYF PC02963602

DRF JWR PRINCE VICTOR 71I
 KBKR 19D DOMINETTE 122 DLF IEF

MHPH 301W DAINTY 205Y
 DLF IEF HYF PC02953894

MHPH 102S WYATT 301W DLF IEF HYF
 MHPH MS 101S DAINTY 123U DLF IEF HYF

CE: -0.8 BW: 3.6 WW: 66.2 YW: 105.7 MM: 23.2 TM: 56.3

Service Sire to Lots 37, 39, 40 & 43



SARAH 106A 5E

BW: 82 lbs.

This Action heifer calf is very complete made with a real nice look to her. She is a high performance female with excellent rib shape. Being out of the Sarah cow family only adds to her maternal value.

LOT 46

HAROLDSON'S Sarah 106A 5E
Female PC03036062 AFSY 5E Feb 3, 2017

MHPH 521X ACTION 106A
DLF IEF HYF PC02982798

TH 122 71I VICTOR 521X ET DLF IEF HYF
MHPH 301W DAINTY 205Y DLF IEF HYF

MHPH 226Y SARAH 107B
DLF IEF HYF PC02993872

MHPH 533P YUKON ET 226Y DLF IEF HYF
HAROLDSON'S SARAH 29R 92W DLF IEF HYF

PE CE: -1.6 BW: 3.3 WW: 53.6 YW: 87.9 MM: 22.5 TM: 49.3

LOT 47

HAROLDSON'S LV Ella 6964 12E
Female PC03036069 AFSY 12E Feb 6, 2017

R LEADER 6964
PC03025498

HYALITE ON TARGET 936
R MISS REVOLUTION 1009

HAROLDSON'S ELLA T100 37W
DLF IEF HYF PC02945200

SHF TAHOE R117 T100 DLF IEF HYF
HAROLDSON'S ELLA 122L 5N

PE CE: 4.0 BW: 1.9 WW: 58.6 YW: 104.5 MM: 21.9 TM: 51.2



ELLA 6964 12E

BW: 78 lbs.

This Leader daughter has cow power written all over her. She is long and extended with a big sweeping rib cage. She is a natural calf out of our Ella donor who is making a name as one of our top producers.

Haroldson's Polled Herefords

LASSIE 21C 37E



BW: 86 lbs.
This Renegade female looks good from all angles. She is stout made with nice centre body shape and has a nice look about her. Her mom is a donor and former CWA Senior Champion. Lassie 37E was Junior Heifer Calf Champion at the South East Field Day.

LOT 48

HAROLDSON'S WS *Lassie* 21C 37E
Female PC03036070 AFSY 37E Mar 7, 2017

HAROLDSON'S RENEGADE ET 21C
DLF IEF HYF PC03015392

HAROLDSON'S WLC RHINO ET 48Y DLF IEF HYF
HAROLDSON'S MARVEL 45P 5W DLF IEF HYF

HAROLDSON'S LASSIE 425X 22Z
DLF IEF HYF PC02968288

TH 89T 743 UNTAPPED 425X ET DLF IEF HYF
GHC MISS LASSIE 3L

PE CE: -0.5 BW: 3.5 WW: 47.6 YW: 78.2 MM: 19.6 TM: 43.4

LOT 49

HAROLDSON'S *Marvel* ET 56E
Female Applied For AFSY 56E Mar 14, 2017

R LEADER 6964
PC03025498

HYALITE ON TARGET 936
R MISS REVOLUTION 1009

HAROLDSON'S MARVEL 45P 5W
DLF IEF HYF PC02933799

NJW FHF 9710 TANK 45P DLF IEF HYF
REMITALL MARVEL 190S

PE CE: 1.1 BW: 2.4 WW: 52.9 YW: 90.2 MM: 28.4 TM: 54.8

MARVEL ET 56E



BW: 88 lbs.
You have to appreciate the hip, hind leg, and rib shape in this young Leader female. She has a great look and should be a tremendous yearling. This Marvel family is very potent, don't miss this one.



JESSICA 21C 86E

BW: 89 lbs.

This April heifer is a real sweetheart. She is very good looking as most of the Jessicas are. She is very straight in her lines and has a classy look about her. There is a lot of maternal strength in this pedigree.

LOT 50

Haroldson's *Jessica* 21C 86E

Female PC03037824 AFSY 86E Apr 1, 2017

HAROLDSON'S RENEGADE ET 21C
DLF IEF HYF PC03015392

HAROLDSON'S WLC RHINO ET 48Y DLF IEF HYF
HAROLDSON'S MARVEL 45P 5W DLF IEF HYF

HAROLDSON'S JESSICA ET 30A
DLF IEF HYF PC02990079

TH 89T 743 UNTAPPED 425X ET DLF IEF HYF
TL 5073 JESSICA 751U DLF IEF HYF

PE CE: -1.3 BW: 3.1 WW: 50.8 YW: 84.5 MM: 21.9 TM: 47.3

LOT 51

Haroldson's SCC *Lassie* 21E

Female PC03037823 AFSY 21E Feb 18, 2017

R LEADER 6964
PC03025498

HYALITE ON TARGET 936
R MISS REVOLUTION 1009

HAROLDSON'S WSF LASSIE 48Y 42C
PC03015069

HAROLDSON'S WLC RHINO ET 48Y DLF IEF HYF
HAROLDSON'S LASSIE 425X 22Z DLF IEF HYF

PE CE: 3.1 BW: 2.3 WW: 57.2 YW: 100.4 MM: 20.5 TM: 49.1



LASSIE 21E

BW: 79 lbs.

Lassie is a very fault free female that has a big future. She is very extended and correct through her front end. She is out of a first calf Rhino that has an amazing udder and milk flow. I feel this female will be a tremendous yearling.

MARVEL 48Y 12B



LOT 52

3 Embryos (NON EXPORTABLE)

Haroldson's Totem 200Z 5D x Haroldson's HLV Marvel 48Y 12B

HAROLDSON'S TOTEM 200Z 5D CHURCHILL RED BULL 200Z DLF HYF IEF
DLF IEF HYF PC03023245 BLAIR'S NELLIE R117 ET 5B DLF HYF IEF

HAROLDSON'S HLV MARVEL 48Y 12B
PC02994761

HAROLDSON'S WLC RHINO ET 48Y DLF IEF HYF
HAROLDSON'S MARVEL 45P 5W DLF IEF HYF

PE CE: 0.2 BW: 2.2 WW: 52.4 YW: 87.0 MM: 25.5 TM: 51.8

Here is an opportunity to grab a hold of our freshest genetics. We love our Rhino females and Marvel will be our new lead donor. This is our most anticipated mating for 2018. Marvel 48Y 12B is the dam of Lots 56-58 in this sale.

Selling three (3) grade A embryos. Guaranteeing one pregnancy if implanted by a certified technician.



TOTEM 200Z 5D



MARVEL ET 57E

BW: 89 lbs.

This one will stop you in your tracks with her exceptional phenotype. She is long and extended with that "look at me" front end. She has excellent structure and tremendous shape to her quarter and rib. Her mom and grandmother are two of our top donors. Look at their influence in this sale. Big time potential here.

LOT 53

HAROLDSON'S *Marvel* ET 57E

Female Applied For AFSY 57E Mar 15, 2017

R LEADER 6964
PC03025498

HYALITE ON TARGET 936
R MISS REVOLUTION 1009

HAROLDSON'S HLV MARVEL 48Y 12B
PC02994761

HAROLDSONS WLC RHINO ET 48Y DLF IEF HYF
HAROLDSON'S MARVEL 45P 5W DLF IEF HYF

LOT 54

HAROLDSON'S *Marvel* ET 58E

Female Applied For AFSY 58E Mar 15, 2017

PE CE: 2.2 BW: 2.0 WW: 56.4 YW: 98.4 MM: 24.2 TM: 52.3



MARVEL ET 58E

BW: 80 lbs.

This female is full of mass and power. She is stout, huge bodied, deep flanked and has that extra base width. These Marvels are really hard to part with. This female is definitely the money making kind.

Haroldson's Polled Herefords

MARVEL 200Z 1D



BW: 84 lbs.
Marvel 1D is the natural calf out of our lead donor 12B. Great numbered, great looking, and great cosmetics. Definitely a future donor and money maker. AI bred to R Leader 6964 on May 18, 2017.

LOT 55

HAROLDSON'S SCC *Marvel* 200Z 1D
Female PC03023244 AFSY 1D Feb 1, 2016

CHURCHILL RED BULL 200Z
DLF IEF HYF PC03003015

CHURCHILL SENSATION 028X DLF IEF HYF
CHURCHILL LADY 002X ET

HAROLDSON'S HLV MARVEL 48Y 12B
PC02994761

HAROLDSON'S WLC RHINO ET 48Y DLF IEF HYF
HAROLDSON'S MARVEL 45P 5W DLF IEF HYF

CE: 3.8 BW: 0.1 WW: 51.9 YW: 86.9 MM: 28.0 TM: 54.0

LOT 56

HAROLDSON'S *Tory* 704X 73D
Female PC03024621 AFSY 73D Mar 19, 2016

AXA GOLDEN-OAK XCEED ET 704X
DLF IEF HYF PC02943387

SHF RIB EYE M326 R117 DLF IEF HYF
NCX MISS JR NELLIE 528N

FBFJ 5Y TORY 50A
PC02997551

FBF 55S YODA 5Y DLF IEF HYF
FBFJ 49T TORY 34W

CE: 0.0 BW: 5.0 WW: 61.1 YW: 102.5 MM: 21.7 TM: 52.3

Tory 704X 73D



BW: 98 lbs.
This female will grab your attention from all angles. She is stout, big barreled with a lot of cow power. Definitely the herd building kind. A lot of pigmentation in this cow family.
Bred to Haroldson's Red Zone on April 26, 2017. Red Zone is a homo polled Hard Rock son.



ELLA 2447 ET 27D

BW: 88 lbs.
 This Ella daughter will be a herd bull maker. She is stout made and huge barreled.
 AI bred to Haroldson's Totem 200Z 5D on May 31, 2017. Exposed to Haroldson's WLC Reno 15W from June 22 to August 1, 2017.

LOT 57 HAROLDSON'S *Ella* 2447 ET 27D DLF IEF HYF
 Female PC03029630 AFSY 27D Feb 27, 2016

H BK CCC SR GAME CHANGER ET
 PC03009405

KJ HVH 33N REDEEM 485T ET DLFIEFHVF
 NJW 78P 63N LADYSPORT 51W ET

HAROLDSON'S ELLA T100 37W
 DLF IEF HYF PC02945200

SHF TAHOE R117 T100 DLF IEF HYF
 HAROLDSON'S ELLA 122L 5N

CE: -1.4 BW: 4.1 WW: 58.8 YW: 102.4 MM: 18.4 TM: 47.8

LOT 58 HAROLDSON'S HLV *Marvel* 38B 82D
 Female PC03027757 AFSY 82D Mar 24, 2016

HAROLDSON'S APOTHIC 521X 38B
 PC02994775

TH 122 71I VICTOR 521X ET DLF IEF HYF
 HAROLDSON'S DEENA 4T 44W

HAROLDSON'S MARVEL 45P 5W
 DLF IEF HYF PC02933799

NJW FHF 9710 TANK 45P DLF IEF HYF
 REMITALL MARVEL 190S

CE: 0.7 BW: 3.3 WW: 50.1 YW: 79.2 MM: 26.0 TM: 51.1



MARVEL 38B 82D

BW: 94 lbs.
 This Marvel daughter is the cattleman's kind. She is big bodied, easy doing and sports a very sound structure. Natural daughter of 5W and half sister to Renegade and our Marvel 12B donor.
 AI bred to Haroldson's Totem 200Z 5D on April 30, 2017.

Haroldson's Polled Herefords

Jessica 38B 47D



LOT 59

HAROLDSON'S Ad *Jessica* 38B 47D
Female PC03027759 AFSY 47D Mar 8, 2016

HAROLDSON'S APOTHIC 521X 38B
PC02994775

TH 122 711 VICTOR 521X ET DLF IEF HYF
HAROLDSON'S DEENA 4T 44W

HAROLDSON'S JESSICA ET 71A
DLF IEF HYF PC02989529

HAROLDSON'S WLL ANCHOR 4T
TL 5073 JESSICA 751U DLF IEF HYF

CE: 1.4 BW: 2.9 WW: 55.1 YW: 89.5 MM: 20.1 TM: 47.7

BW: 84 lbs.

This Jessica female is very well patterned and fault free. Her full brother was Reserve Senior Champion Bull Calf last year, behind Totem at CWA. The Jessica females are highly productive.

AI bred Haroldson's Totem 200Z 5D on June 10, 2017. Exposed to Haroldson's WLC Reno 15W from July 2 to August 1, 2017.

Boomer 15W 62D



LOT 60

HAROLDSON'S Ms *Boomer* 15W 62D
Female PC03037820 AFSY 62D Mar 15, 2016

HAROLDSON'S WLC RENO ET 15W
DLF IEF HYF PC02948654

HARVIE RAFTSMAN 16R DLF IEF HYF
HAROLDSON'S 37H MIRA ET 62K

HAROLDSON'S MS BOOMER 41Y 87B
PC02994788

HAROLDSON'S WLC MOTIVE ET 41Y DLF IEF HYF
H MISS BOOMER 9082 5111 ET

PE CE: 1.3 BW: 1.6 WW: 50.1 YW: 84.2 MM: 18.8 TM: 43.9

BW: 78 lbs.

Very complete made Reno daughter.

Exposed to Haroldson's Insight ET 201D from June 15 to August 1, 2017.

Lassie 48Y 60D



LOT 61

HAROLDSON'S JVJ *Lassie* 48Y 60D
Female PC03024619 AFSY 60D Mar 14, 2016

HAROLDSON'S WLC RHINO ET 48Y
DLF IEF HYF PC02960238

SHF TAHOE R117 T100 DLF IEF HYF
HAROLDSON'S 37H MIRA ET 62K

HAROLDSON'S LASSIE 13P 46T
PC02914289

REMITALL PATRIOT ET 13P
LRL LASSIE 4J 121M

CE: -1.2 BW: 2.0 WW: 48.7 YW: 81.6 MM: 14.7 TM: 39.1

BW: 82 lbs.

Here is a complete made Rhino daughter. Our Rhino daughters are making tremendous females in production.

Exposed to Haroldson's WLC Reno ET 15W from June 1 to August 1, 2017.

LOT 62

HAROLDSON'S *Pearl* 521X 46D

Female PC03024615 AFSY 46D Mar 8, 2016

TH 122 711 VICTOR 521X ET
DLF IEF HYF PC02963602

DRF JWR PRINCE VICTOR 711
KBCR 19D DOMINETTE 122 DLF IEF

HAROLDSONS WTK PEARL T100 22A
PC02981983

SHF TAHOE R117 T100 DLF IEF HYF
HAROLDSON'S PEARL 2Z ET 29U

CE: 0.6 BW: 4.6 WW: 67.0 YW: 106.3 MM: 22.3 TM: 55.8

BW: 90 lbs.

These 521X daughters are very efficient cows with nice udders and milk flow. 46D is a very fault free female with ample rib and dimension.

AI bred Haroldson's Totem 200Z 5D on June 10, 2017. Exposed to Haroldson's WLC Reno ET 15W from July 2 to August 1, 2017.



PEARL 521X 46D

LOT 63

HAROLDSON'S *Miss Lakes* 48Y 71D

Female PC03037821 AFSY 71D Mar 18, 2016

HAROLDSONS WLC RHINO ET 48Y
DLF IEF HYF PC02960238

SHF TAHOE R117 T100 DLF IEF HYF
HAROLDSON'S 37H MIRA ET 62K

HAROLDSONS MISS LAKES 41U 91Y
PC02961887

HAROLDSON'S UNIVERSAL 236G 41U DLF IEF HYF
LRL MISS LAKES 50K 57M

PE CE: -1.0 BW: 3.6 WW: 49.2 YW: 83.1 MM: 15.9 TM: 40.5

BW: 90 lbs.

Here is another Rhino daughter that is big bodied and will be a great producer.

AI bred to Haroldson's Totem 200Z 5D on May 30, 2017. Exposed to Haroldson's WLC Reno ET 15W from June 22 to August 1, 2017.



LAKES 48Y 71D

LOT 64

HAROLDSON'S *Mira* 15W 76D

Female PC03037817 AFSY 76D Mar 20, 2016

HAROLDSON'S WLC RENO ET 15W
DLF IEF HYF PC02948654

HARVIE RAFTSMAN 16R DLF IEF HYF
HAROLDSON'S 37H MIRA ET 62K

HAROLDSON'S WLC MIRA ET 50B
DLF IEF HYF PC03004593

BOYD MASTERPIECE 0220
HAROLDSON'S 37H MIRA ET 62K

PE CE: 0.1 BW: 2.2 WW: 53.4 YW: 92.9 MM: 19.0 TM: 45.8

BW: 77 lbs.

This double bred Mira daughter is dark and short marked with a very feminine look.

AI bred to Haroldson's Totem 200Z 5D on May 30, 2017. Exposed to Haroldson's WLC Reno ET 15W from June 22 to August 1, 2017.



MIRA 15W 76D

Haroldson's Polled Herefords

TOTEM 200Z 5D



Ref

Haroldson's *Totem* 200Z 5D DLF IEF HYF
Male PC03023245 AFSY 5D Feb 9, 2016

CHURCHILL RED BULL 200Z
DLF IEF HYF PC03003015

CHURCHILL SENSATION 028X DLF IEF HYF
CHURCHILL LADY 002X ET

BLAIR'S NELLIE R117 ET 5B
DLF IEF HYF PC03002463

SHF RIB EYE M326 R117 DLF IEF HYF
NCX MISS JR NELLIE 528N

CE: 1.9 BW: 1.3 WW: 53.6 YW: 89.2 MM: 27.9 TM: 54.7

Sire of Lot 52
Service Sire of Lots 57-59 & 62-64

RHINO ET 48Y



Ref

Haroldson's WLC *Rhino* ET 48Y DLF IEF HYF
Male PC02960238 AFSY 48Y Mar 26, 2011

SHF TAHOE R117 T100
DLF IEF HYF PC02933797

SHF RIB EYE M326 R117 DLF IEF HYF
SHF LADY 512 L73

HAROLDSON'S 37H MIRA ET 62K
PC02777365

REMITALL HOLLYWOOD 37H
HAROLDSON'S CU DESTINY 2Z 19G

CE: -0.7 BW: 2.1 WW: 58.7 YW: 101.4 MM: 16.7 TM: 46.1

Sire of Lots 61 & 63

Ref

Haroldson's WLC *Reno* 15W DLF IEF HYF
Male PC02948654 AFSY 15W Mar 1, 2009

HARVIE RAFTSMAN 16R
DLF IEF HYF PC02865314

HARVIE LADIES MAN 4L DLF IEF HYF
HARVIE MISS FIREFLY 51F DLF IEF HYF

HAROLDSON'S 37H MIRA ET 62K
PC02777365

REMITALL HOLLYWOOD 37H
HAROLDSON'S CU DESTINY 2Z 19G

CE: 3.3 BW: 0.3 WW: 51.8 YW: 88.8 MM: 16.7 TM: 42.6

Sire of Lot 60 & 64
Service sire of Lots 59, 61 & 62-64



RENO 15W

Ref

R *Leader* 6964
Male PC03025498 6964 May 1, 2014

HYALITE ON TARGET 936
P42986803

SCHU-LAR ON TARGET 22S
HYALITE TS LASS 310

R MISS REVOLUTION 1009
P43011690

MSU TCF REVOLUTION 4R DLF HYF IEF
R MISS WRANGLER 3007

CE: 5.8 BW: 0.9 WW: 61.6 YW: 111.9 MM: 25.1 TM: 55.9

Sire of Lots 47, 49, 51, 53 & 54

Service sire of Lot 55



LEADER 6964

TERMS:

The terms of the sale are cash or cheque, payable at par at the sale location. The right of property shall not pass until after settlement has been made; no invoicing on buyers in attendance unless previous arrangements have been made. Every animal sells to the highest bidder and in cases of disputes, the auctioneer's decision will be final. Announcements from the auction block will take precedence over the printed matter in the catalogue. Current exchange rates will be announced sale day. All monies are in Canadian funds.

CERTIFICATE OF REGISTRATION:

Each animal will carry papers issued by the Canadian Hereford Association. A certificate of registry duly transferred will be furnished to the buyer for each animal after payment has been made.

HEALTH:

All animals in the sale have met all necessary health requirements.

GUARANTEE:

Each animal becomes the purchaser's risk immediately after the animal is sold. All animals in this sale will be sold under the terms and guarantees set forth by the Canadian Hereford Association with regard to health, freedom from defects and from both reproductive and specific genetic unsoundness.

PREGNANCY INFORMATION:

All serviceable age females have been pregnancy examined by an accredited veterinarian, giving an estimated length of gestation. This estimated gestation period shall be used only as a guideline to calving and is not a guarantee of actual service.

EXPORT

Purchases going to the United States will be delivered at cost.

LIABILITIES:

All persons attend the sale at their own risk. The seller, facility owner and sale manager assume no liability legal or otherwise, for any accidents that occur. It is understood that T Bar C Cattle Co. Ltd. is acting only as a medium between buyer and seller and is not responsible for any failure on the part of either party to live up to his obligations. Neither does T Bar C Cattle Co. Ltd. assume any financial obligations to collect or enforce collection of any monies between parties and any legal action that may in exceptional cases be taken must be between the buyer and the seller. T Bar C Cattle Co. Ltd. assumes no responsibility for any credit extended by the seller to the buyer. The buyer must look to the seller for fulfillment of all guarantees and representations made hereunder.

DELIVERY:

Assistance will be given in getting your purchases home. Each animal becomes the risk of the purchaser as soon as sold.

PHONE, MAIL, WIRE BIDS:

Bidders unable to attend the sale may phone, wire or mail their bids and instructions to the sale manager, auctioneer or special representatives. Bids must be received in sufficient time prior to the sale.

INSURANCE:

We strongly recommend that insurance is purchased for full value.

ERRORS:

All announcements at sale time, written or oral, supercede any written material in the catalogue.

Return Undeliverable
Canadian Addresses To:

T Bar C Cattle Co. Ltd.
PO Box 2330
Warman, SK S0K 4S0



Christin and Kylee winning Showmanship
Bonanza 2017



Blair Athol 7B Marvel 20D
Grand Champion Hereford Female Young Ranchman's All Breed Show
1/2 interest sold in the Blair Athol/Haroldson's sale to Rae Mahaffy, ON



Blair Athol 97B Chickadee 131D
Reserve Champion Hereford Female Young Ranchman's All Breed
Show. Shown by Kylee Dixon.



Blair Athol 60 Zambooka 128D
Red Coat Classic \$10,000 pick for Cassandra Gorrill,
Lindsay Ontario



Blair-Athol 7B Marvel 20D
Agribition Class Winner
Owned with Rae Mahaffy, St. Mary's Ontario



Haroldsons SCC Madonna 95D
Reserve Junior Heifer Calf Champion at Agribition
Owned with Starry Cattle Co. and MJT Cattle Co.



Haroldson's Upgrade T100 33D
Junior Bull Calf Champion at Agribition
Owned with Baumgarten Cattle Co. & Lodoen Cattle Co., ND



Haroldson's Apothic ET 26D
Reserve Champion Senior Bull Calf at Agribition
Owned with HLV



Haroldson's Totem 200Z 5D
Champion Senior Bull Calf at Agribition
Owned with Medonte Highlands Polled Herefords &
NCX Polled Herefords